

# 26-FF-226

EXPLANATORY PLAN OF ACCESS EASEMENT ON  
LOTS 1 and 2, PLAN 32594, DISTRICT LOT 753,  
CARIBOO DISTRICT.

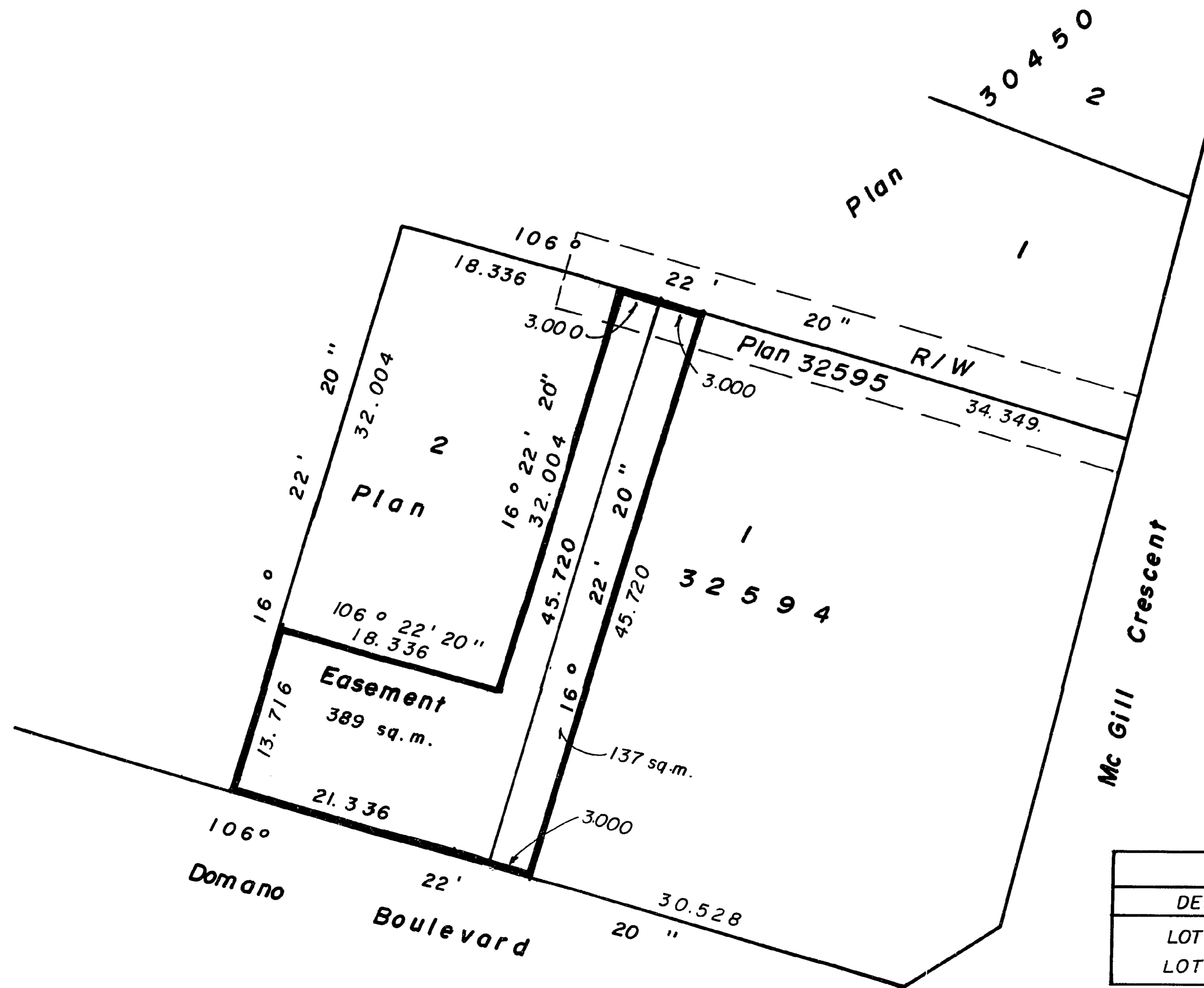
SCALE: 1:500 (DISTANCES ARE IN METRES)



PLAN NO. 32711

Deposited in the Land Title Office at  
Prince George this 31 day of Dec  
1987.

*W.B. Bandy*  
Registrar



Certified Correct  
this 8 day of December, 1987.

*Gordon Kilbride*  
G. Kilbride, B.C.L.S.

This plan lies within the Fraser Fort George  
Regional District.

BOOK OF REFERENCE	
DESCRIPTION	AREA
LOT 1, Plan 32594	137 sq. m.
LOT 2, Plan 32594	389 sq. m.

McWilliam, Whyte, Goble, & Associates,  
B.C. Land Surveyors,  
Prince George (604) 562-1196  
Kamloops-Smithers - Salmon Arm.

REF NO. 87196-1