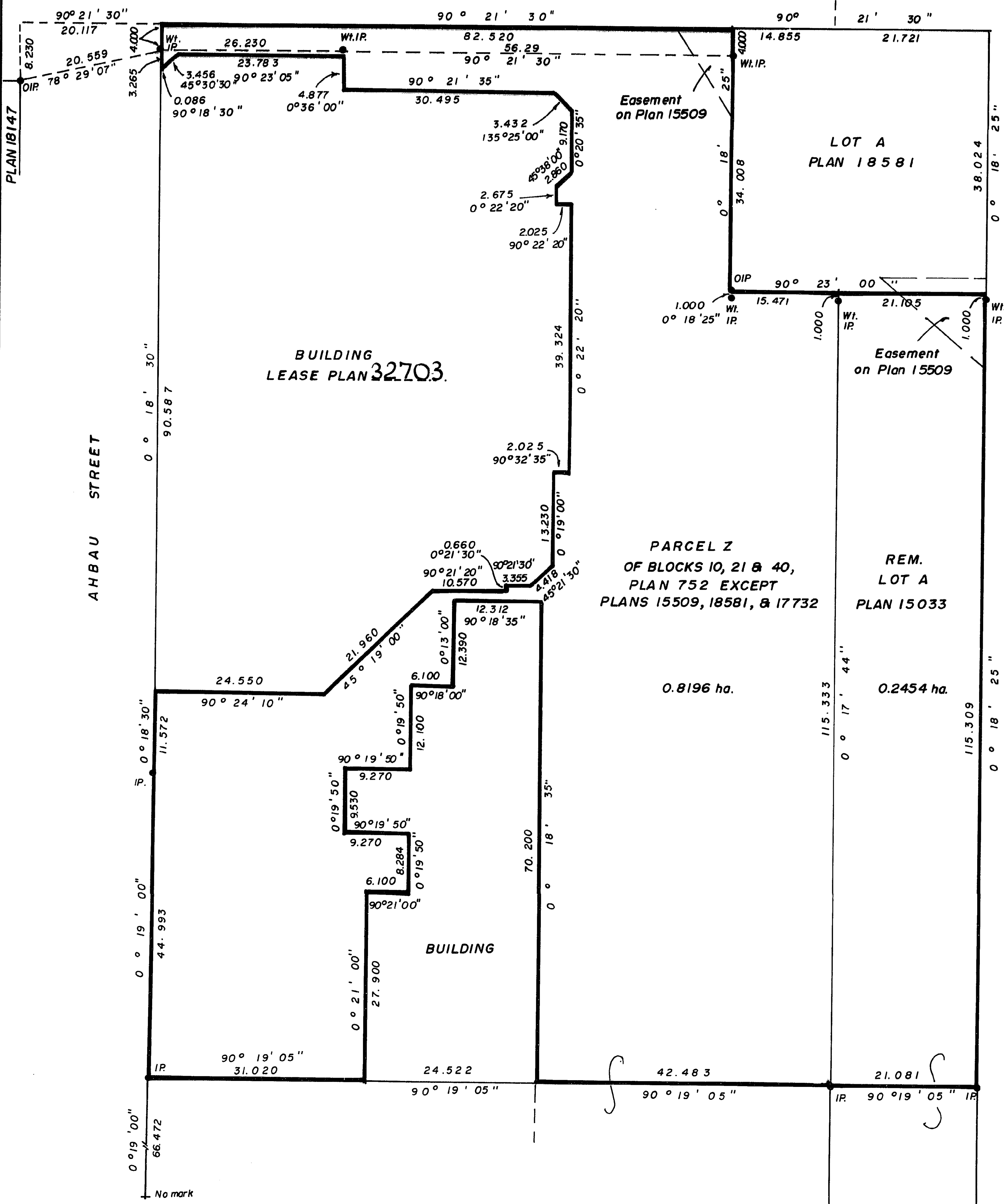


26-FF-226

BLOCK 51 PLAN KELLY ST. 752 BLOCK 52

PLAN NO. 32704
 Deposited in the Land Title Office at Prince George this 30 day of Dec 1987.

W. G. Grady
 Registrar



REFERENCE PLAN OF EASEMENT IN PARCEL Z OF BLOCKS 10, 21 and 40 OF PLAN 752 EXCEPT PLANS 15509, 18581 AND 17732 AND IN REM. LOT A, PLAN 15033, DISTRICT LOT 937, CARIBOO DISTRICT.
 SCALE : 1 : 500 (DISTANCES ARE IN METRES)



Bearings are astronomic derived from Plan 15033.

- IP..... Standard Iron Post.
- ⊙ PCon..... Standard Post in Concrete.
- Denotes old.
- Wt..... Denotes witness.

I, V. Bartell, a British Columbia Land Surveyor of Prince George, in British Columbia, certify that I was present at and personally superintended the survey represented by this plan, and that the survey and plan are correct. The survey was completed on the 15th day of December, 1987.

V. Bartell
 V. Bartell, B.C.L.S.

This plan lies within the Fraser Fort George Regional District

Book of Reference	
Description	Area
Pcl. Z of Blks. 10, 21 & 40, Plan 752 except Plans 15509, 18581 & 17732.	0.8196 ha.
Rem. Lot A, Plan 15033	0.2454 ha.

McWilliam, Whyte, Goble & Associates,
 B.C. Land Surveyors,
 Prince George - (604) 562-1196
 Kamloops - Smithers - Salmon Arm.
 REF. NO. 87329

N 24. 12. 87