

26-FF-226

PLAN NO 32703

Deposited in the Land Title Office at Prince George this 30 day of Dec 1987

W. Bartell Registrar

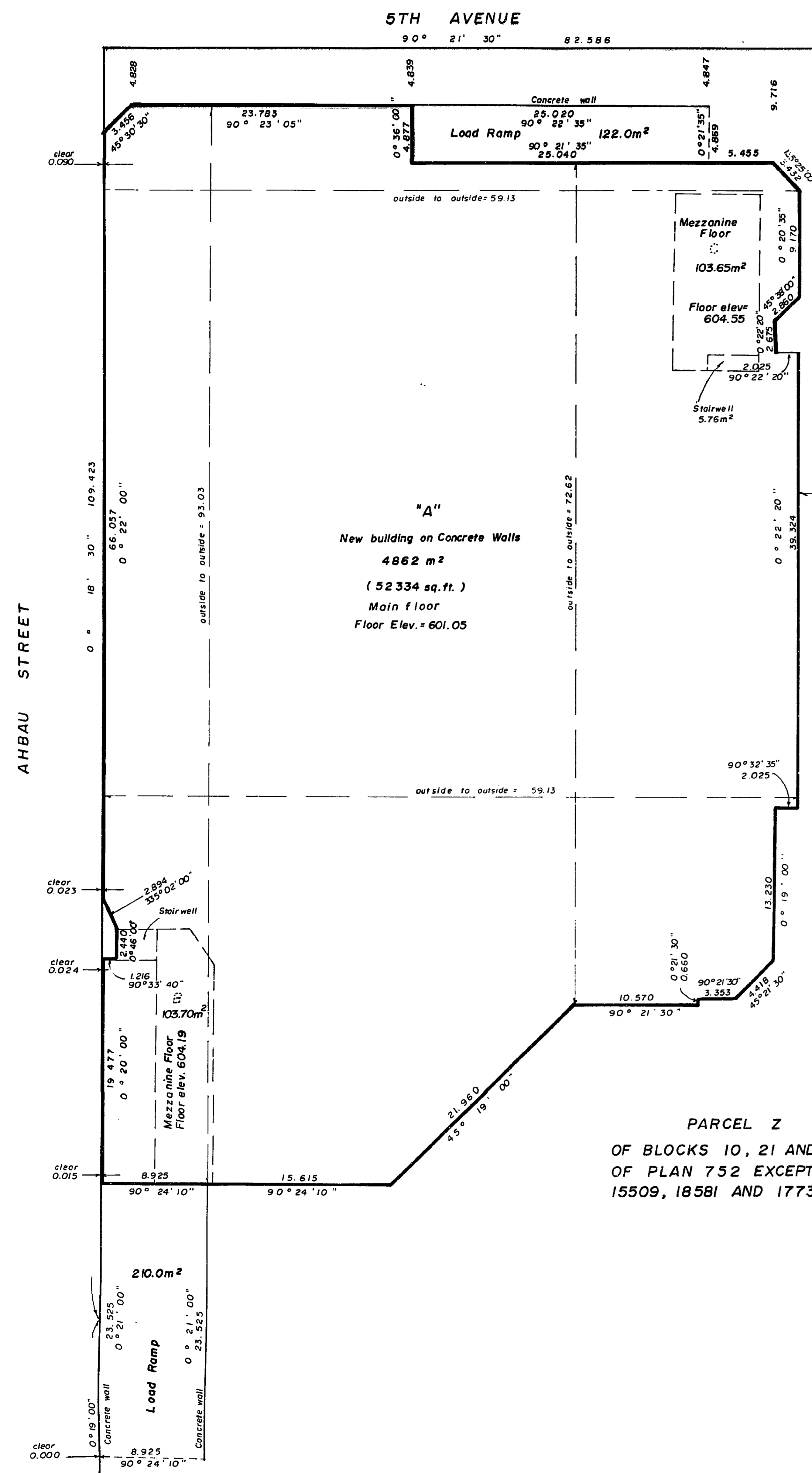
EXPLANATORY PLAN OF LEASEHOLDS ON BUILDING SITUATE ON PARCEL Z OF BLOCKS 10, 21 and 40, PLAN 752, EXCEPT PLANS 15509, 18581 and 17732, DISTRICT LOT 937, CARIBOO DISTRICT.

SCALE: 1: 250 (DISTANCES ARE IN METRES)

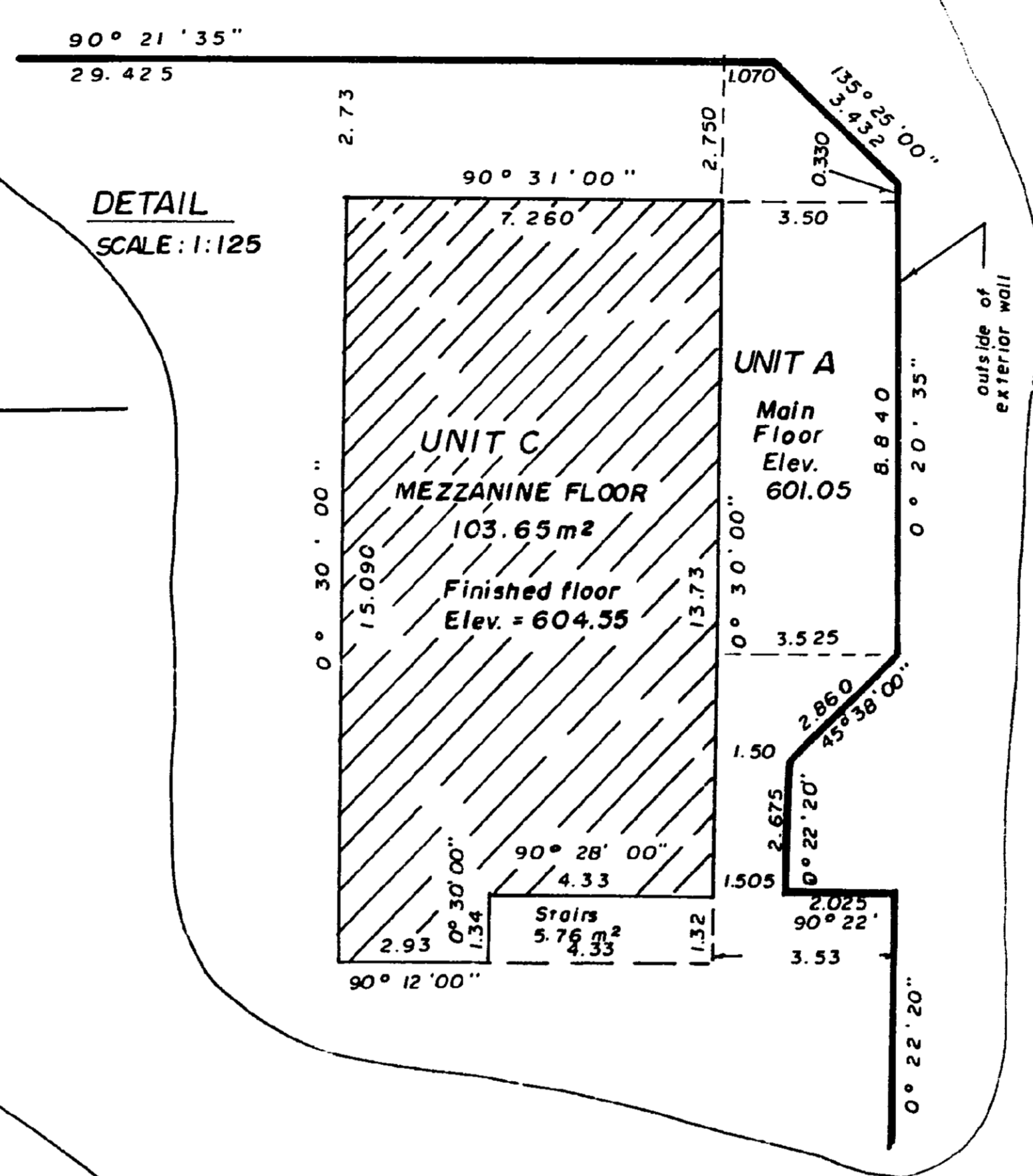


Note: Mezzanine Floors shown hatched.

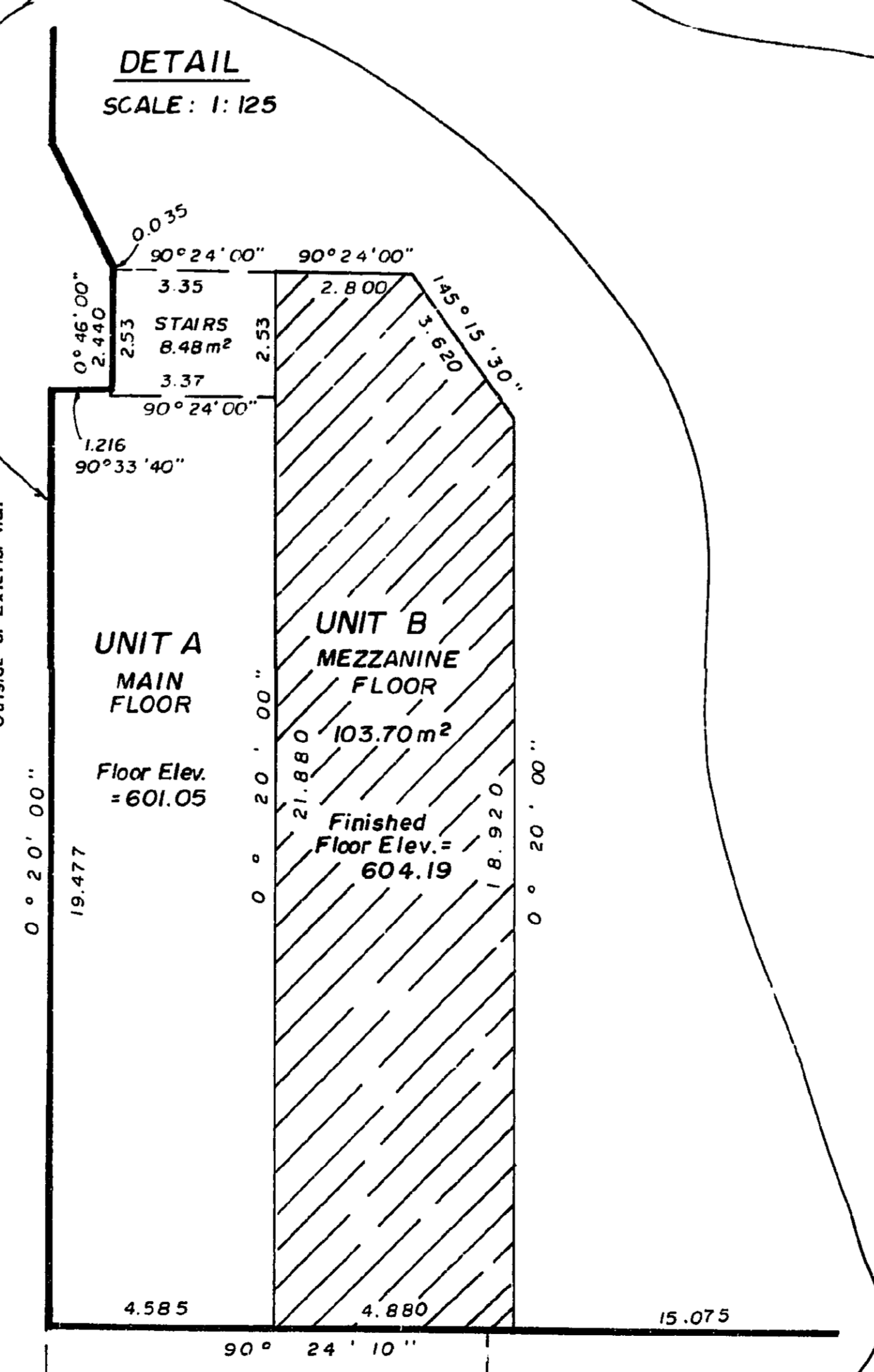
This plan lies within the Fraser Fort George Regional District.



A PLAN 18581

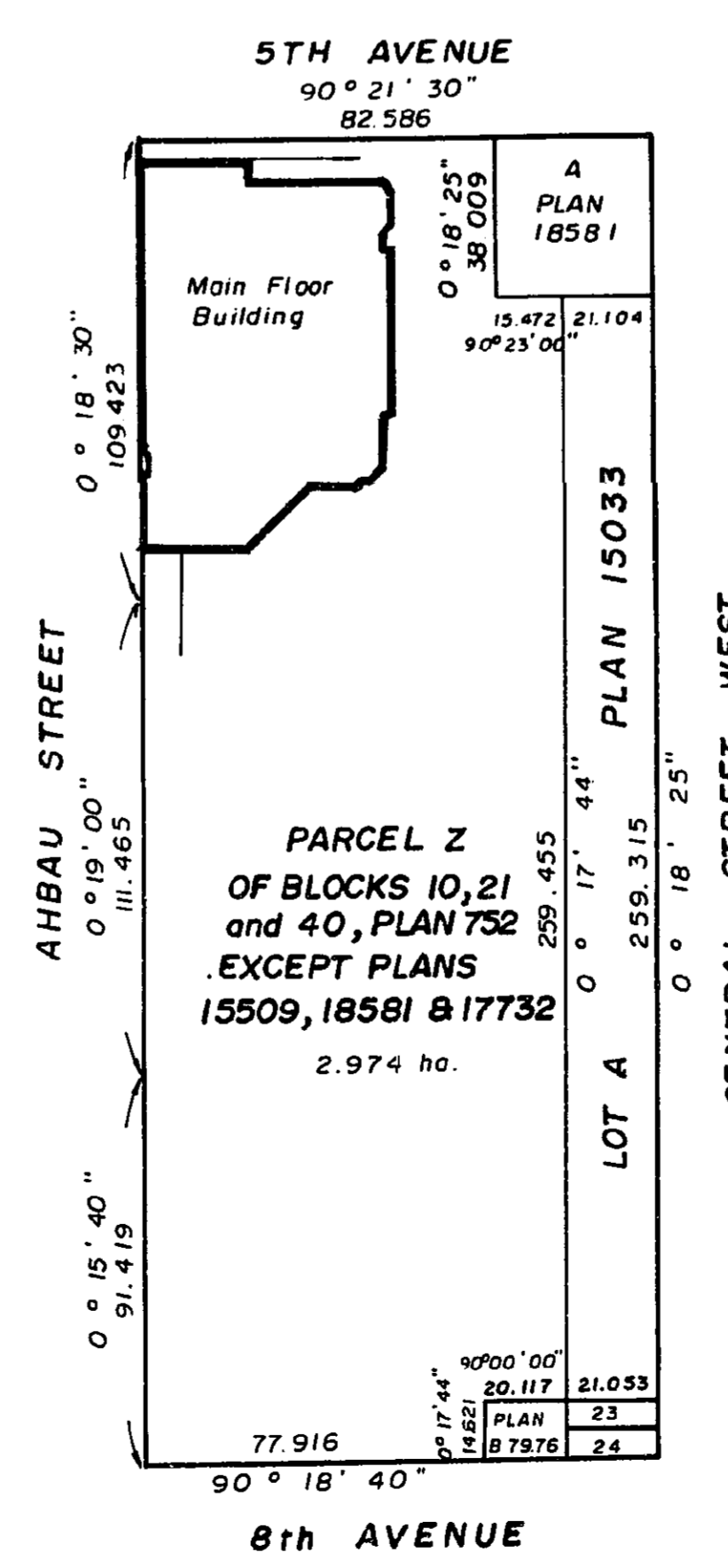


DETAIL SCALE: 1: 125



DETAIL SCALE: 1: 125

KEY PLAN SCALE: 1: 2000



PARCEL Z OF BLOCKS 10, 21 AND 40 OF PLAN 752 EXCEPT PLANS 15509, 18581 AND 17732.

CERTIFIED CORRECT according to L.T.O. Records on Plans 15509, 18581 and 17732, this 2 day of November, 1985

V. Bartell, B.C.L.S.

McWilliam, Whyte, Goble & Associates, B.C. Land Surveyors, Prince George - Kamloops - Smithers - Salmon Arm. REF. NO. 85081