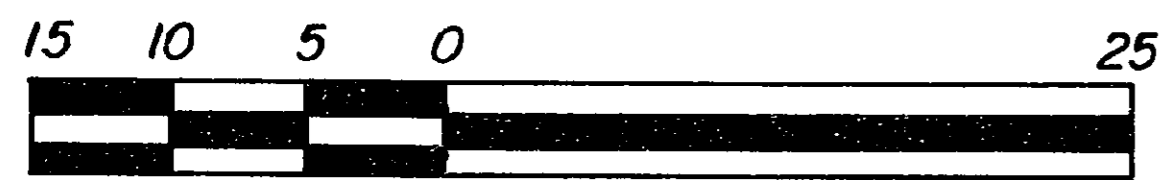


# REFERENCE PLAN OF STATUTORY RIGHT OF WAY THROUGH LOT 27 D. L. 913 CARIBOO DISTRICT PLAN 16511

PLAN 32694

Deposited in the Land Title Office  
at Prince George, B.C. this 21<sup>st</sup>  
day of December 1987



SCALE 1:500 metres.

W. B. Gandy 10m  
REGISTRAR

## LEGEND

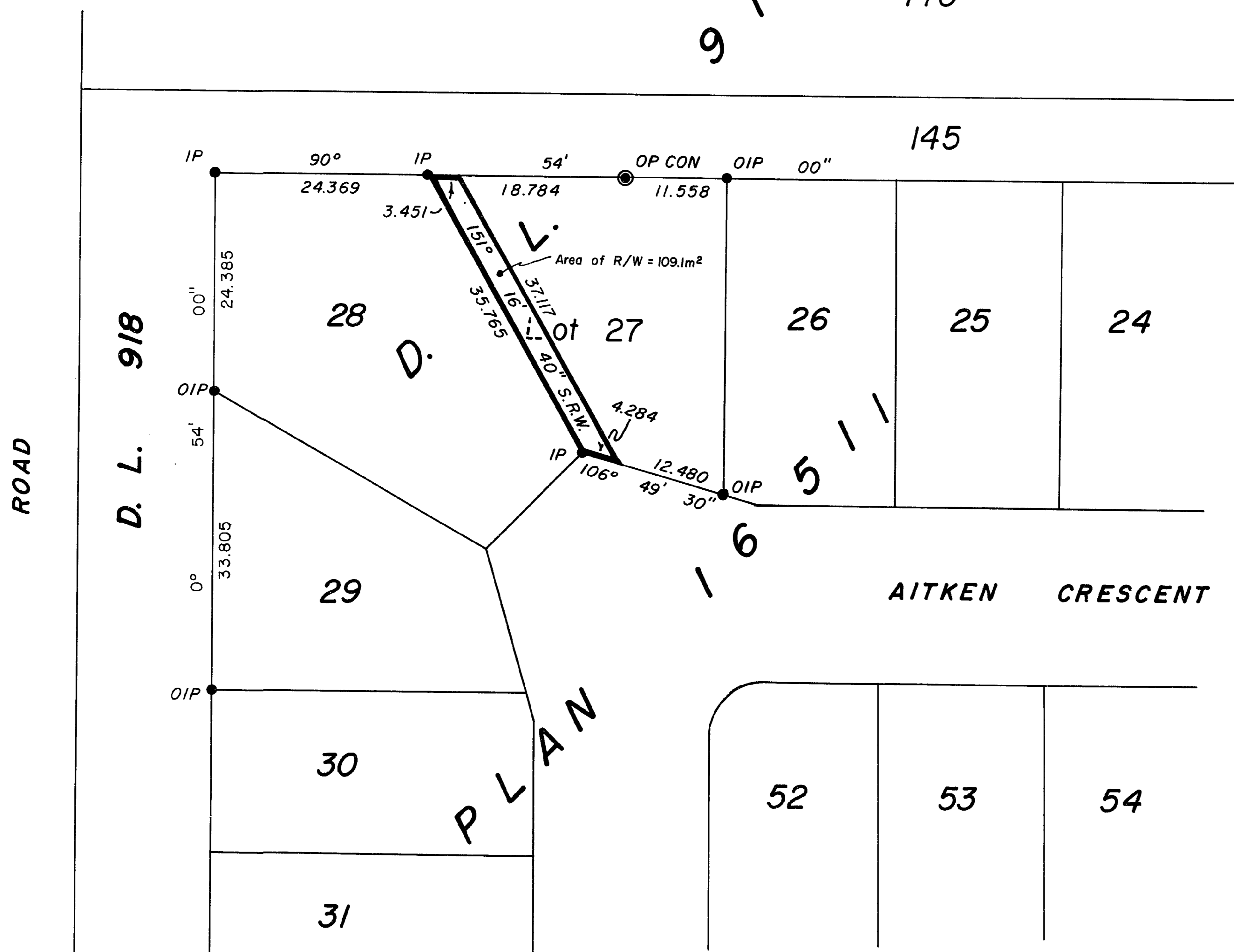
Bearings are astronomic, derived from Plan 16511 (90°54'00")

- OP CON Denotes old concrete post found
- OIP Denotes old iron post found
- IP Denotes iron post set

All distances are in metres.

BOOK OF REFERENCE	
DESCRIPTION	AREA
Lot 27, DL 913, CD, Plan 16511	109.1 m <sup>2</sup>

26-FF-2026



Approved under the Land Title Act  
this 14<sup>th</sup> day of December 1987

C. E. Olet  
Approving Officer: City of Prince George

This plan lies within the Fraser-Fort George Regional District.

I, Harry E. Hickman, a British Columbia land surveyor, of the city  
Prince George in British Columbia, certify that I was present at and  
personally superintended the survey represented by this plan,  
and that the survey and plan are correct. The survey was completed  
on the 21<sup>st</sup> day of November, 1987.

Harry E. Hickman B.C.L.S.

HICKMAN & GOOK  
B.C. LAND SURVEYORS  
691 FRONT STREET  
QUESNEL, B.C. V2J 2K9  
PHONE 992-2424

FILE: 87-1264 P6  
412-1488 4th Ave.  
Prince George, B.C.  
Phone: 562-4458