

Reference Plan of Consolidation of Lot 9 and Parcel A (S16191) Block 209, Plan 1268, District Lot 343, Cariboo District.

Plan No. 32690

Deposited in the Land Title Office at Prince George this 18 day of Dec., 1987.

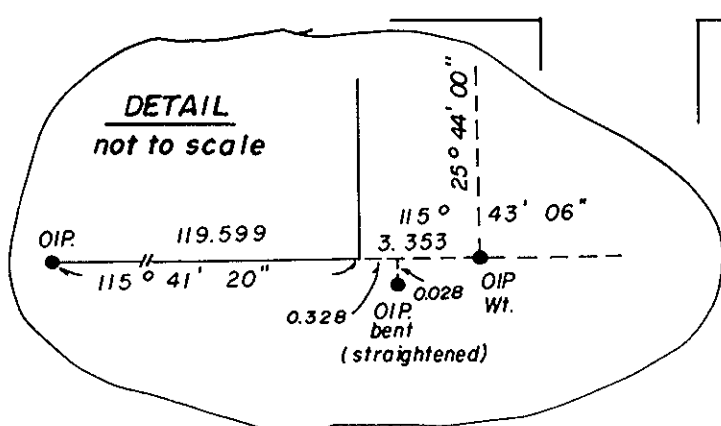
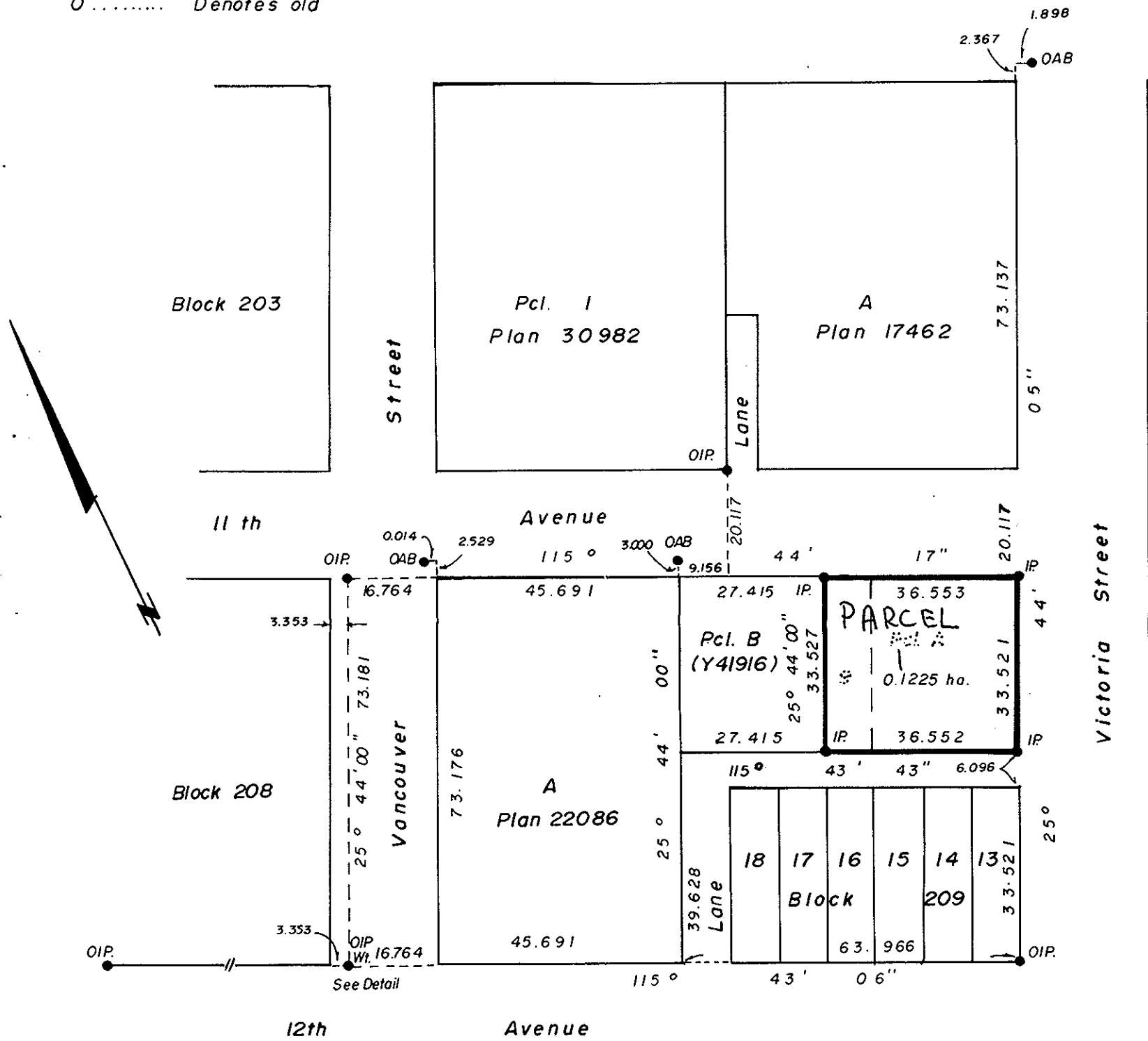
Scale : 1:1000 (All distances are in metres)



WGB Registrar

Bearings are astronomic derived from Plan 30982

- AB Aluminum Bolt.
- IP Standard Iron Post.
- Denotes "old"



I, G. Kilbride, a British Columbia Land Surveyor, of Prince George in British Columbia, certify that I was present at and personally superintended the survey represented by this plan, and that the survey and plan are correct. The survey was completed on the 30th day of November, 1987.

Gordon Kilbride
G. Kilbride, B.C.L.S.

Arta Capital Corp.

Authorized Signatories

This plan lies within the Fraser Fort George Regional District.

McWilliam, Whyte, Goble & Associates,
B.C. Land Surveyors,
Prince George - (604) 562-1196
Kamloops - Smithers - Salmon Arm.

REF. NO. 87244 QR 36