

PLAN NO. 32666

Deposited in the Land Title Office at Prince George this 9 day of Dec 1987.

REFERENCE PLAN OF CONSOLIDATION OF LOTS A and B, PLAN 20814, DISTRICT LOT 343, CARIBOO DISTRICT.

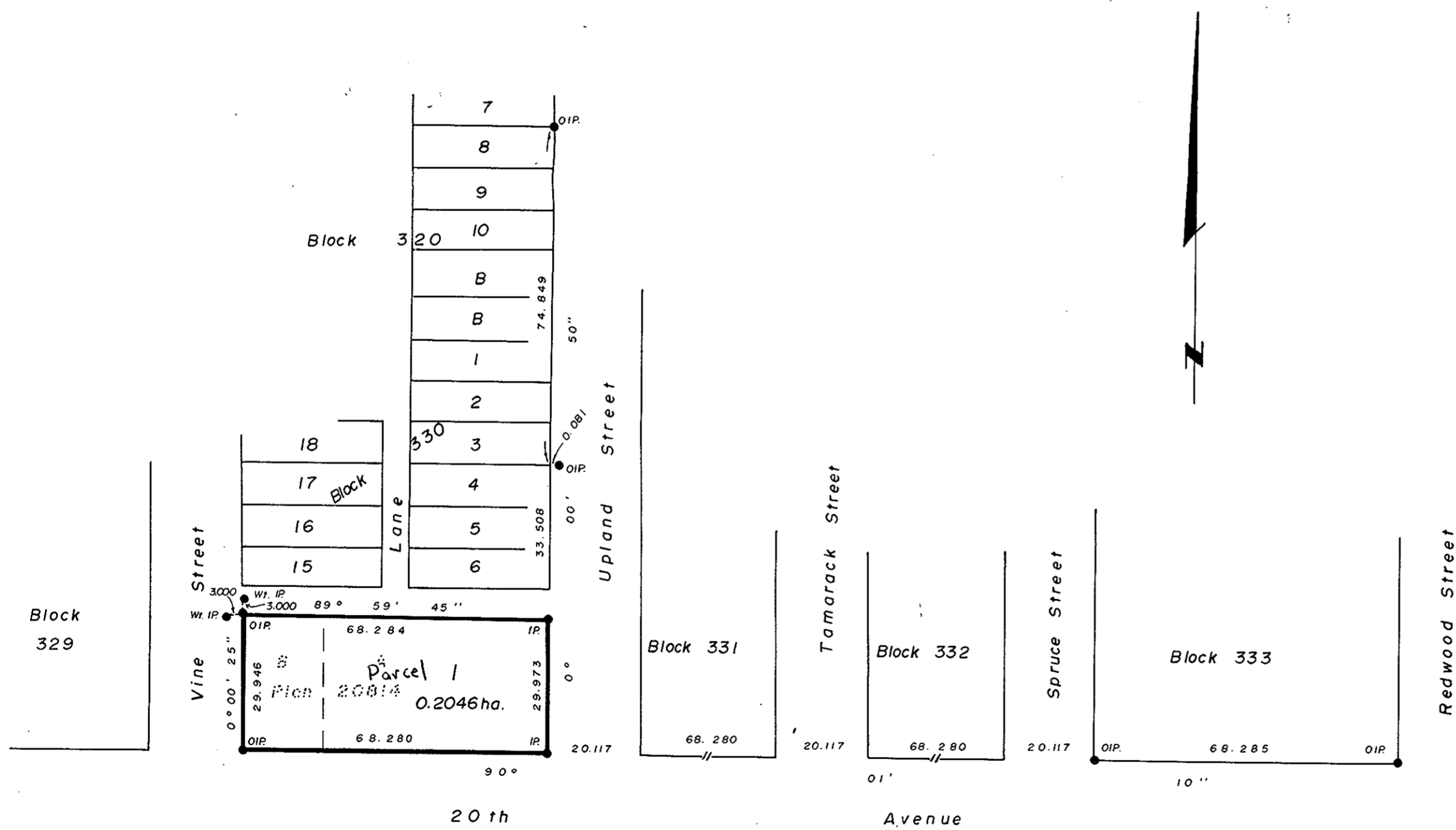
SCALE: 1:1000 (Distances are in metres)



Bearings are astronomic derived from Plan 20814 - 20th Avenue - 90° 01' 10"

- IP.....Standard Iron Post.
- P.P.....Standard Pipe Post.
-Denotes old
- Wt.....Denotes witness.

W.G.A. Registrar.



I, G. Kilbride, a British Columbia Land Surveyor, of Prince George in British Columbia, certify that I was present at and personally superintended the survey represented by this plan, and that survey and plan are correct. The survey was completed on the 11th day of August, 1987.

Gordon Kilbride
G. Kilbride, B.C.L.S.

This plan lies within the Fraser Fort George Regional District.

McWilliam, Whyte, Goble & Associates,
B.C. Land Surveyors,
Prince George - Kamloops - Smithers - Salmon Arm.

REF. NO. 87073-1 RA