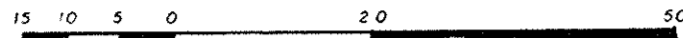


REFERENCE PLAN OF ROAD DEDICATION
 OF LOTS A AND B , BLOCK 65 AND LOTS A & B, BLOCK 66,
 PLAN 752 , DISTRICT LOT 937, CARIBOO DISTRICT.

SCALE: 1: 750 (Distances are in metres)



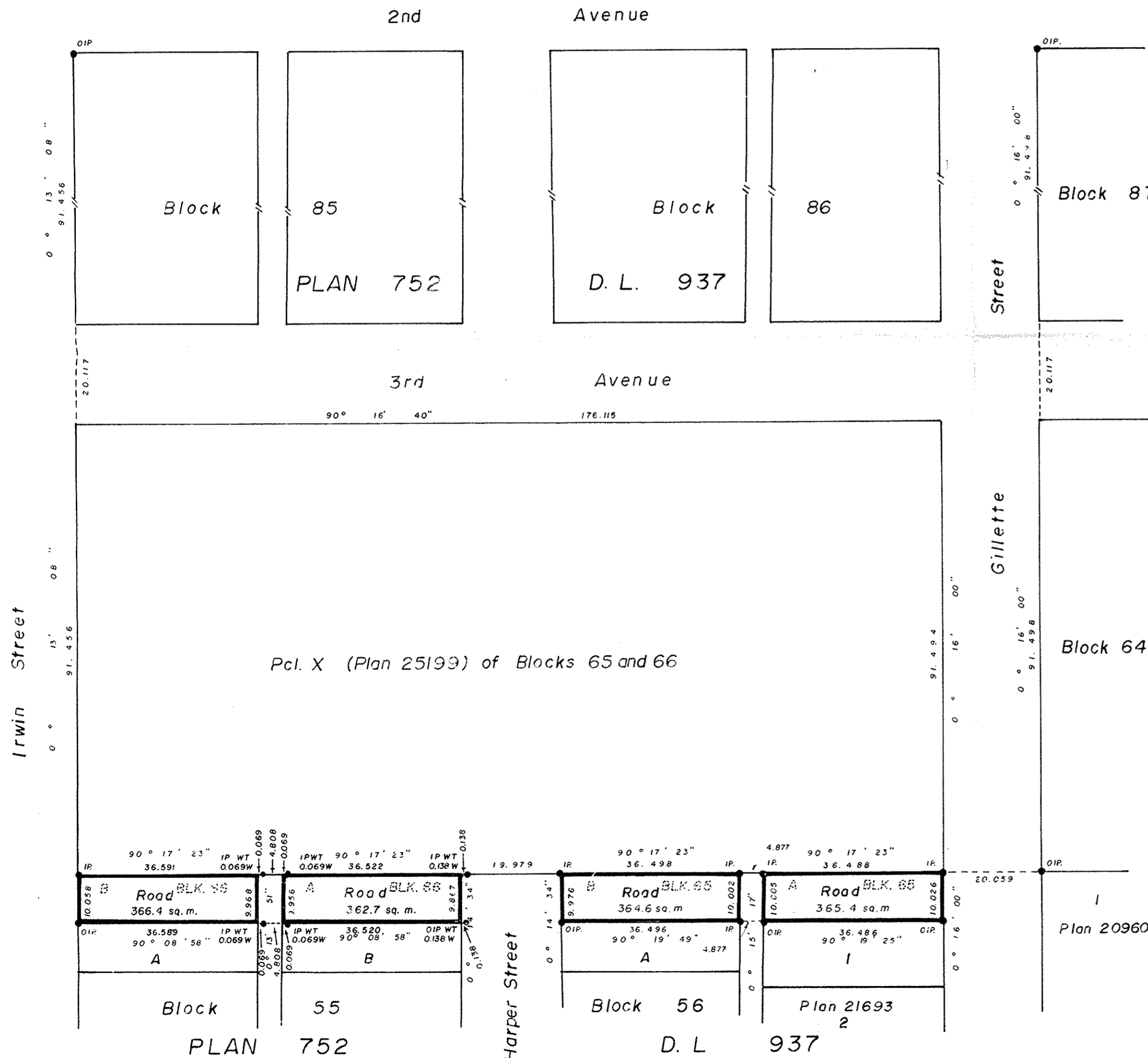
Bearings are astronomic derived from Plan 20960,
 Gillette Street = 0° 16' 00."

- IP.....Standard Iron Post.
-Denotes old.
- WT.....Denotes witness.

PLAN No. 32612

Deposited in the Land Title Office at Prince George, B.C.
 on this 19th day of November 1987

WJA
 REGISTRAR



BOOK OF REFERENCE

Description	Area Required
Lot A, Block 65, D.L. 937, Plan 752	365.4 sq. m.
Lot B, Block 65, D.L. 937, Plan 752	364.6 sq. m.
Lot A, Block 66, D.L. 937, Plan 752	362.7 sq. m.
Lot B, Block 66, D.L. 937, Plan 752	366.4 sq. m.

I, G. Kilbride, a British Columbia Land Surveyor of the City of Prince George, in British Columbia, certify that I was present at and personally superintended the survey represented by this plan, and that the survey and plan are correct.
 The survey was completed on the 15th day of October 1986.

G. Kilbride
 G. Kilbride, B.C.L.S.

Approved under the Land Title Act,
 on the 19th day of November 1987

[Signature]
 Approving Officer,
 City of Prince George.

Reapproved Oct 29th 1987

C.E. Olt

Owner: City of Prince George

[Signature]
 Mayor
Paul Williams
 Clerk

This plan lies within the FRASER-FORT
 GEORGE REGIONAL DISTRICT.

W.D. Usher & Associates,
 B.C. Land Surveyors,
 Prince George - B.C.
 Ref. No. 15254-3

00 1
 QB

W 30-1-87