

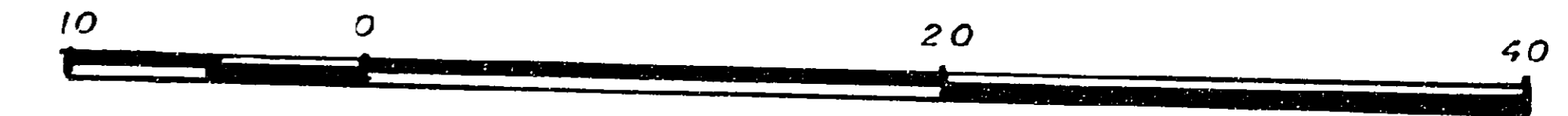
26FF-226

PLAN NO. 32546

Deposited in the Land Title Office at Prince George this 26 day of 04 1987.

W.G.B.
Registrar

PLAN OF STATUTORY RIGHT-OF-WAY
IN LOT 1, PLAN 32510 ----, AND THE
REM. LOT 1, PLAN 27855,
DISTRICT LOT 2611, CARIBOO DISTRICT.
SCALE : 1 : 500 (All distances are in metres)

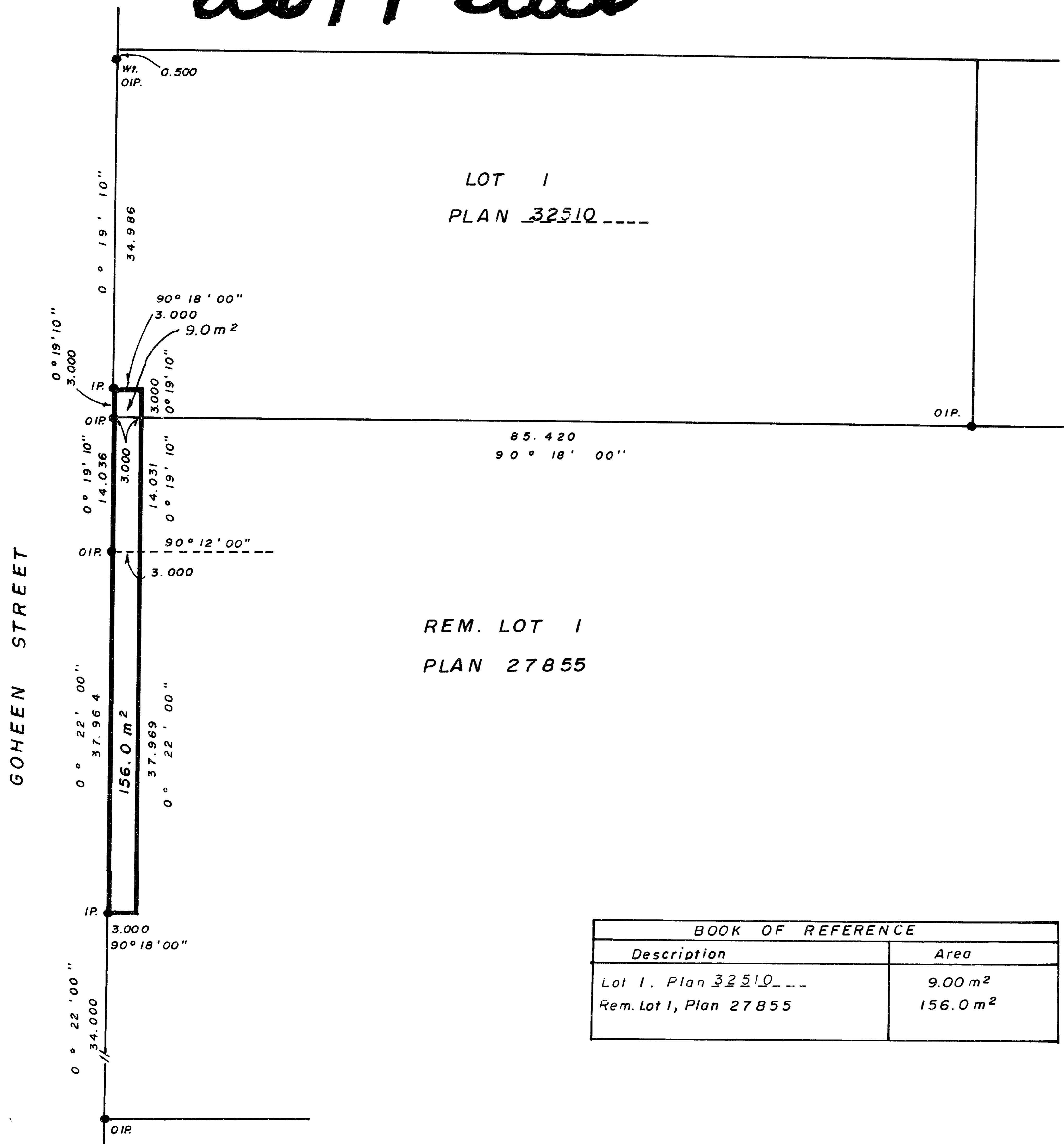


Bearings are astronomic derived from Plan 27855.

- IP.....Standard Iron Post.
-Denotes old.

I, V. Bartell, a British Columbia Land Surveyor of Prince George in British Columbia certify that I was present at and personally superintended the survey represented by this plan and that the survey and plan are correct. The survey was completed on the 30 day of June 1987.

V. Bartell
V. Bartell, B.C.L.S.



REM. LOT 1
PLAN 27855

LOT 1
PLAN 32510 ----

BOOK OF REFERENCE	
Description	Area
Lot 1, Plan <u>32510</u> ----	9.00 m ²
Rem. Lot 1, Plan <u>27855</u>	156.0 m ²

This plan lies within the Fraser Fort George Regional District.

McWilliam, Whyte, Goble, & Associates,
B.C. Land Surveyors,
Prince George - Kamloops - Smithers - Salmon Arm.

REF. NO. 87061 (L.2611)