

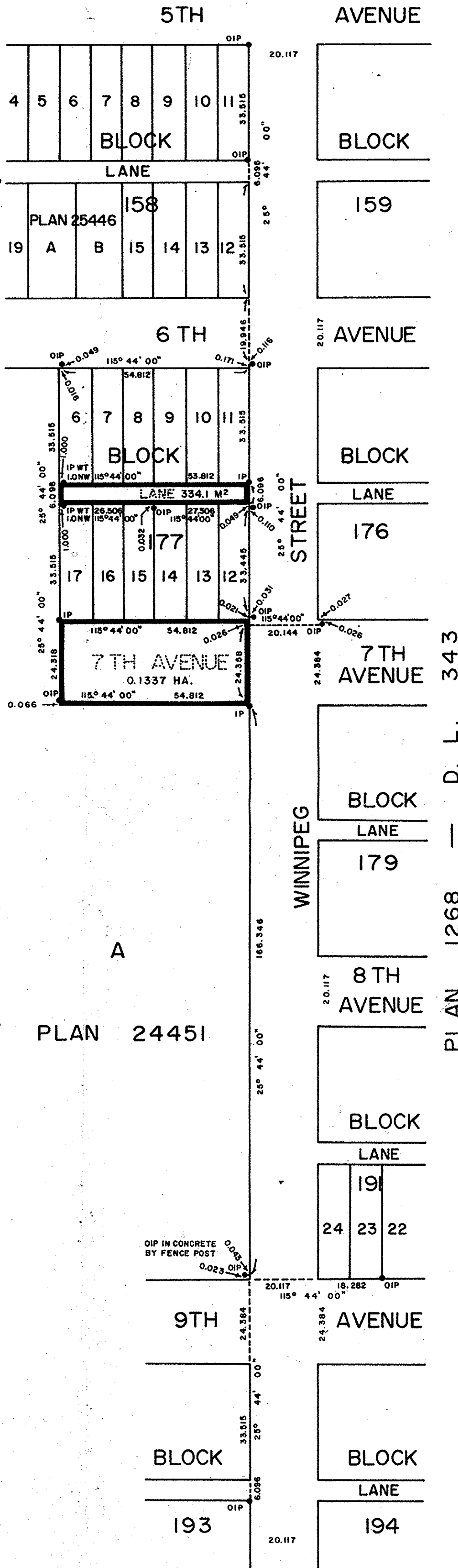
REFERENCE PLAN TO ACCOMPANY BYLAW NO. 4716 OF THE CITY OF PRINCE GEORGE CLOSING PARTS OF SEVENTH AVENUE AND LANE ADJACENT TO LOTS 12 TO 17 INCLUSIVE, BLOCK 177, DISTRICT LOT 343, PLAN 1268, CARIBOO DISTRICT.

SCALE = 1 : 1000



NOTE: Distances are shown in metres. Bearings are astronomic, derived from the westerly boundary of Winnipeg Street, Plan 1268.

LEGEND: ● OIP denotes an old iron pin found.
● IP denotes an iron pin set.
WT denotes witness.



PLAN No. 32538
Deposited in the Land Title Office at Prince George, B.C. this 22nd day of Oct, 1987.
Registrar WLB

PLAN 1268 — D. L. 343

I, GORDON KILBRIDE, a British Columbia Land Surveyor, of Prince George, in British Columbia, certify that I was present at and did personally superintend the survey represented by this plan, and that the survey and plan are correct. The survey was completed on the 20th day of December, 1985.

Gordon Kilbride

Approved under the Land Title Act this 21st day of September, 1987

C.E. Dost
Approving Officer, City of Prince George.

This plan lies within the Fraser-Fort George Regional District.

W.D. USHER & ASSOCIATES
LAND SURVEYORS
PRINCE GEORGE — B.C.
QA 14994(3)A