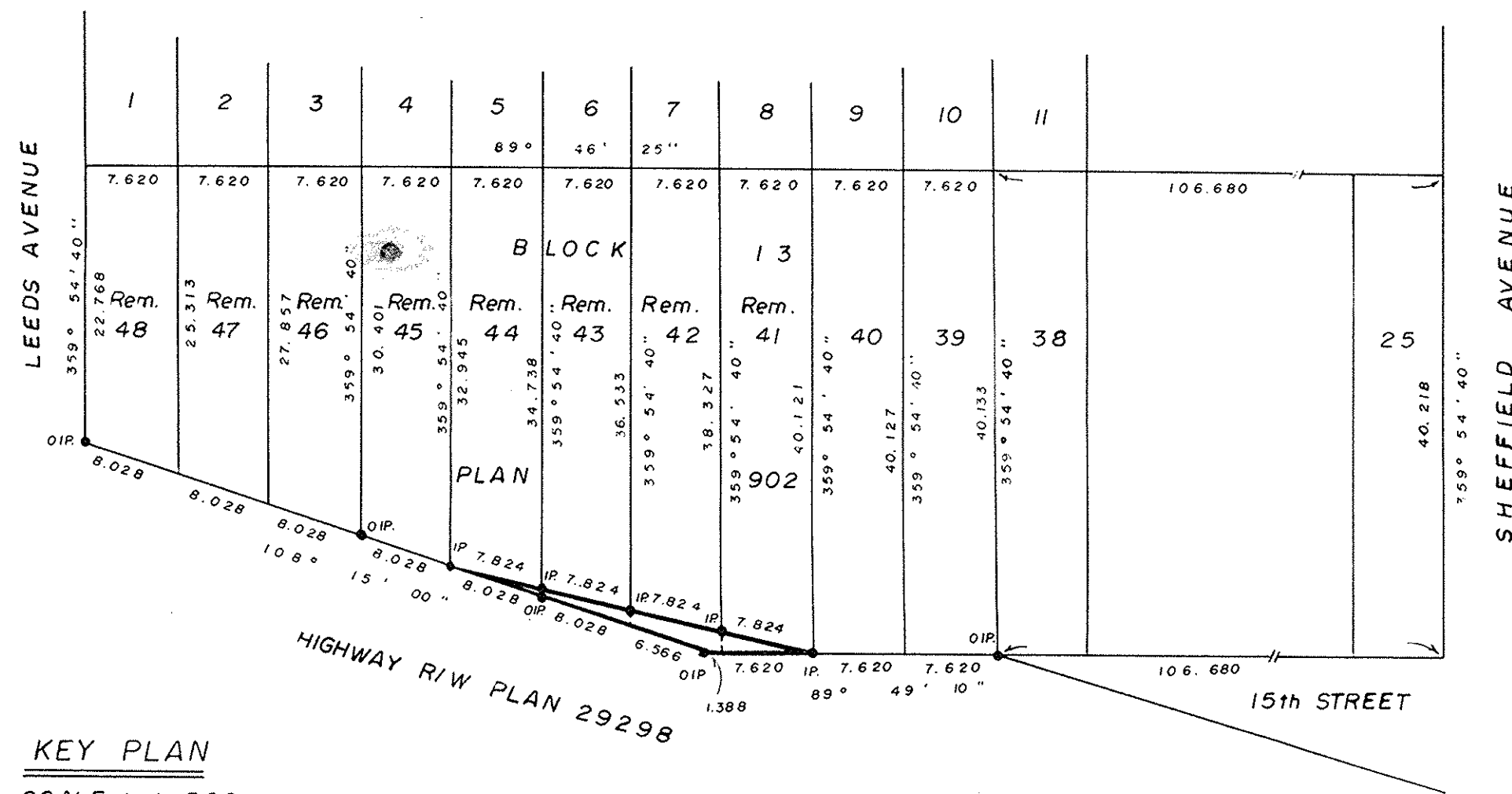


PLAN NO. 32488

DEPOSITED IN THE LAND TITLE OFFICE AT PRINCE GEORGE THIS 30 DAY OF SEPT. 1987.

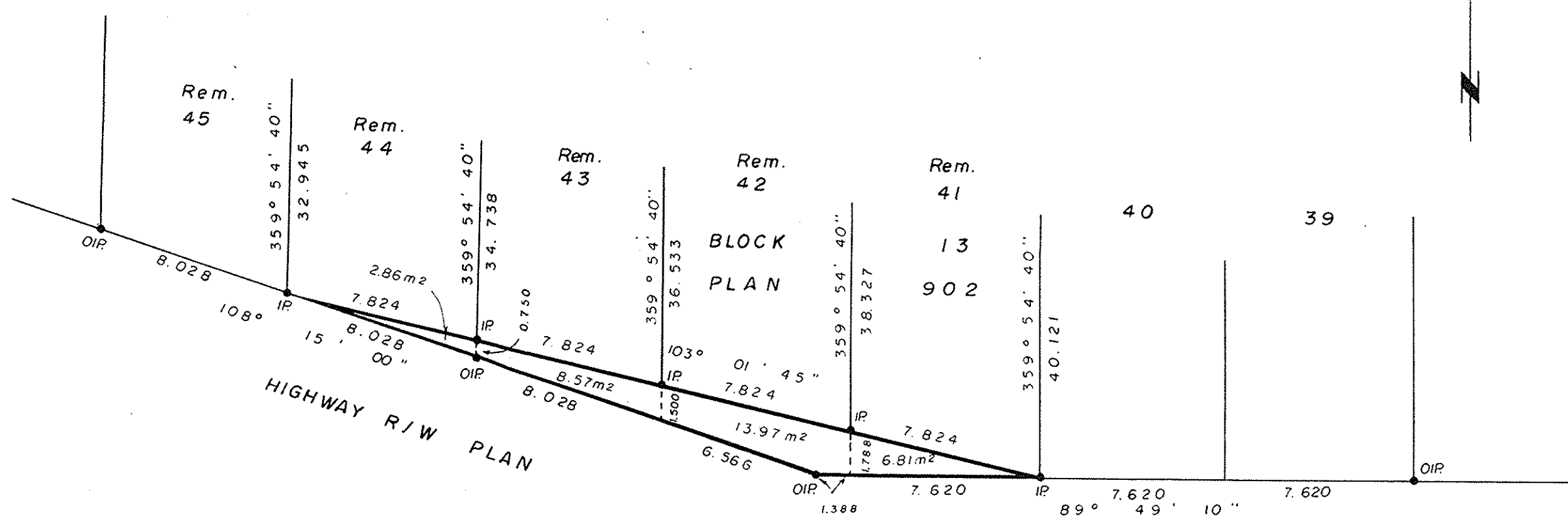
W.G.G.
REGISTRAR



KEY PLAN
SCALE : 1 : 500

PLAN OF STATUTORY RIGHT-OF-WAY FOR HIGHWAY, IN LOT 41, REM. LOT 42, REM. LOT 43, AND REM. LOT 44, BLOCK 13, PLAN 902, DISTRICT LOT 629, CARIBOO DISTRICT.

SCALE: 1: 200 (DISTANCES ARE IN METRES)



BEARINGS ARE ASTRONOMIC DERIVED FROM PLAN 29298.
●IP.....STANDARD IRON POST.
O.....DENOTES OLD.

I, V. BARTELL, A BRITISH COLUMBIA LAND SURVEYOR, OF PRINCE GEORGE IN BRITISH COLUMBIA CERTIFY THAT I WAS PRESENT AT AND PERSONALLY SUPERINTENDED THE SURVEY REPRESENTED BY THIS PLAN AND THAT THE SURVEY AND PLAN ARE CORRECT. THE SURVEY WAS COMPLETED ON THE 2 DAY OF July 1987.

V. Bartell
V. BARTELL, B.C.L.S.

BOOK OF REFERENCE	
DESCRIPTION	AREA
BLOCK 13, PLAN 902, D.L. 629	
PART LOT 44	2.86 m ²
PART LOT 43	8.57 m ²
PART LOT 42	13.97 m ²
PART LOT 41	6.81 m ²

THIS PLAN LIES WITHIN THE FRASER FORT GEORGE REGIONAL DISTRICT.

McWILLIAM, WHYTE, GOBLE, & ASSOCIATES,
B.C. LAND SURVEYORS,
PRINCE GEORGE-KAMLOOPS-SMITHERS-SALMON ARM.
REF. NO. 87008 (L.629)