

D. L. 2155

Rem. N.E. 1/4
D. L. 629

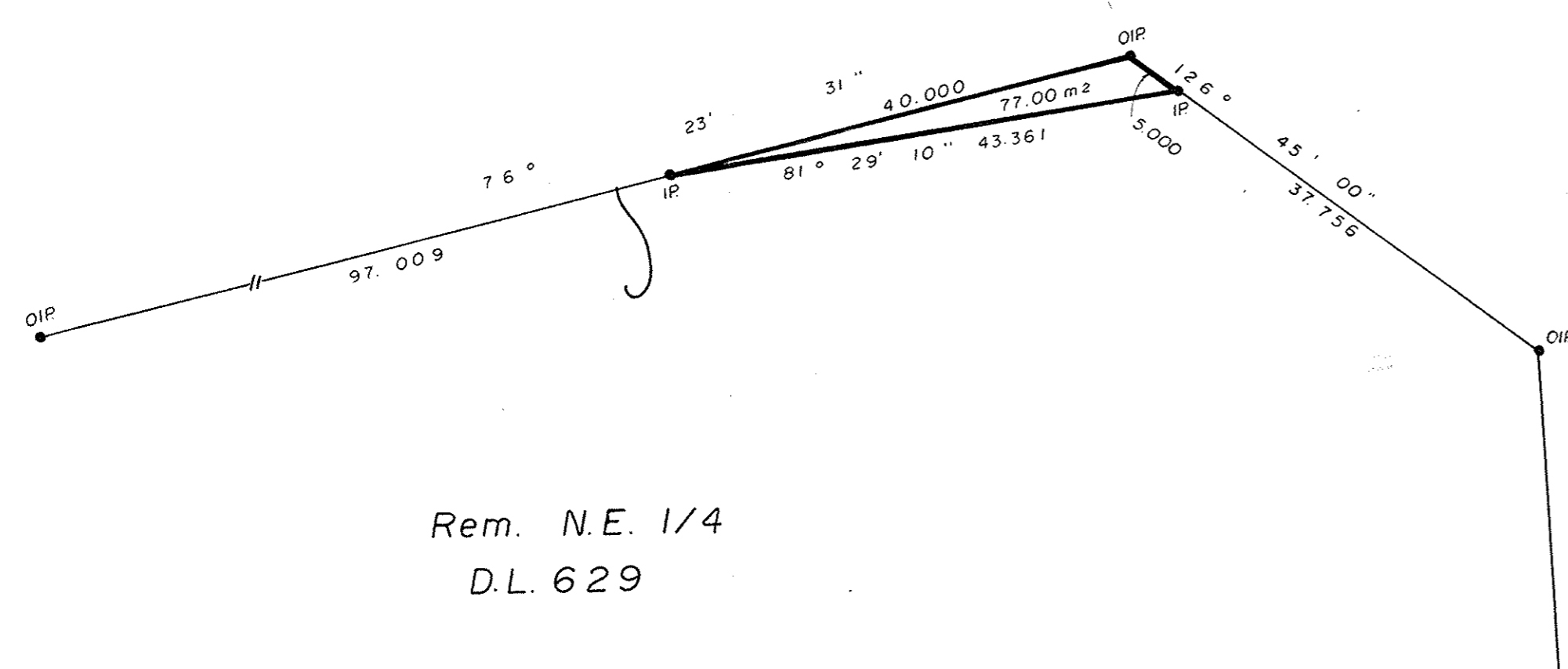
Yellowhead

Highway

Plan 23000

Aitcheson Road

Rem. N.E. 1/4
D.L. 629



32482

PLAN NO. _____

Deposited in the Land Title Office at Prince George
this 28 day of Sept 1987.

W.B.F.
Registrar

PLAN OF STATUTORY RIGHT OF WAY
FOR HIGHWAY PURPOSES
WITHIN PART OF REM. N.E. 1/4
DISTRICT LOT 629, CARIBOO DISTRICT.

SCALE: 1:500 (DISTANCES ARE IN METRES)



Bearings are astronomic derived from
Plan 23000

- IP..... Standard Iron Post.
- O..... Denotes old.

I, V. Bartell, a British Columbia Land Surveyor, of
Prince George in British Columbia, certify that I was
present at and personally superintended the survey
represented by this plan, and that the survey and
plan are correct. The survey was completed on the
20th day of June 1987.

V. Bartell
V. Bartell, B.C.L.S.

BOOK OF REFERENCE	
Description	Area
R/W in Rem. N.E. 1/4 D.L. 629	77.00 m ²

This plan lies within the Fraser Fort
George Regional District.

McWilliam, Whyte, Goble, & Associates,
B.C. Land Surveyors,
Prince George-Kamloops-Smithers-Salmon Arm.
REF. NO. 87008 (L. 629)