

PLAN OF SUBDIVISION OF  
CLOSED 20th AVENUE, BY LAW PLAN 32449,

DISTRICT LOTS 343 and 417,  
PARCEL X OF PLAN 1409, DISTRICT LOT 417, and PART OF  
REM. OF PARCEL Z OF PLAN 1409, DISTRICT LOT 417,  
CARIBOO DISTRICT.

Scale: 1:1000 (ALL DISTANCES ARE IN METRES)

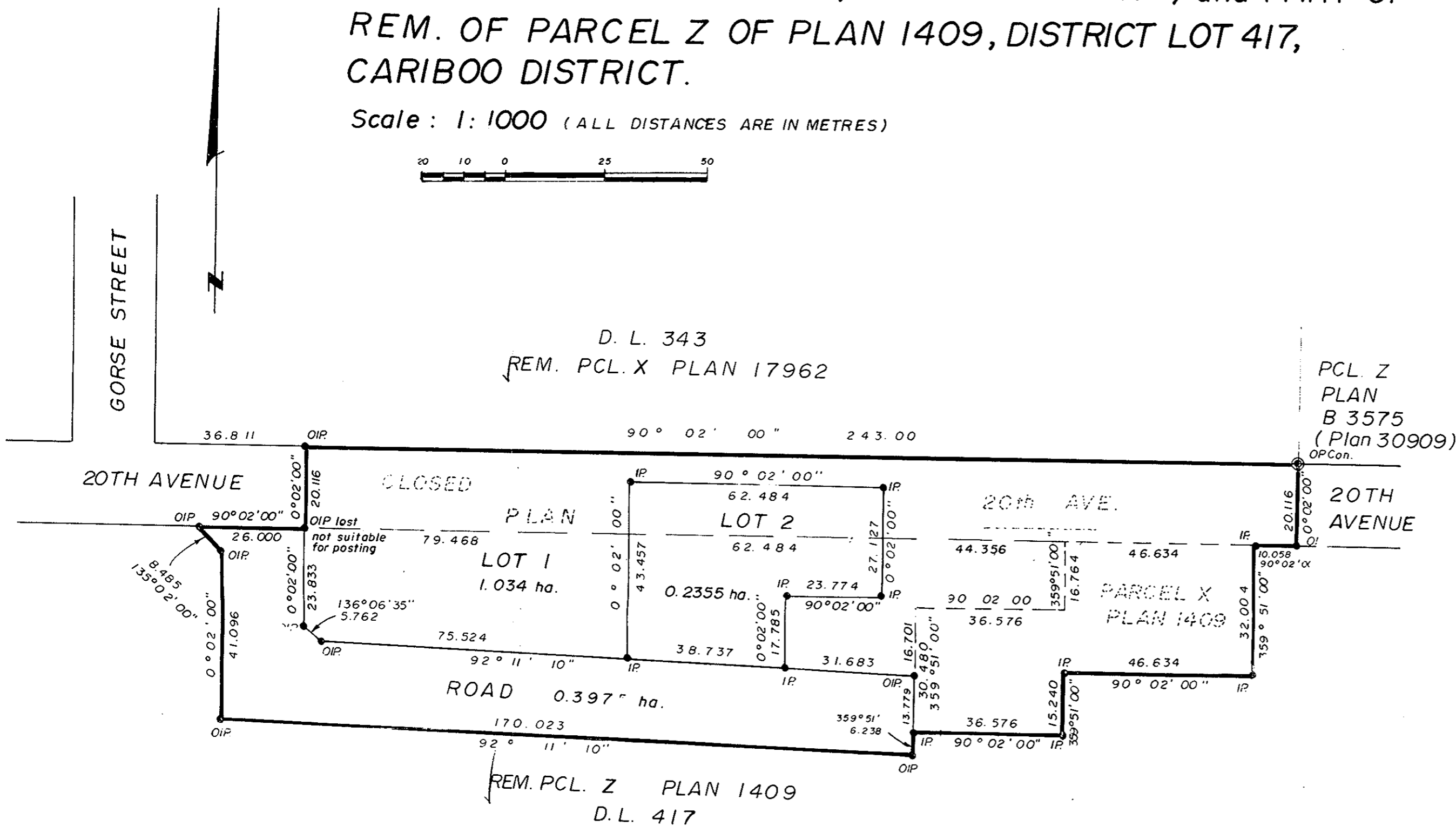


32450

PLAN No. 32449

Deposited in the Land Title Office at Prince George, B.C.  
on this 11th day of Sept. 1987

W.G.G.  
REGISTRAR



Bearings are astronomic and are derived  
from Plan 1268.

- P Con.....Standard Concrete Post
- PP.....Standard Pipe Post
- CIP.....Capped Iron Post
- IP.....Iron Post
- LP.....Lead Plug
- .....Denotes Old
- WT.....Denotes Witness

I, V. Bortell, a British Columbia Land Surveyor of the City of  
Prince George, in British Columbia, certify that I was present at and  
personally superintended the survey represented by this plan, and  
that the survey and plan are correct.  
The survey was completed on the 29th day of April 1987.

V. Bortell, B.C.L.S.

Approved under the Land Title Act  
on the 21st day of April 1987

Approving Officer,  
City of Prince George.

Reapproved Aug. 26th 1987

*[Signature]*

Owner: City of Prince George

Mayor

Clerk

This plan lies within the FRASER-FORT  
GEORGE REGIONAL DISTRICT.

McWILLIAM--WHYTE--GOBLE and ASSOCIATES  
BRITISH COLUMBIA LAND SURVEYORS  
Kamloops - Prince George - Smithers - Salmon Arm - Clearwater  
FILE 86014 (D.L. 417)

Wilson 12/28/87