

REFERENCE PLAN TO ACCOMPANY BY LAW 4814,  
 CITY OF PRINCE GEORGE  
 TO CLOSE PART OF 20th AVENUE AS SHOWN ON  
 PLAN 1268, D.L. 343 AND PLAN 1409, D.L. 417,  
 TO ESTABLISH AS ROAD PART OF PARCEL Z,  
 (DF42712), PLAN 1409, D.L. 417, CARIBOO DISTRICT.

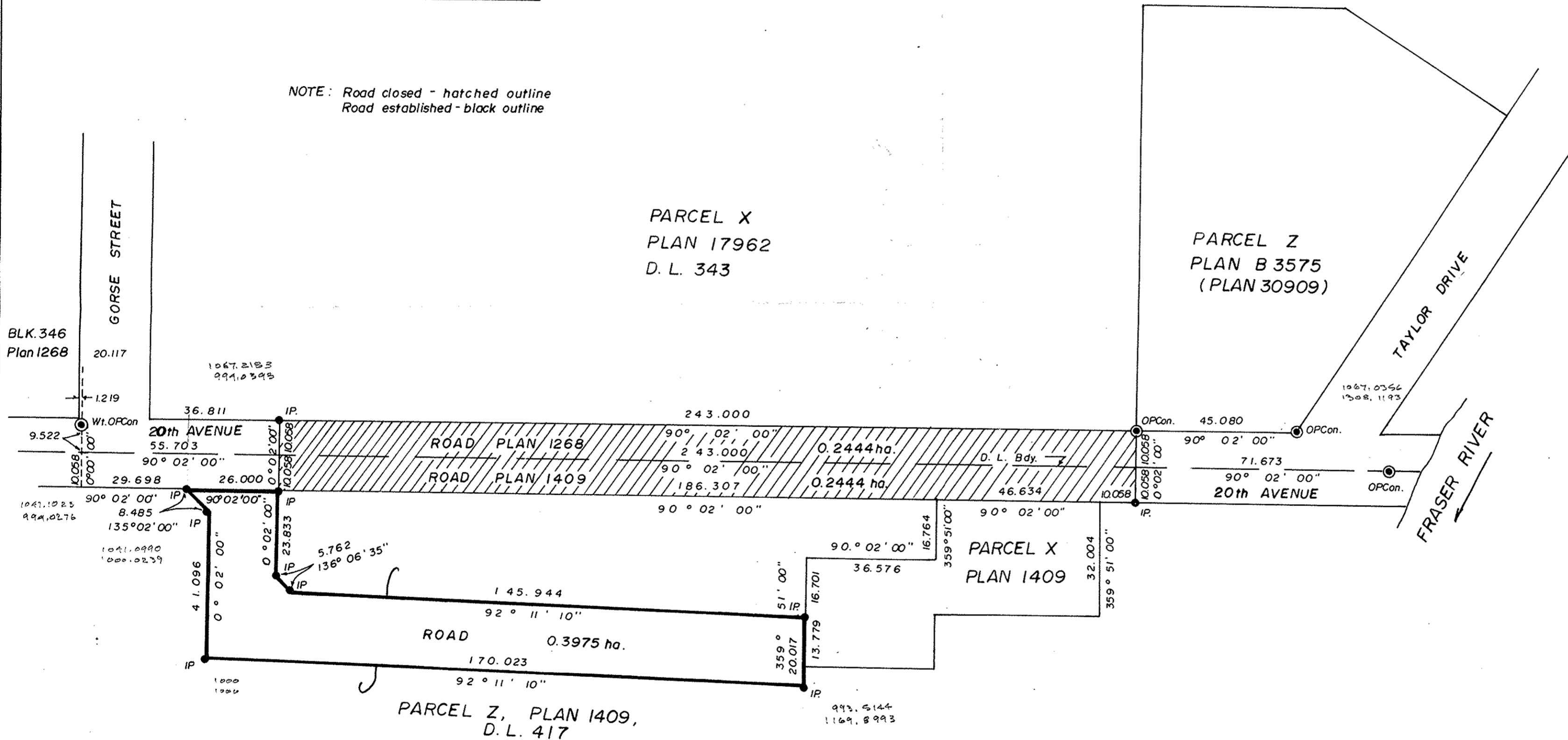
PLAN NO. 32449  
 DEPOSITED IN THE LAND TITLE OFFICE AT PRINCE  
 GEORGE THIS 11th DAY OF SEPT 1987.

W.G.G.  
 REGISTRAR

SCALE: 1:1000 (Distances are in metres)



NOTE: Road closed - hatched outline  
 Road established - black outline



THE SEAL OF THE CITY OF PRINCE GEORGE  
 WAS AFFIXED HERETO IN THE PRESENCE OF:

MAYOR *[Signature]*

CLERK *[Signature]*

APPROVED, UNDER THE LAND TITLE ACT  
 THIS 16th DAY OF February 1987

*[Signature]*

APPROVING OFFICER  
 CITY OF PRINCE GEORGE

Reapproved July 6th 1987

*[Signature]*

BEARINGS ARE ASTRONOMIC DERIVED FROM  
 PLAN 1268.

- IP..... STANDARD IRON POST.
- PCon..... STANDARD POST IN CONCRETE
- ..... DENOTES OLD.

I, V. BARTELL, A BRITISH COLUMBIA LAND SURVEYOR,  
 OF PRINCE GEORGE, IN BRITISH COLUMBIA, CERTIFY  
 THAT I WAS PRESENT AT AND PERSONALLY SUPERINTENDED  
 THE SURVEY REPRESENTED BY THIS PLAN, AND THAT THE  
 SURVEY AND PLAN ARE CORRECT. THE SURVEY WAS  
 COMPLETED ON THE 7 DAY OF MARCH, 1986.

*[Signature]*  
 V. BARTELL, B.C.L.S.

THIS PLAN LIES WITHIN THE FRASER FORT  
 GEORGE REGIONAL DISTRICT.

McWILLIAM, WHYTE, GOBLE & ASSOCIATES,  
 B.C. LAND SURVEYORS,  
 PRINCE GEORGE-KAMLOOPS-SMITHERS-SALMON ARM

REF. NO. 86014 DL 343