

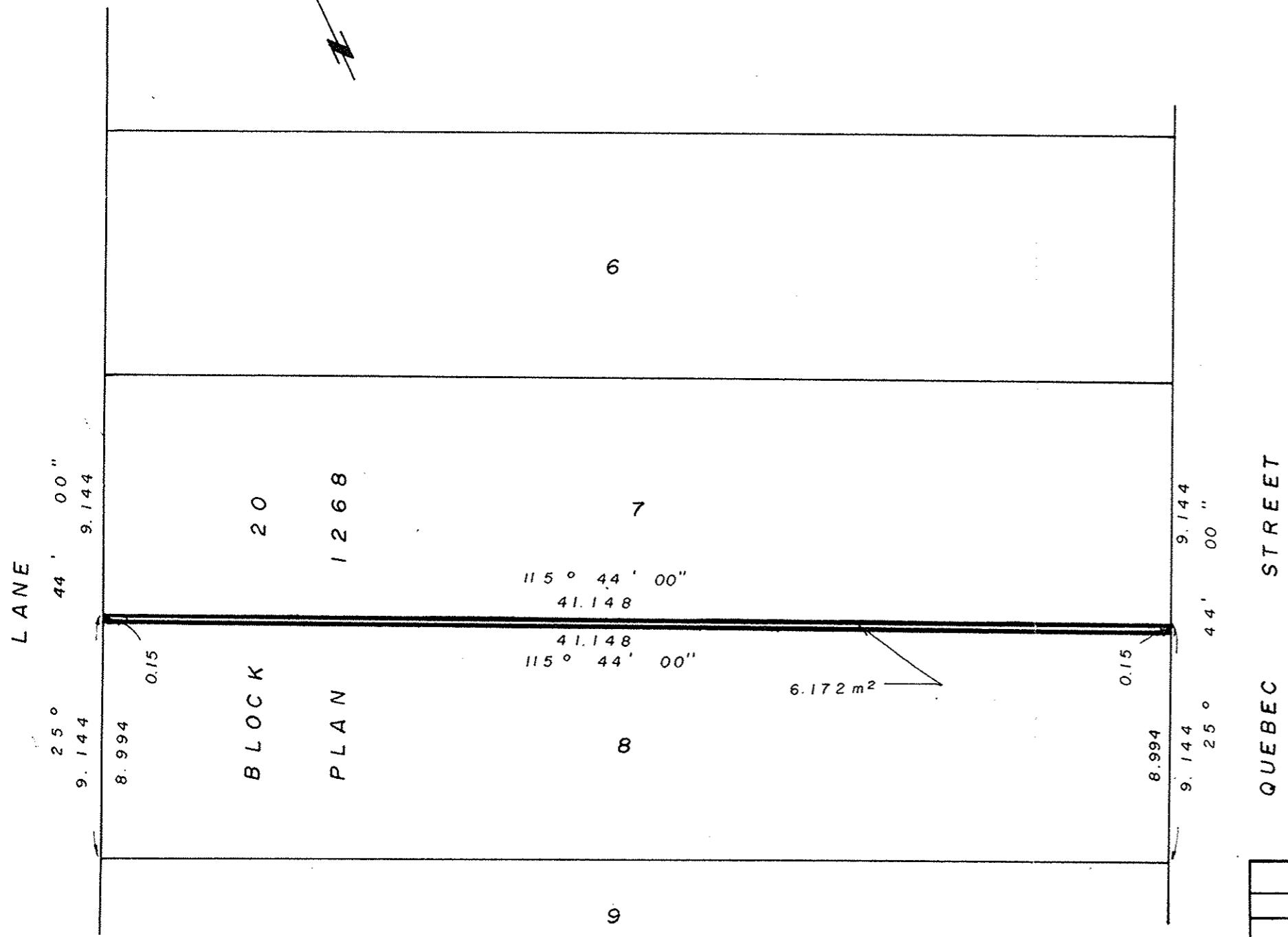
PLAN NO. 32384

Deposited in the Land Title Office at Prince George this 28th day of AUGUST 1987.

----- W.G.G. -----
Registrar

EXPLANATORY PLAN OF EASEMENT
FOR BUILDING ENCROACHMENT
IN LOT 8, BLOCK 20, PLAN 1268,
DISTRICT LOT 343, CARIBOO DISTRICT.

SCALE: 1:200 (Distances are in metres)



CERTIFIED CORRECT
according to Land Title Office Records
this 5th day of August, 1987.

Gordon Kilbride

G. Kilbride, B.C.L.S.

Book of Reference	
Description	Area
Lot 8	6.172 m²

This plan lies within the Fraser Fort George Regional District.

McWilliam, Whyte, Goble, & Associates,
B.C. Land Surveyors,
Prince George - Kamloops - Smithers - Salmon Arm.
REF. NO. 87121 (L343, Bk20)