

PLAN No. 32315

Deposited in the Land Title Office at Prince George, B.C.  
on this 22 day of July 1987.

W.G.G.  
REGISTRAR

Forest Ave.

Plan 23476 9

23799 1

Gould Cres.

28

29

Gould Cres.

Plan 22

2  
Plan A B  
Plan 28266

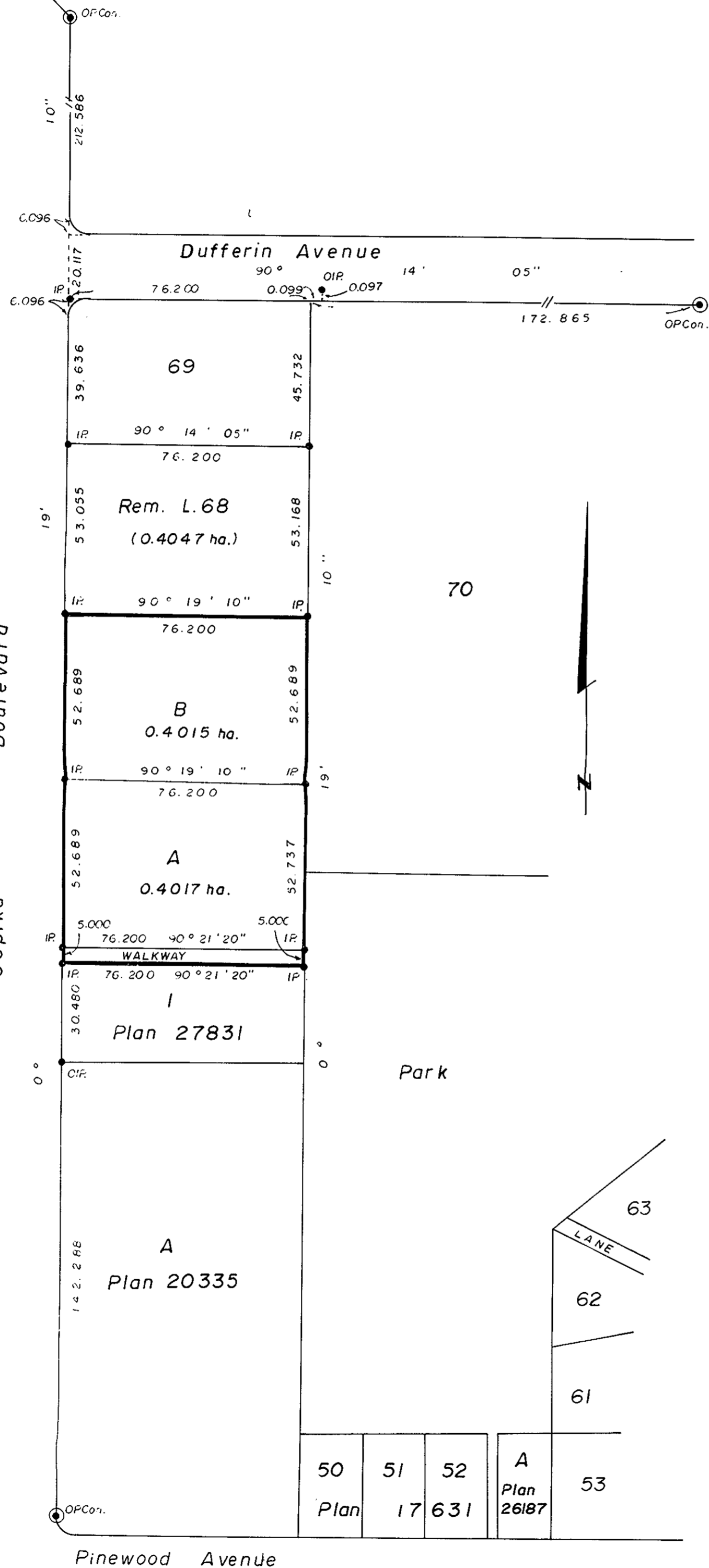
Hesse Place

25470

15 16

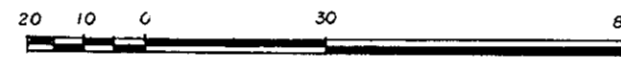
17

Boulevard  
Ospika



**PLAN OF SUBDIVISION OF  
PART OF REMAINDER OF LOT 68,  
PLAN 17631, DISTRICT LOT 8174,  
CARIBOO DISTRICT.**

Scale : 1:1250 (All distances are in meters.)



Bearings are astronomic and are derived  
from Plan 17631.

- P Con.....Standard Concrete Post
- PP.....Standard Pipe Post
- CIP.....Capped Iron Post
- IP.....Iron Post
- LP.....Lead Plug
- .....Denotes Old
- WT.....Denotes Witness

I, G. Kilbride, a British Columbia Land Surveyor, of the City of Prince George, in British Columbia, certify that I was present at and personally supervised the survey represented by this plan, and that the survey and plan are correct.  
The survey was completed on the 3rd day of June 1987.

G. Kilbride, B.C.L.S.

Owner: City of Prince George

Mayor  
Clerk

Approved under the Land Title Act  
on the 22 day of JUNE 1987

Approving Officer,  
City of Prince George

This plan lies within the FRASER-FORT  
GEORGE REGIONAL DISTRICT.

G.F. Kilbride & Associates,  
BRITISH COLUMBIA LAND SURVEYORS  
Prince George — B.C.  
FILE 15507 QZ 4