

PLAN N<sup>o</sup> 32313

Deposited in the Land Title Office at Prince George, B.C. this 16 day of July, 1987.

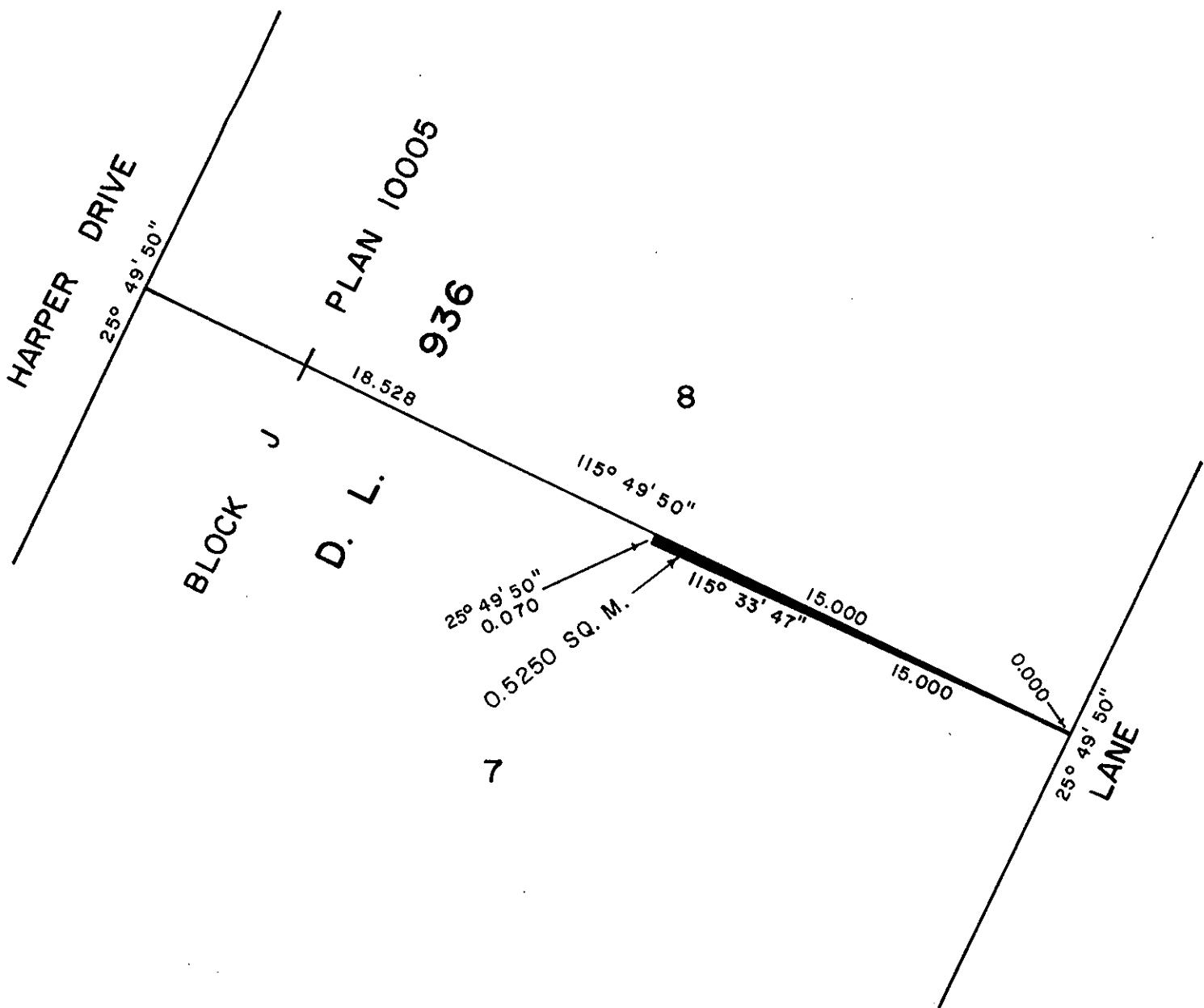
W.G.G.  
Registrar

EXPLANATORY PLAN TO ACCOMPANY  
AN ENCROACHMENT AGREEMENT ON  
PART OF LOT 7, BLOCK J, DISTRICT  
LOT 936, CARIBOO DISTRICT,  
PLAN 10005

SCALE = 1 : 200



Bearings are astronomic, derived from Plan 10005.  
Distances are shown in metres.



CERTIFIED CORRECT  
This 18th day of November, 1986.

Gordon Kilbride  
Gordon Kilbride, B.C.L.S.

This plan lies within the Fraser-Fort  
George Regional District.

W. D. USHER & ASSOCIATES  
LAND SURVEYORS  
PRINCE GEORGE — B.C.  
QD 5 & 31 15135