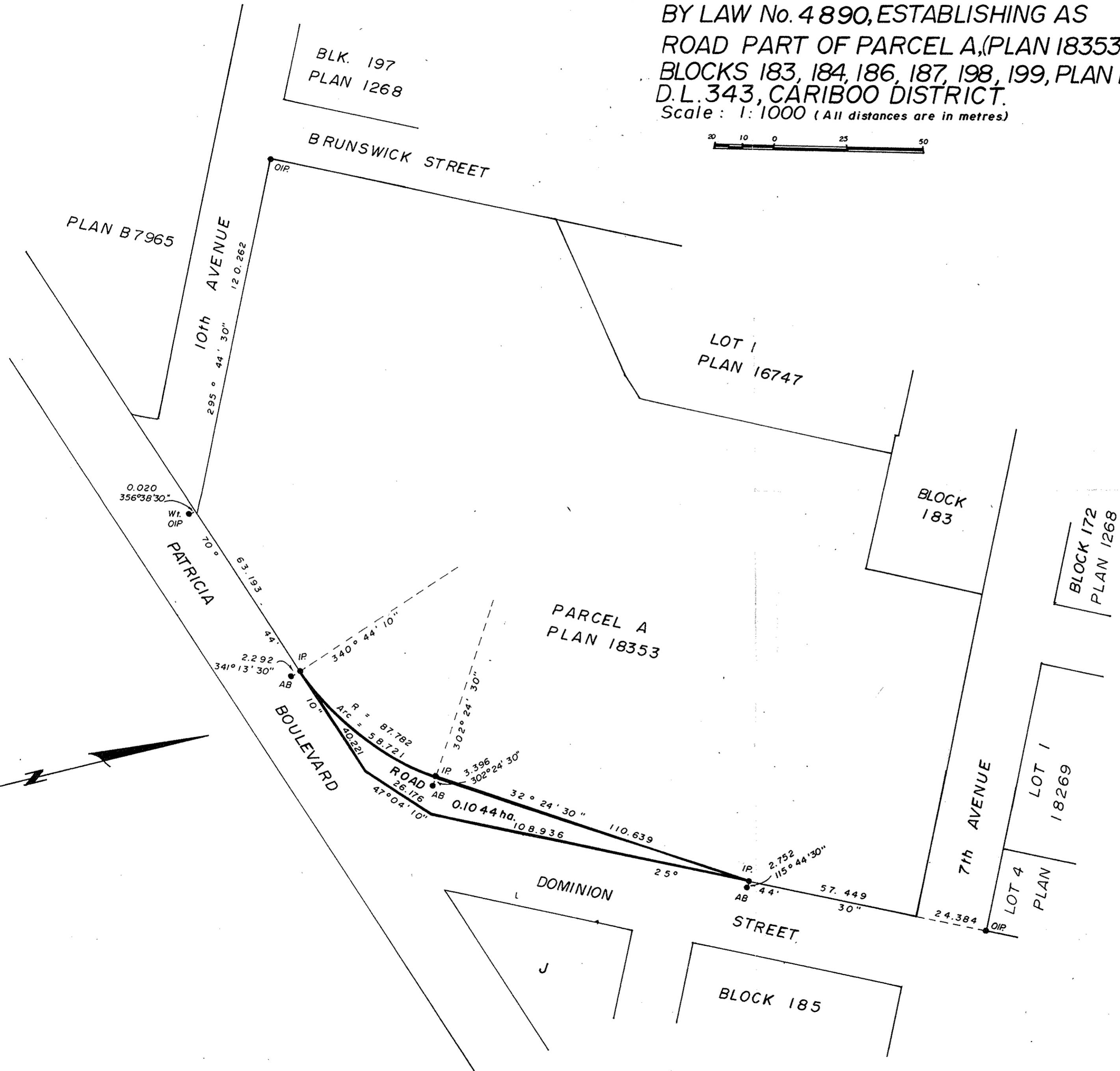
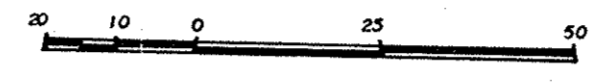


REFERENCE PLAN
 TO ACCOMPANY CITY OF PRINCE GEORGE
 BY LAW No. 4890, ESTABLISHING AS
 ROAD PART OF PARCEL A, (PLAN 18353)
 BLOCKS 183, 184, 186, 187, 198, 199, PLAN 1268,
 D.L. 343, CARIBOO DISTRICT.
 Scale: 1:1000 (All distances are in metres)

32230

PLAN NO. _____
 DEPOSITED IN THE LAND TITLE OFFICE AT
 PRINCE GEORGE THIS 23 DAY OF JUNE 1987.

W.G.F.
 REGISTRAR



BEARINGS ARE ASTRONOMIC DERIVED FROM
 PLAN 18353

- IP..... STANDARD IRON POST.
- A.B..... ALUMINUM BOLT.
- DENOTES "OLD"
- WI..... DENOTES "WITNESS"

I, D. KEOWN, A BRITISH COLUMBIA LAND SURVEYOR, OF
 PRINCE GEORGE IN BRITISH COLUMBIA CERTIFY THAT
 I WAS PRESENT AT AND PERSONALLY SUPERINTENDED
 THE SURVEY REPRESENTED BY THIS PLAN AND THAT THE
 SURVEY AND PLAN ARE CORRECT. THE SURVEY WAS
 COMPLETED ON THE 5th DAY OF November 1986.

D. Keown
 D. KEOWN, B.C.L.S.

OWNER: CITY OF PRINCE GEORGE

[Signature]
 Mayor

[Signature]
 Clerk

THIS PLAN LIES WITHIN THE FRASER FORT GEORGE
 REGIONAL DISTRICT.

McWILLIAM, WHYTE, GOBLE & ASSOCIATES.
 B.C. LAND SURVEYORS,
 PRINCE GEORGE - KAMLOOPS - SMITHERS - SALMON ARM
 REF. NO. 69100 - 6 (DL343)