

REFERENCE PLAN OF ACCESS EASEMENT
OVER PART OF LOT A. PLAN 30915, D.L. 753
and PART OF PARCEL I, PLAN 29709, D.L. 2003,
CARIBOO DISTRICT.

PLAN No. 32215
Deposited in the Land Title Office at
Prince George B.C. this 16 day of
June 1987.

SCALE: 1:1000

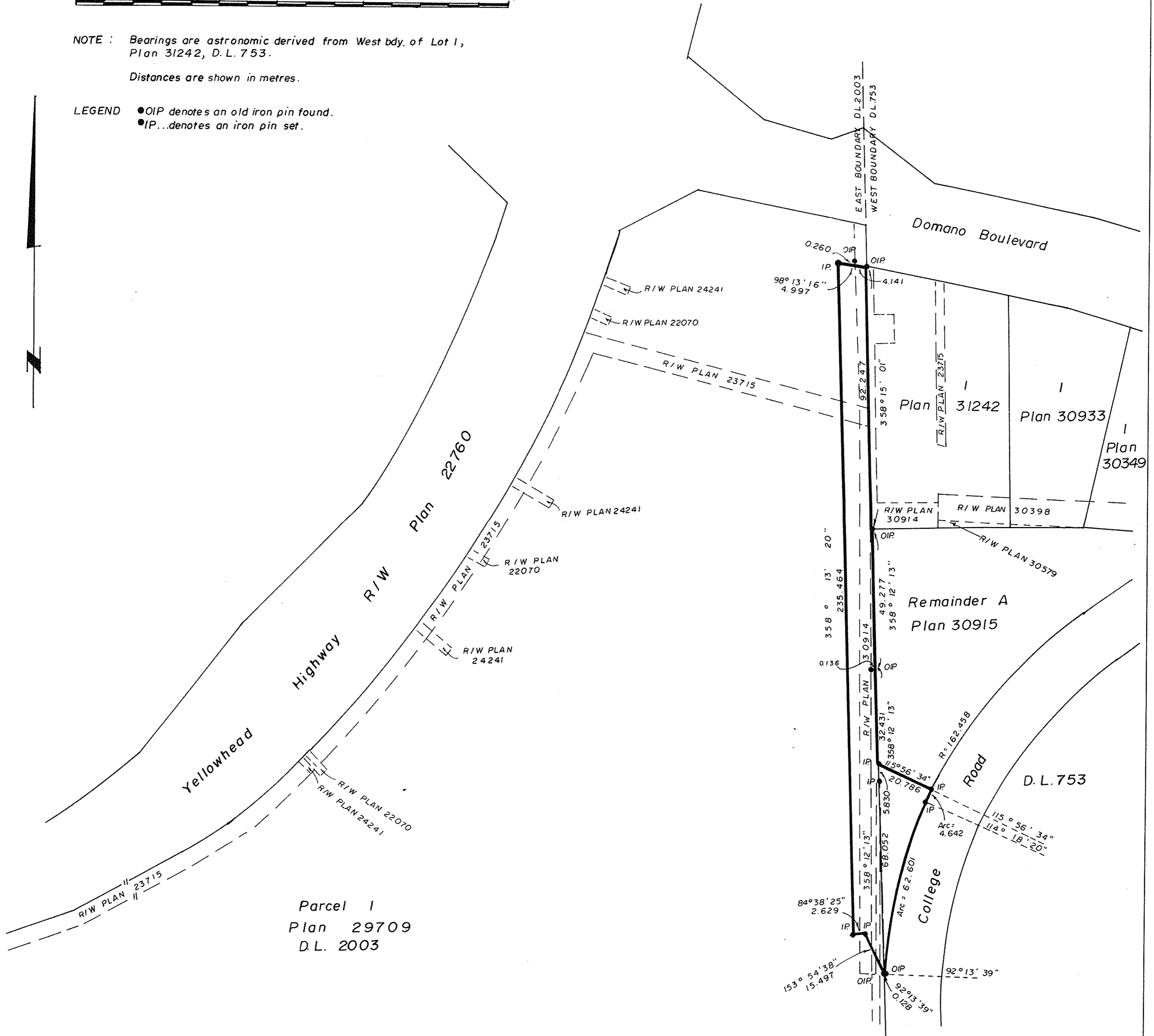


NOTE: Bearings are astronomic derived from West bdy. of Lot 1,
Plan 31242, D.L. 753.

Distances are shown in metres.

LEGEND ●OIP denotes an old iron pin found.
●IP...denotes an iron pin set.

W.G.G.
Registrar



Parcel I
Plan 29709
D.L. 2003

Book of Reference	
Description	Area
Lot A Plan 30915	529.0 sq.m
Pcl. I, Plan 29709	2150 sq.m.

I, G. Kilbride, a British Columbia Land Surveyor
of Prince George in British Columbia certify
that I was present at and personally superintended
the survey represented by this plan and that the
survey and plan are correct. The survey was completed
on the 25 day of May 1987.

Gordon Kilbride
G. Kilbride, B.C.L.S.

This plan lies within the Fraser Fort George
Regional District.

G.F. KILBRIDE & ASSOCIATES,
(formerly Usher's)
B.C. LAND SURVEYORS,
PRINCE GEORGE - B.C.