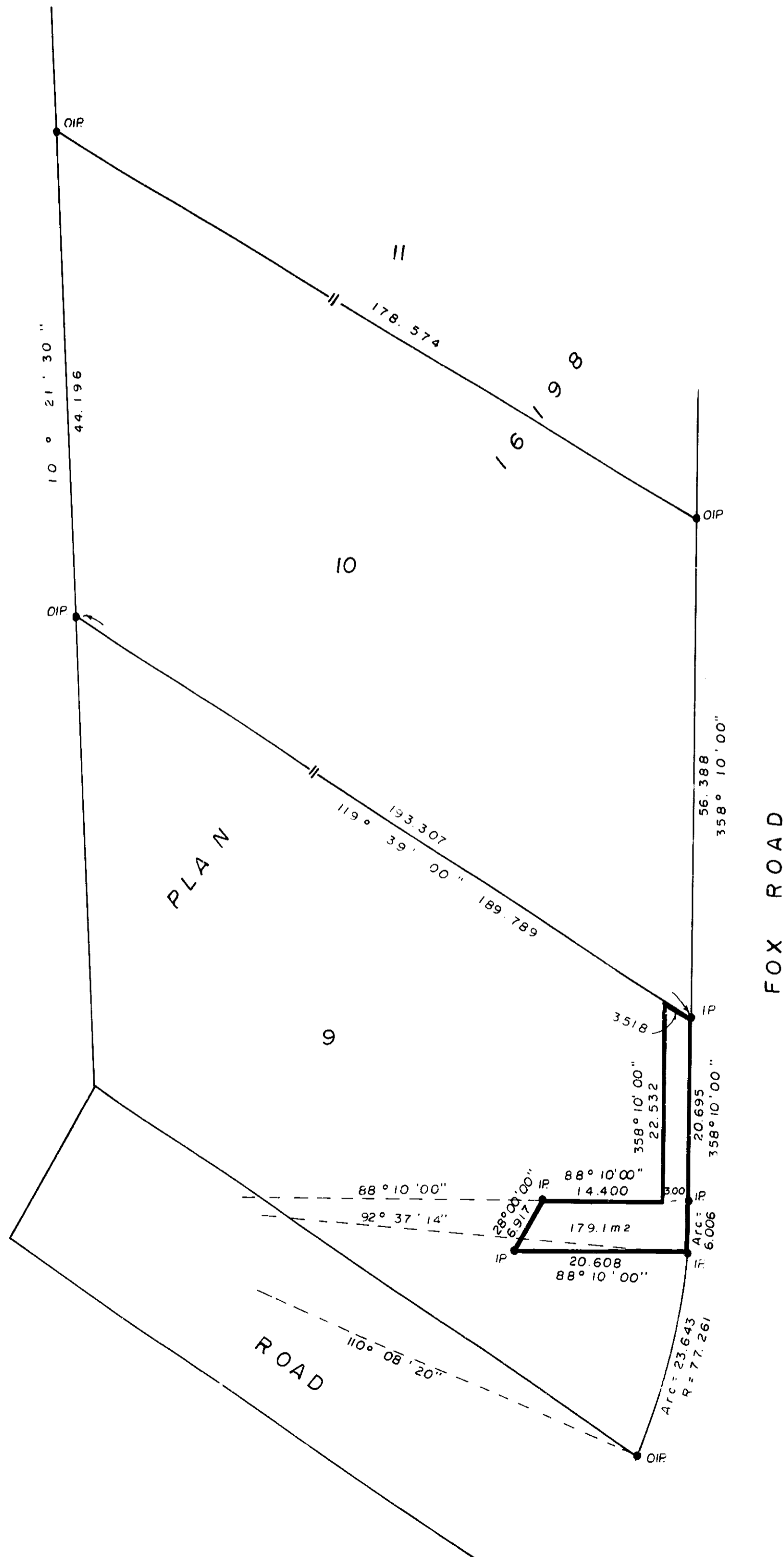


26-FF

PLAN NO. 32172

DEPOSITED IN THE LAND TITLE OFFICE AT PRINCE GEORGE
THIS 14th DAY OF May 1987.

W.G. ...
REGISTRAR



REFERENCE PLAN
FOR EASEMENT IN LOT 9,
PLAN 16198, DISTRICT LOT 2422,
CARIBOO DISTRICT.

Scale : 1: 500 (DISTANCES ARE IN METRES)



BEARINGS ARE ASTRONOMIC DERIVED FROM
PLAN 16198.

- IP.....STANDARD IRON POST
-DENOTES OLD.

I, V. BARTELL, A BRITISH COLUMBIA LAND SURVEYOR,
OF PRINCE GEORGE IN BRITISH COLUMBIA CERTIFY
THAT I WAS PRESENT AT AND PERSONALLY
SUPERINTENDED THE SURVEY REPRESENTED BY THIS
PLAN AND THAT THE SURVEY AND PLAN ARE CORRECT.
THE SURVEY WAS COMPLETED ON THE 1st DAY OF
MAY, 1987.

V. Bartell
V. BARTELL, B.C.L.S.

BOOK OF REFERENCE	
Description	Area
LOT 9, PLAN 16198	179.1 m ²

THIS PLAN LIES WITHIN THE FRASER FORT
GEORGE REGIONAL DISTRICT.

McWILLIAM, WHYTE, GOBLE, & ASSOCIATES,
B.C. LAND SURVEYORS,
PRINCE GEORGE - KAMLOOPS - SMITHERS - SALMON ARM.

REF. NO. 87041 (D.L. 2422)