

26-FF

REFERENCE PLAN OF WELL EASEMENT
ON LOT C, PLAN 21898,
DISTRICT LOT 2422,
CARIBOO DISTRICT.

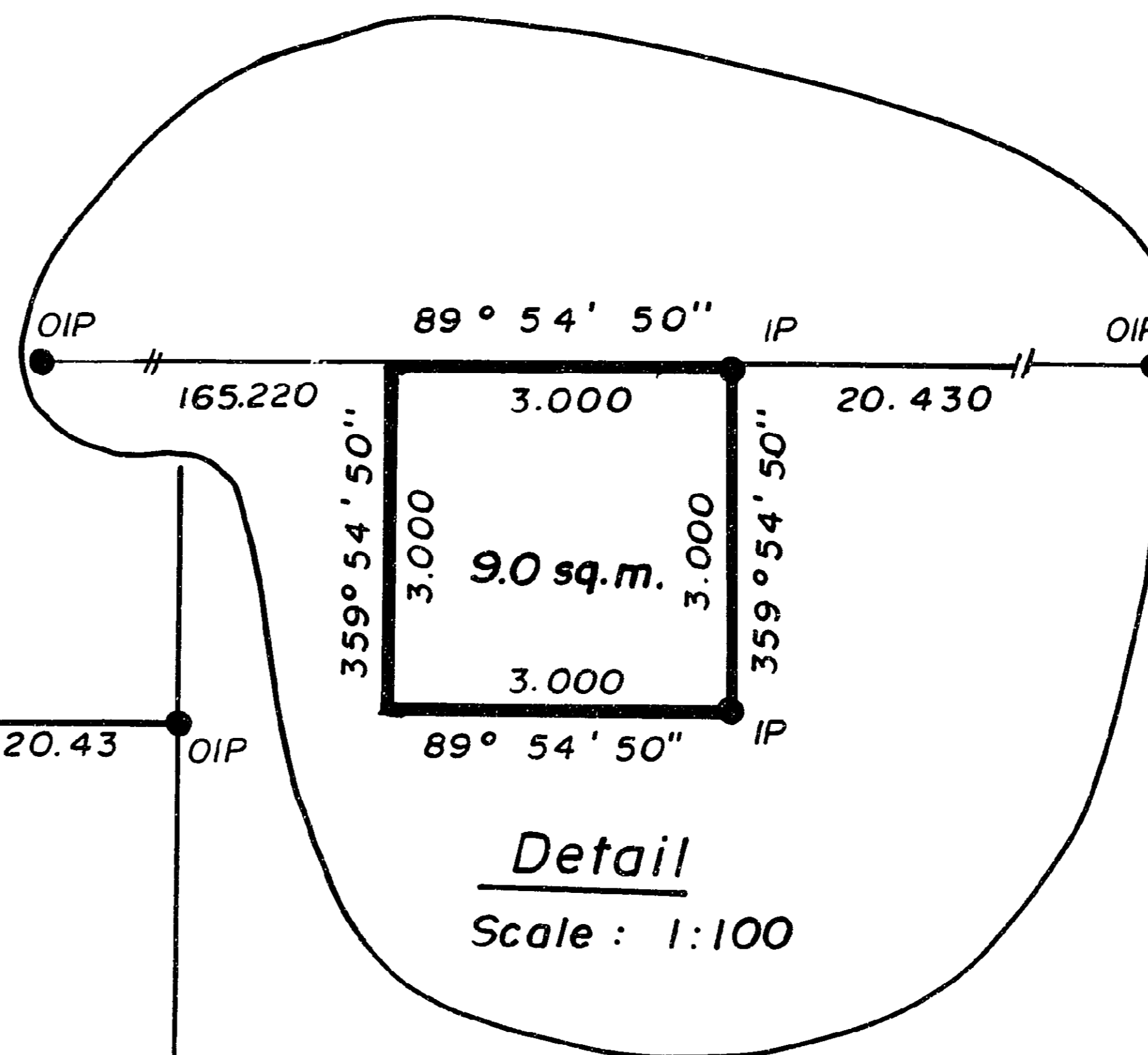
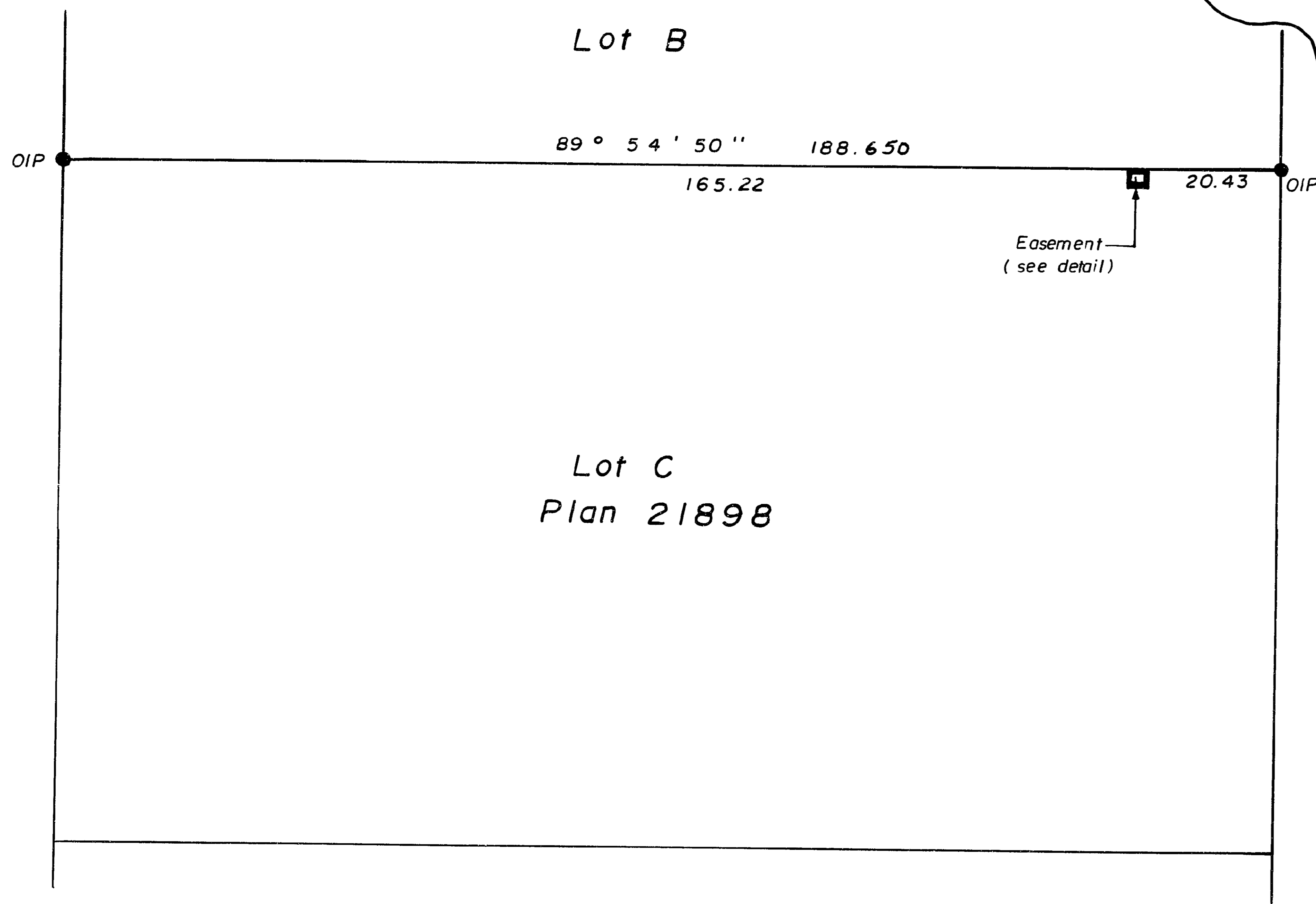
SCALE : 1 : 1000 (Distances are in metres)



Legend

Bearings are astronomic derived from Plan 21898

- IP.....Standard Iron Post.
- O.....Denotes "old"



PLAN NO. 32125

Deposited in the Land Title Office at
Prince George this 26 day of March
1987.

--- "W. G. Sandy" /ek
Registrar

I, G. Kilbride, a British Columbia Land Surveyor,
of Prince George in British Columbia, certify
that I was present at and personally
superintended the survey represented by
this plan and that the survey and plan
are correct. The survey was completed on
the 18th day of March, 1987.

Gordon Kilbride
G. Kilbride, B.C. L.S.

Book of Reference	
Description	Area
Lot C, Plan 21898	9.0 sq.m.

This plan lies within the Fraser
Fort George Regional District.

Kilbride & Associates,
(formerly Ushers)
B.C. Land Surveyors,
Prince George — B.C.

Ref. No. 15426 QD 50