

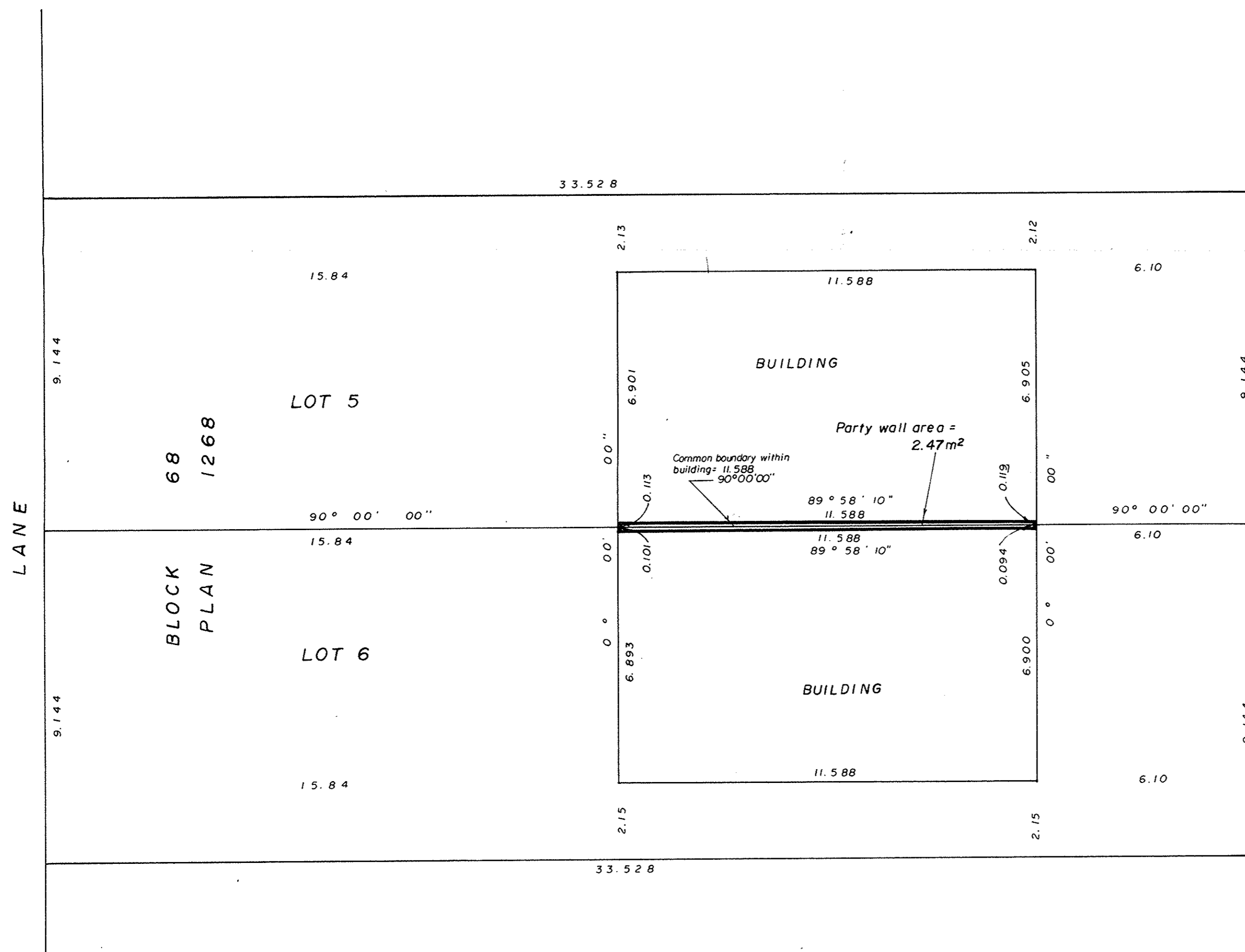
EXPLANATORY PLAN  
 TO ACCOMPANY A PARTY WALL AGREEMENT  
 OF THE PART WALL OF THE BUILDINGS ON  
 THE COMMON BOUNDARY BETWEEN LOT 5  
 AND 6, OF BLOCK 68, PLAN 1268,  
 DISTRICT LOT 343, CARIBOO DISTRICT.

PLAN NO. 32101

DEPOSITED IN THE LAND TITLE OFFICE AT PRINCE  
 GEORGE THIS 10 DAY OF MARCH 1987.

W.G.G.  
 REGISTRAR

Scale: 1:100 (DISTANCES ARE IN METRES)



WAINWRIGHT STREET

LANE

CERTIFIED CORRECT  
 THIS 5th DAY OF FEBRUARY, 1987.

*V. Bartell*  
 V. BARTELL, B.C.L.S.

THIS PLAN LIES WITHIN THE FRASER FORT  
 GEORGE REGIONAL DISTRICT.

Mc WILLIAM, WHYTE, GOBLE, & ASSOCIATES,  
 B. C. LAND SURVEYORS,  
 PRINCE GEORGE-KAMLOOPS-SMITHERS-SALMON ARM.  
 REF. NO. 87007