

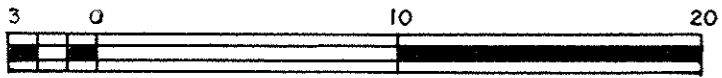
REFERENCE PLAN PURSUANT TO CITY OF PRINCE GEORGE BYLAW #4785 CLOSING ROAD ADJACENT TO LOT 69, PLAN 20375, AND LOT 25, PLAN 19441, DISTRICT LOT 8178, CARIBOO DISTRICT.

PLAN 32032 62

Deposited in the Land Title Office at Prince George, B.C. this 10 day of Feb 1987

REGISTRAR *WJ*

SCALE 1:250



LEGEND

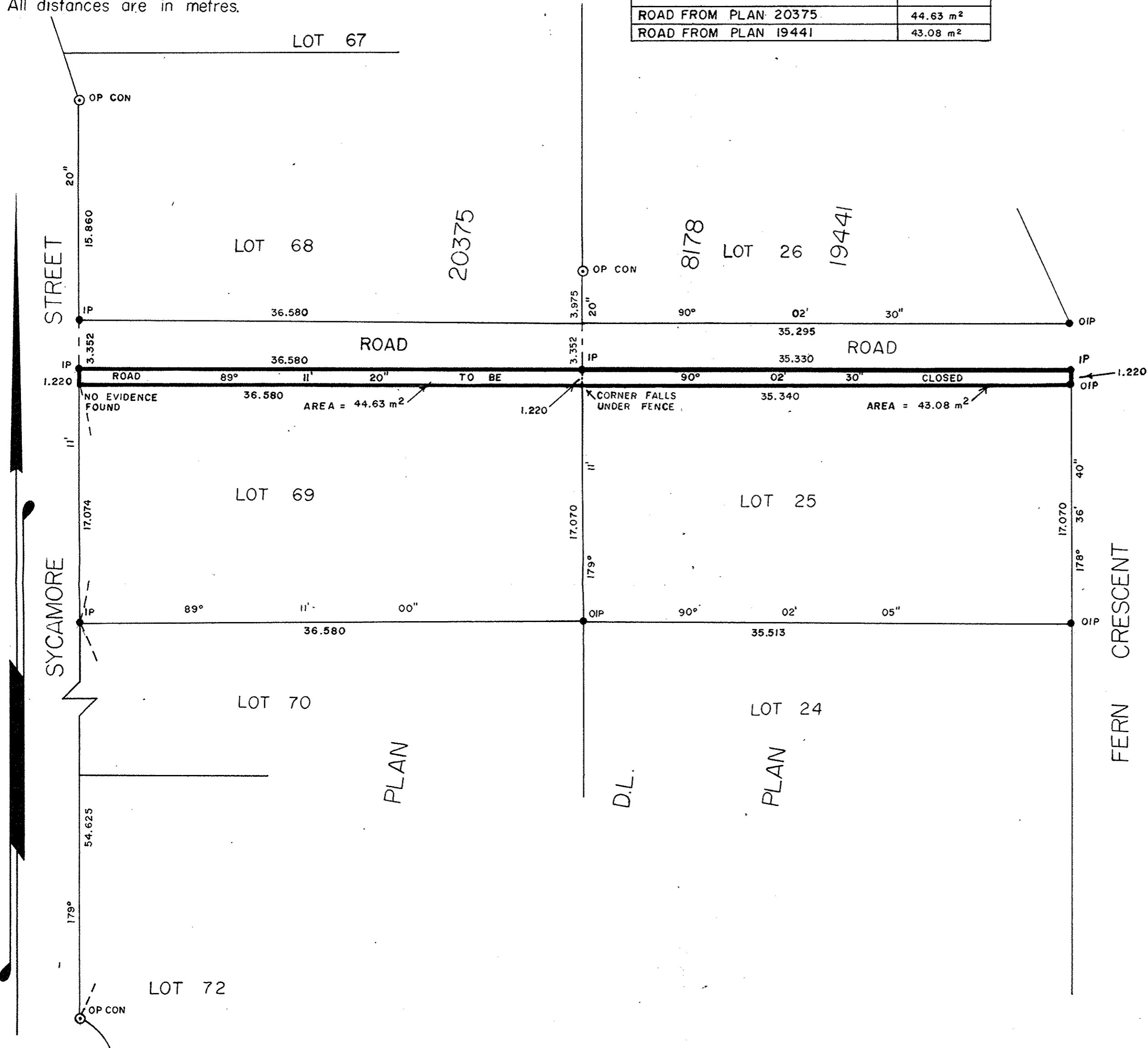
Bearings are astronomic derived from Plan 20375 (N 0° 48' 40" W)

- ⊙ OP CON Denotes old concrete post found
- OIP Denotes old iron post found
- IP Denotes iron post found

All distances are in metres.

BOOK OF REFERENCE

DESCRIPTION	AREA
ROAD FROM PLAN 20375	44.63 m ²
ROAD FROM PLAN 19441	43.08 m ²



Approved under the Land Title Act this 5th day of JANUARY 1987

P. E. Gook
Approving Officer - City of Prince George

This plan lies within the Fraser - Fort George Regional District.

I, Harry E. Hickman, a British Columbia land surveyor, of the city of Quesnel, in British Columbia, certify that I was present at and personally superintended the survey represented by this plan, and that the survey and plan are correct. The survey was completed on the 23rd day of April, 1986.

Harry E. Hickman
B.C.L.S.

HICKMAN & GOOK
B.C. LAND SURVEYORS
691 FRONT STREET
QUESNEL, B.C. V2J 2K9
PHONE 992-2424

FILE: 86-1204 PG
412 - 1488 4th Ave.
Prince George, B.C.
Phone: 562-4458

32032