

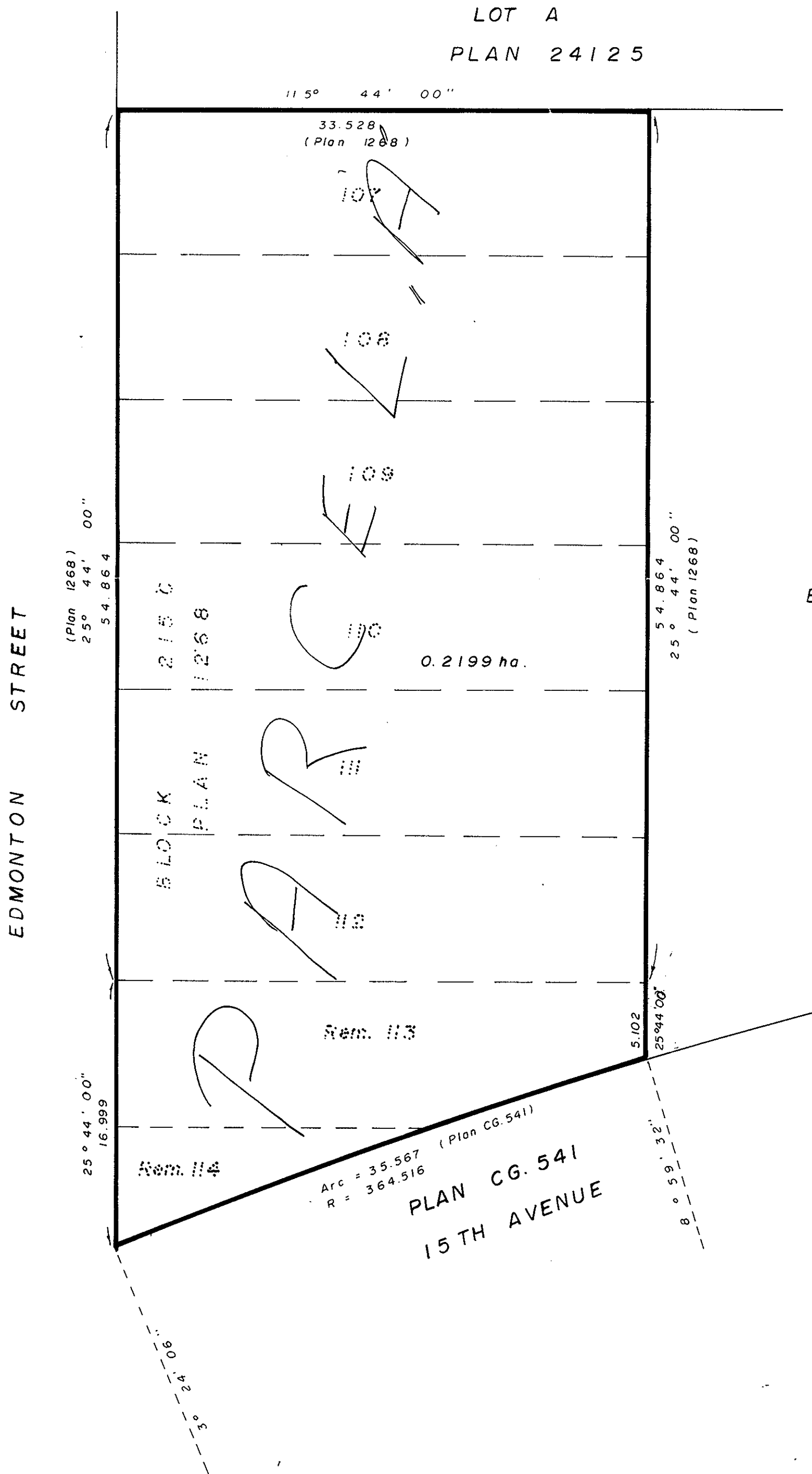
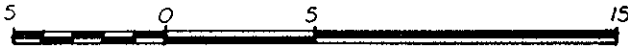
EXPLANATORY PLAN TO CONSOLIDATE
LOTS 107, 108, 109, 110, 111, 112 and
LOTS 113 and 114, EXCEPT PLAN C.G. 541,
ALL OF BLOCK 215C, PLAN 1268, D.L. 343,
CARIBOO DISTRICT.

PLAN NO. 32030

DEPOSITED IN THE LAND TITLE OFFICE AT PRINCE GEORGE
THIS 10 DAY OF FEBRUARY 1987.

W. G. G.
REGISTRAR

Scale : 1 : 250 (DISTANCES ARE IN METRES)



REM. LOT X3
BLOCK 215C

CERTIFIED CORRECT
ACCORDING TO LAND TITLE OFFICE RECORDS
THIS 14th DAY OF JANUARY, 1987.

Vicki Bartell
V. BARTELL, B.C.L.S.

THIS PLAN LIES WITHIN THE FRASER FORT
GEORGE REGIONAL DISTRICT.

McWILLIAM, WHYTE, GOBLE, & ASSOCIATES,
B.C. LAND SURVEYORS,
PRINCE GEORGE-KAMLOOPS-SMITHERS-SALMON ARM

REF. NO. 87002

Blk 215C, D.L. 343.