

26-FF-226

REFERENCE PLAN OF EASEMENTS IN REM. LOT 1, PLAN 31724 and LOT A, PLAN 31959, D.L.4047, CARIBOO DISTRICT.

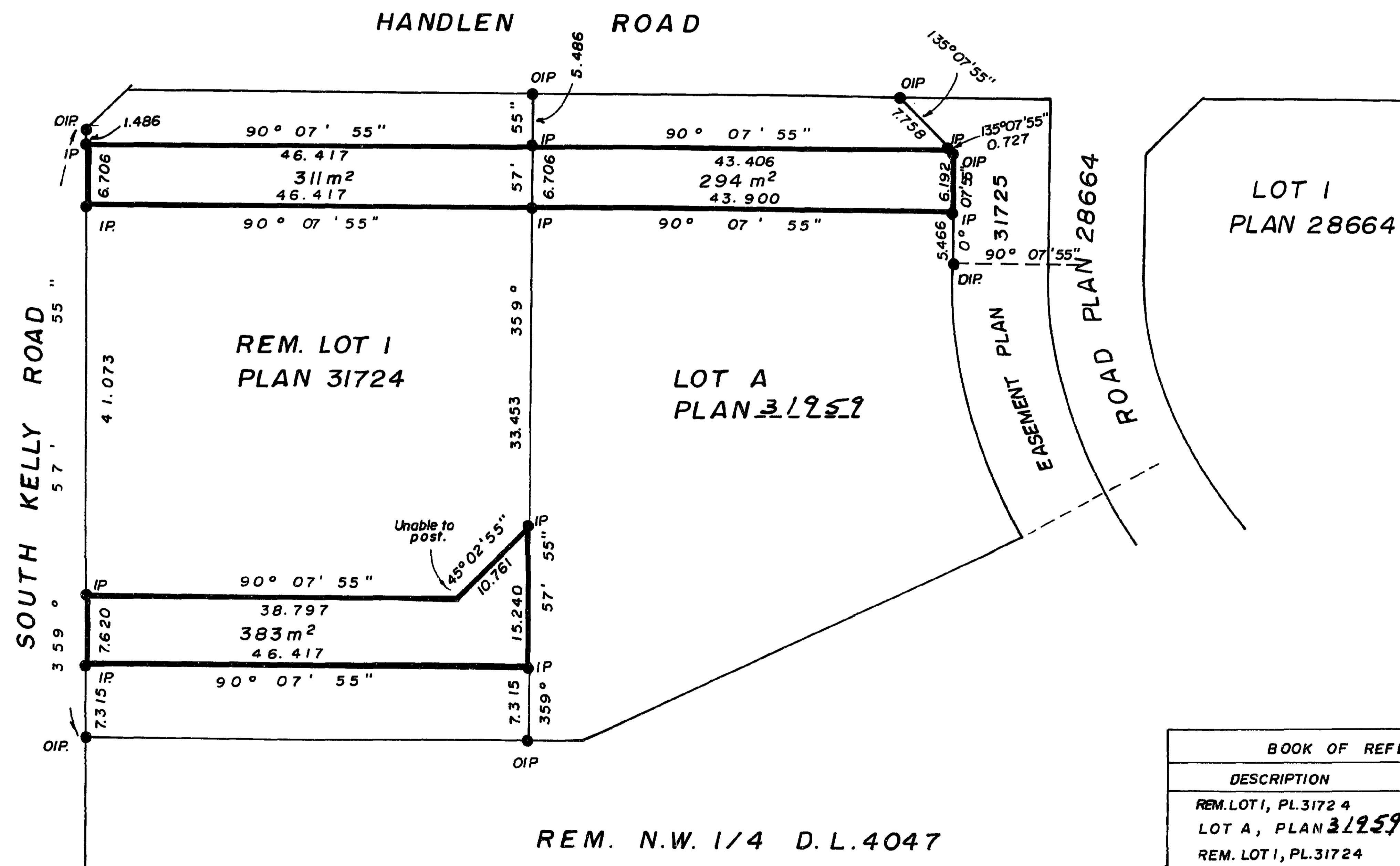
Scale : 1:500 (ALL DISTANCES ARE IN METRES)



PLAN NO. 31960

DEPOSITED IN THE LAND TITLE OFFICE AT PRINCE
GEORGE THIS 24 DAY OF November 1986.

W. A. Dandy
REGISTRAR



BEARINGS ARE ASTRONOMIC DERIVED FROM
PLAN 31724.

- IP.....STANDARD IRON POST.
-DENOTES "OLD"

I, V. BARTELL, A BRITISH COLUMBIA LAND SURVEYOR
OF PRINCE GEORGE IN BRITISH COLUMBIA, CERTIFY THAT
I WAS PRESENT AT AND PERSONALLY SUPERINTENDED THE
SURVEY REPRESENTED BY THIS PLAN AND THAT THE SURVEY
AND PLAN ARE CORRECT. THE SURVEY WAS COMPLETED ON
THE 26 DAY OF NOVEMBER, 1986.

V. Bartell
V. BARTELL, B.C.L.S.

BOOK OF REFERENCE	
DESCRIPTION	AREA
REM. LOT 1, PL. 31724	311 m ²
LOT A, PLAN 31959	294 m ²
REM. LOT 1, PL. 31724	383 m ²

THIS PLAN LIES WITHIN THE FRASER FORT
GEORGE REGIONAL DISTRICT.

McWILLIAM, WHYTE, GOBLE, & ASSOCIATES,
B.C. LAND SURVEYORS,
PRINCE GEORGE-KAMLOOPS-SMITHERS-SALMON ARM
REF. NO. 86012 (1100)