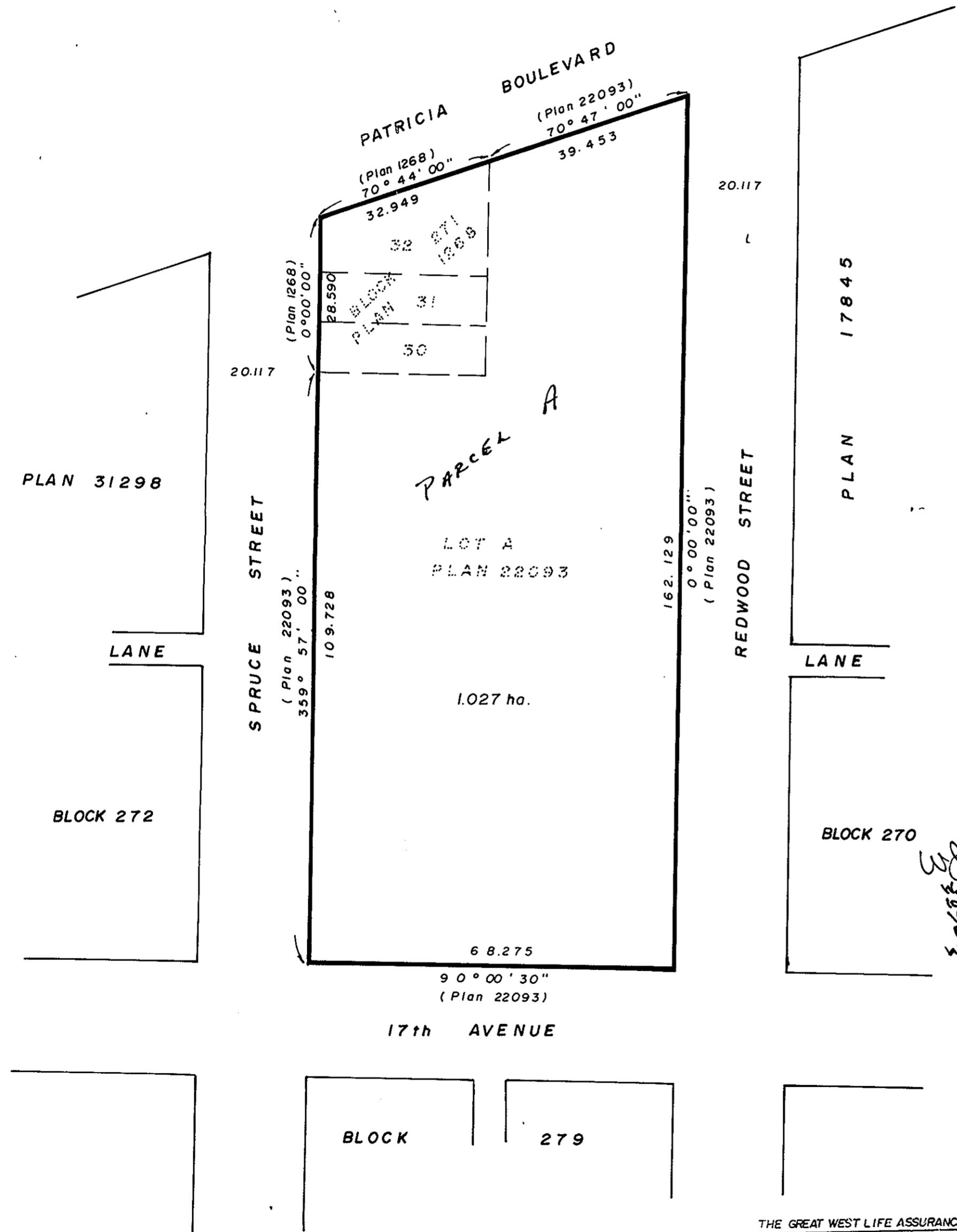


22

PLAN NO. 31957

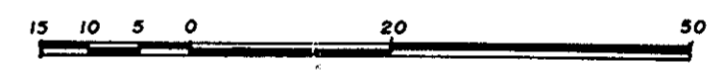
DEPOSITED IN THE LAND TITLE OFFICE AT  
PRINCE GEORGE THIS 23 DAY OF Dec 1986.

W6  
REGISTRAR



EXPLANATORY PLAN TO CONSOLIDATE  
LOTS 30, 31 and 32 OF BLOCK 271,  
PLAN 1268, AND LOT A, PLAN 22093,  
DISTRICT LOT 343, CARIBOO DISTRICT.

SCALE : 1 : 750 ( DISTANCES ARE IN METRES )



CERTIFIED CORRECT  
ACCORDING TO LAND TITLE OFFICE RECORDS  
THIS 7 DAY OF NOVEMBER, 1986.

THE ROYAL BANK OF CANADA  
As to mortgage U33931 by its lawful Attorneys:

*[Signature]*  
R.D. Stitt, Senior Assistant Manager, Commercial Lending

*[Signature]*  
VICTOR BARTELL B.C.L.S.

AUTHORIZED SIGNATORIES.  
G.B. Calkowski, Senior Assistant Manager, Commercial Lending

OWNER: WESTMINSTER MANAGEMENT CORPORATION  
(Incorporation # 8398)

THE ROYAL BANK OF CANADA  
As to mortgage Y29947 by its lawful Attorneys:

*[Signature]*  
R.D. Stitt, Senior Assistant Manager, Commercial Lending

*[Signature]*  
AUTHORIZED SIGNATORIES

AUTHORIZED SIGNATORIES.  
G.B. Calkowski, Senior Assistant Manager, Commercial Lending

THE GREAT WEST LIFE ASSURANCE COMPANY  
As to mortgage K32855

*[Signature]*  
SARA MARTENS, AUTHORIZED SIGNATURE  
*[Signature]*  
M.E. McLEOD, MANAGER, MORTGAGE ADMINISTRATION

THIS PLAN LIES WITHIN THE FRASER FORT  
GEORGE REGIONAL DISTRICT.

McWILLIAM, WHYTE, GOBLE & ASSOCIATES.  
B.C. LAND SURVEYORS,  
PRINCE GEORGE-KAMLOOPS-SMITHERS-SALMON ARM.  
REF. NO. 86086