

EXPLANATORY PLAN OF STATUTORY
RIGHT OF WAY OVER PART OF LOT 1

DISTRICT LOT 753 PLAN 30349

CARIBOO DISTRICT

NL 256 226 - 90 - 08742 .105

PURSUANT TO HYDRO & POWER AUTHORITY ACT
RSBC 1979 CHAPTER 188.

SCALE ~ 1:250



ALL DISTANCES ARE IN METRES

BEARINGS ARE ASTRONOMIC DERIVED FROM PLAN 30349.

R/W REQUIRED FOR PURPOSES OF OVERHEAD DISTRIBUTION
OF ELECTRICAL POWER.

AREA REQUIRED = 47.09 SQUARE METRES.

PLAN 31945

DEPOSITED IN THE LAND TITLE
OFFICE AT PRINCE GEORGE B.C.

THIS 18 DAY OF December 1986

W.G.G.

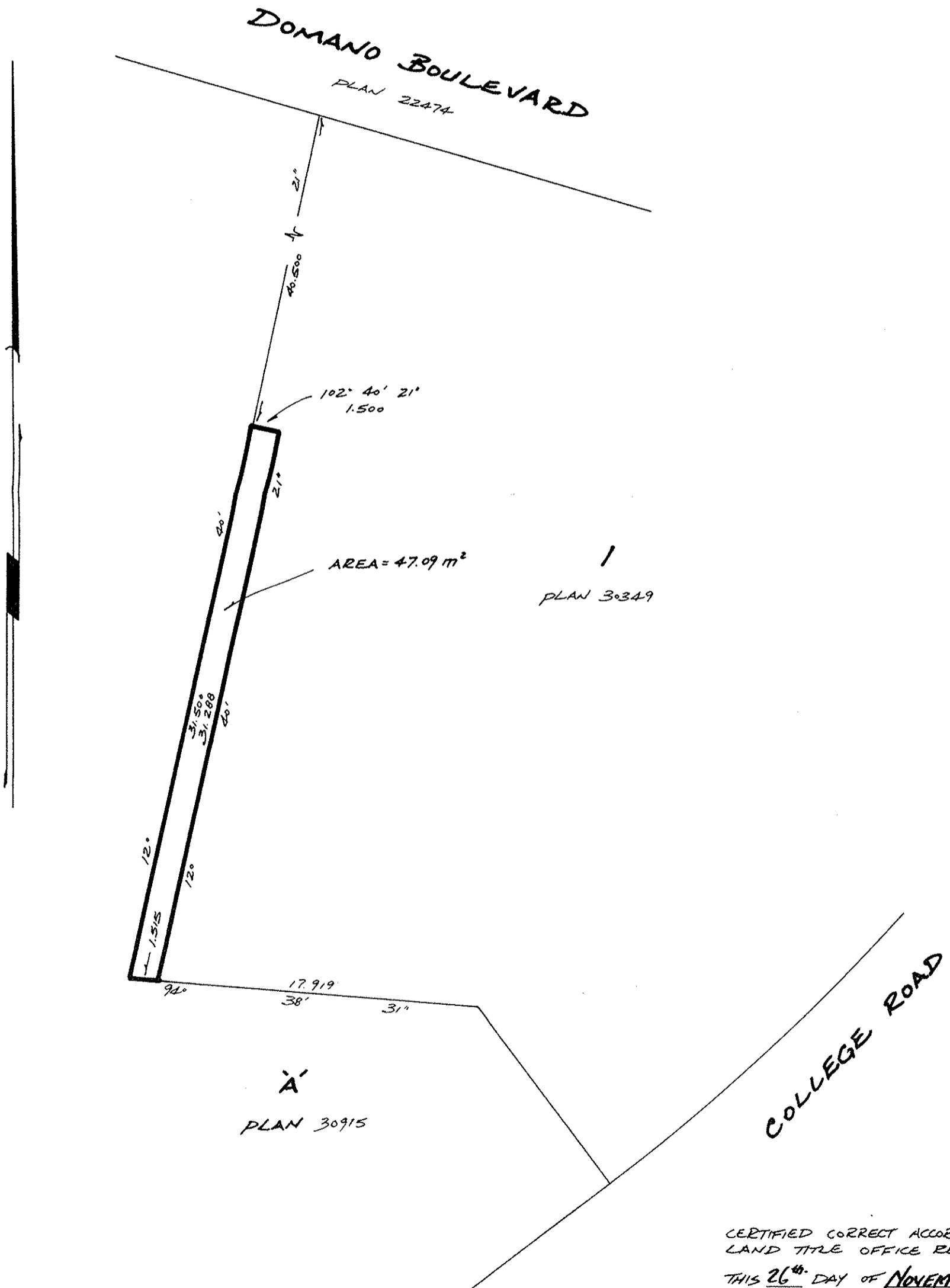
REGISTRAR

PURSUANT TO SECTION 99(1)(c) OF
THE LAND TITLE ACT.

RECEIVED
DEC 30 1986

B.C. ASSESSMENT
AUTHORITY

THIS PLAN LIES WITHIN THE
PRINCE GEORGE REGIONAL DISTRICT.



LEGAL SURVEY SECTION
B.C. HYDRO & P.A.
8650 - 124th ST.
SURREY, B.C.

CERTIFIED CORRECT ACCORDING TO
LAND TITLE OFFICE RECORDS
THIS 26th DAY OF NOVEMBER, 1986.

J.W. Powers
B.C.L.S.