

PLAN NO. 31898
 Deposited in the Land Title Office at
 Prince George this 7 day of
November 1986.

PLAN OF SUBDIVISION OF
 PART OF REMAINDER OF N.E. 1/4 OF
 DISTRICT LOT 1599, CARIBOO DISTRICT.

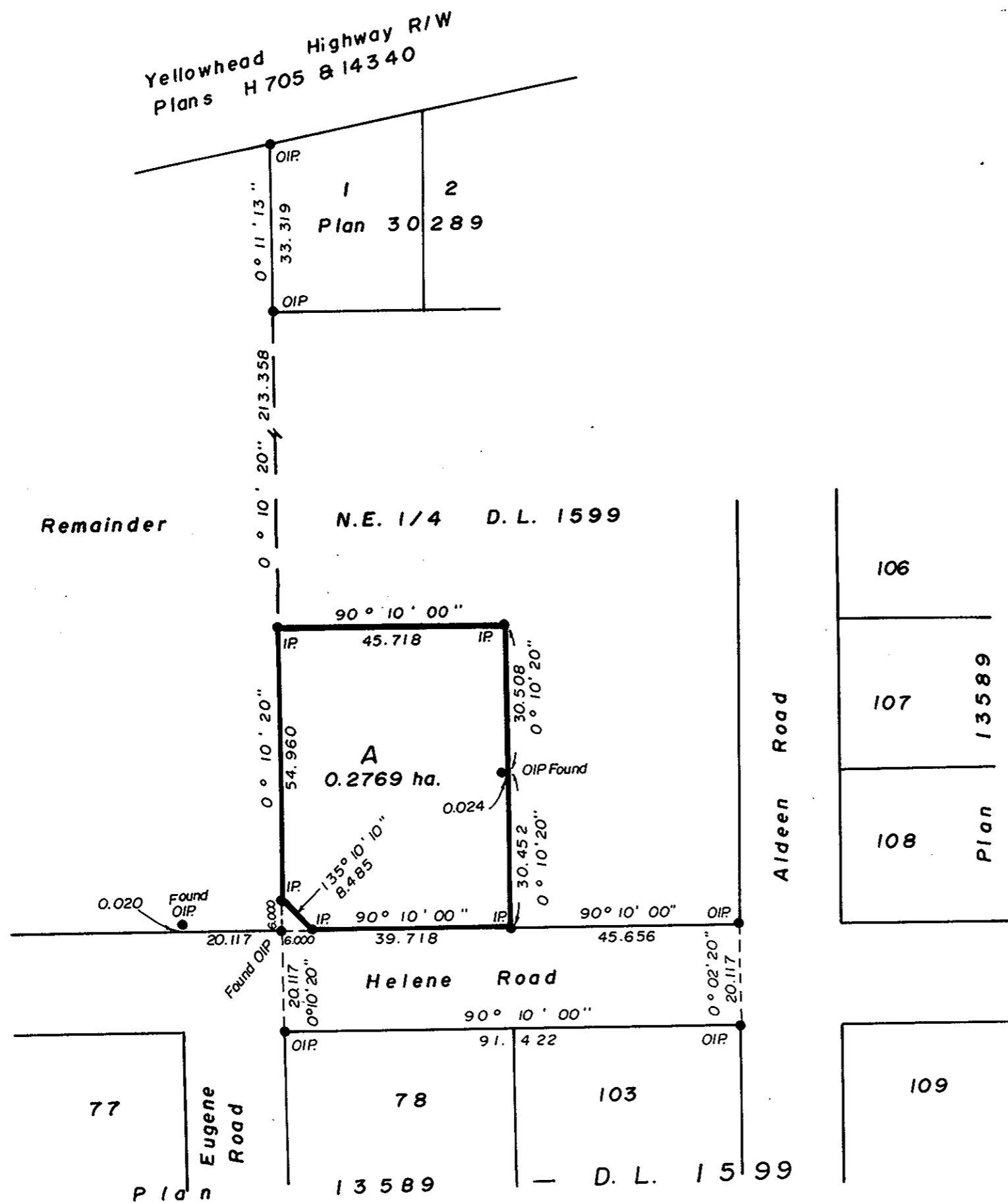
SCALE : 1 : 1000 (DISTANCES ARE IN METRES)



Bearings are astronomic derived from the South bdy.
 of Helene Road, Plan 13589.

• IP.....Standard Iron Post.
 O.....Denotes old.

W.C.G.
 Registrar



I, G. Kilbride, a British Columbia Land Surveyor, of Prince George in British Columbia certify that I was present at and personally superintended the survey represented by this plan, and that the survey and plan are correct. The survey was completed on the 28 day of April, 1986.

Gordon Kilbride
 G. Kilbride, B.C.L.S.

Approved under the Land Title Act
 this 26th day of September 1986.

Palleone
 Approving Officer
 City of Prince George

Owner : The Royal Bank of Canada
 by its Lawful Attorneys. BY THEIR
 ATTORNEYS IN
 FACT:

[Signature]
 R. B. THOMAS
 MANAGER - LEADING SERVICES

RODOLD REYNOLDS
 MANAGER - LEADING SERVICES

Mary E. Copeland
 M. E. COPELAND
 4034 OSGOOD PLACE
 VICTORIA, B.C.
 SURVEYOR
 (WITNESS AS TO BOTH
 SIGNATURES)

This plan lies within the Fraser Fort
 George Regional District.

W.D. Usher & Associates
 B.C. Land Surveyors,
 Prince George — B.C.

File No. 15113 QG 2