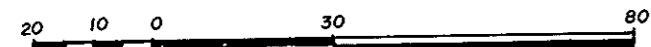


PLAN OF SUBDIVISION OF  
 LOT A PLAN 11923,  
 DISTRICT LOT 343, CARIBOO DISTRICT.

SCALE: 1:1250 (Distances are in metres.)



Bearings are astronomic derived from  
 north bdy. Lot A, Plan 11923

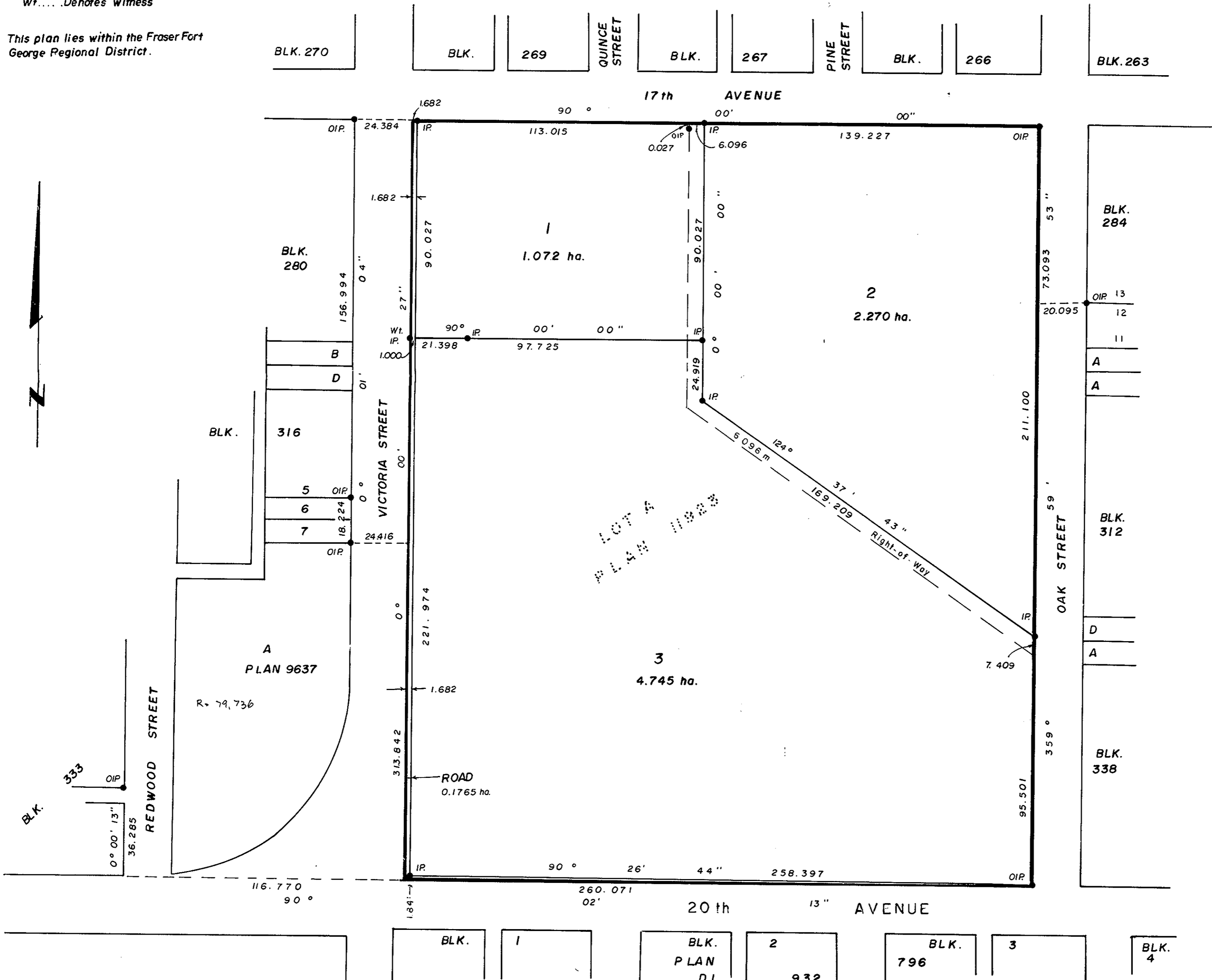
- IP..... Standard Iron Post
- ..... Denotes old
- Wt..... Denotes witness

This plan lies within the Fraser Fort  
 George Regional District.

PLAN NO. 31887

Deposited in the Land Title Office at  
 Prince George this 31<sup>st</sup> day of  
 Oct 1986

Registrar *wb*



I, G. Kilbride, a British Columbia Land Surveyor,  
 of Prince George in British Columbia certify that  
 I was present at and personally superintended  
 the survey represented by this plan and that the  
 survey and plan are correct. The survey was  
 completed on the 16th day of December, 1985.

*G. Kilbride*  
 G. Kilbride B.C.L.S.

Approved under the Land Title Act  
 this 31<sup>st</sup> day of JAN 1986

*P. E. Groat*  
 Approving Officer  
 City of Prince George.  
 Reapproved May 7th 1986  
 Reapproved Oct 16th 1986  
*P. Keane*  
 Board of Trustees  
 School District 57

Authorized Signatories.

W.D. Usher & Associates.  
 B.C. Land Surveyors  
 Prince George, B.C.  
 Ref. 14994-1 QA

W 29.1.76