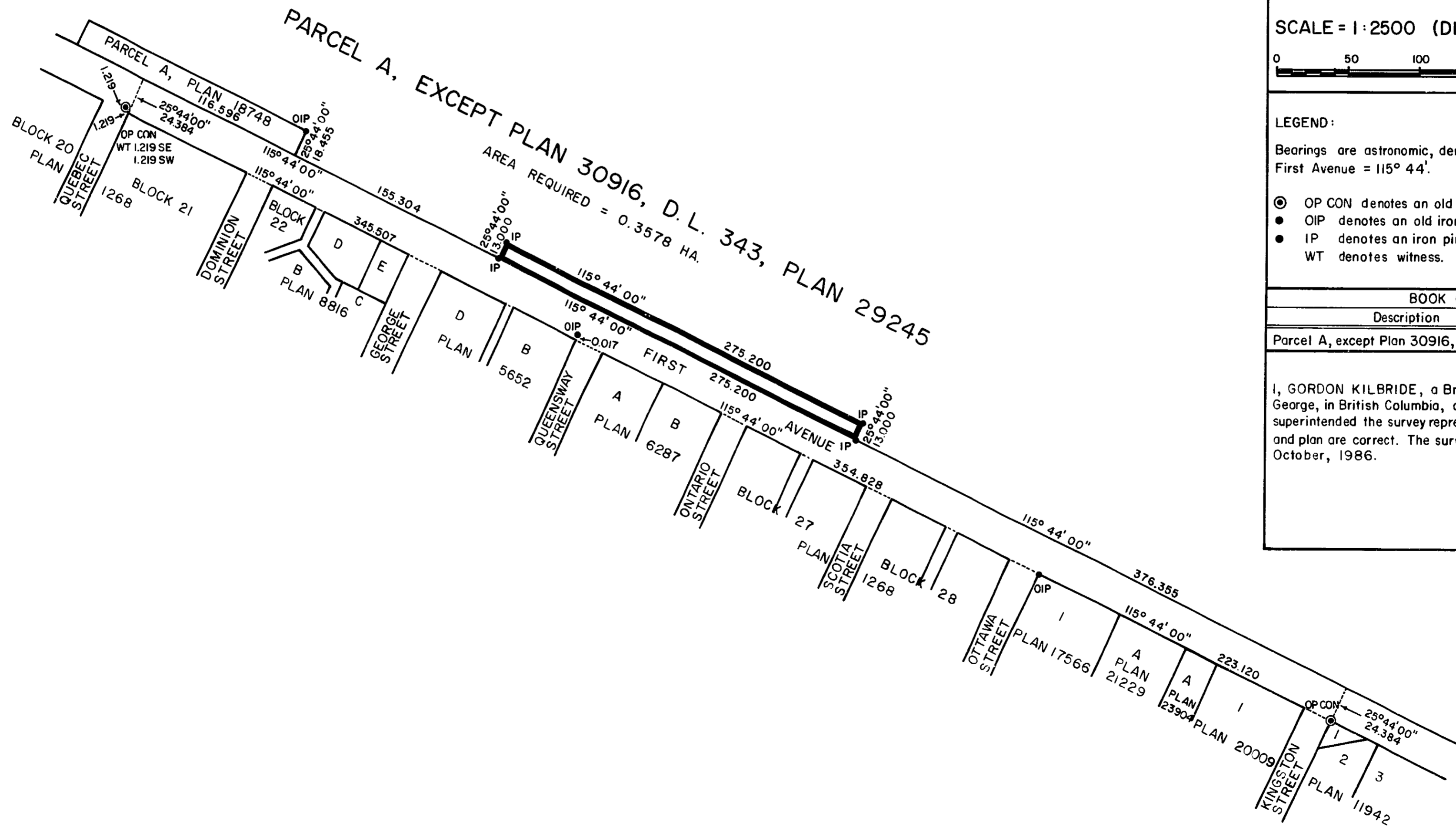


26-FF-226

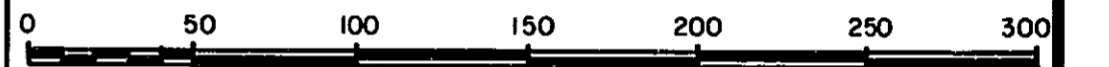


PLAN N^o 31841
 Deposited in the Land Title Office at Prince George, B.C.
 this 17 day of October, 1986
 W. D. Ushey per: J Registrar

CANADIAN NATIONAL RAILWAY COMPANY

PLAN OF STATUTORY RIGHT-OF-WAY IN
 PARCEL A, EXCEPT PLAN 30916,
 DISTRICT LOT 343, CARIBOO
 DISTRICT, PLAN 29245

SCALE = 1 : 2500 (DISTANCES ARE IN METRES)



LEGEND:

Bearings are astronomic, derived from Plan 1268,
 First Avenue = 115° 44'.

- ⊙ OP CON denotes an old concrete monument found.
- OIP denotes an old iron pin found.
- IP denotes an iron pin set.
- WT denotes witness.

BOOK OF REFERENCE

Description	Area Required
Parcel A, except Plan 30916, D.L. 343, Plan 29245	0.3578 ha.

I, GORDON KILBRIDE, a British Columbia Land Surveyor, of Prince George, in British Columbia, certify that I was present at and personally superintended the survey represented by this plan and that the survey and plan are correct. The survey was completed on the 9th day of October, 1986.

Gordon Kilbride

This plan lies within the Fraser - Fort George Regional District.