

EXPLANATORY PLAN OF LEASE
 OF PART OF MAIN FLOOR OF A BUILDING ON
 AMENDED LOT A (84026M), PLAN 13541,
 DISTRICT LOT 343, CARIBOO DISTRICT.

SCALE : 1:500 (DISTANCES ARE IN METRES)



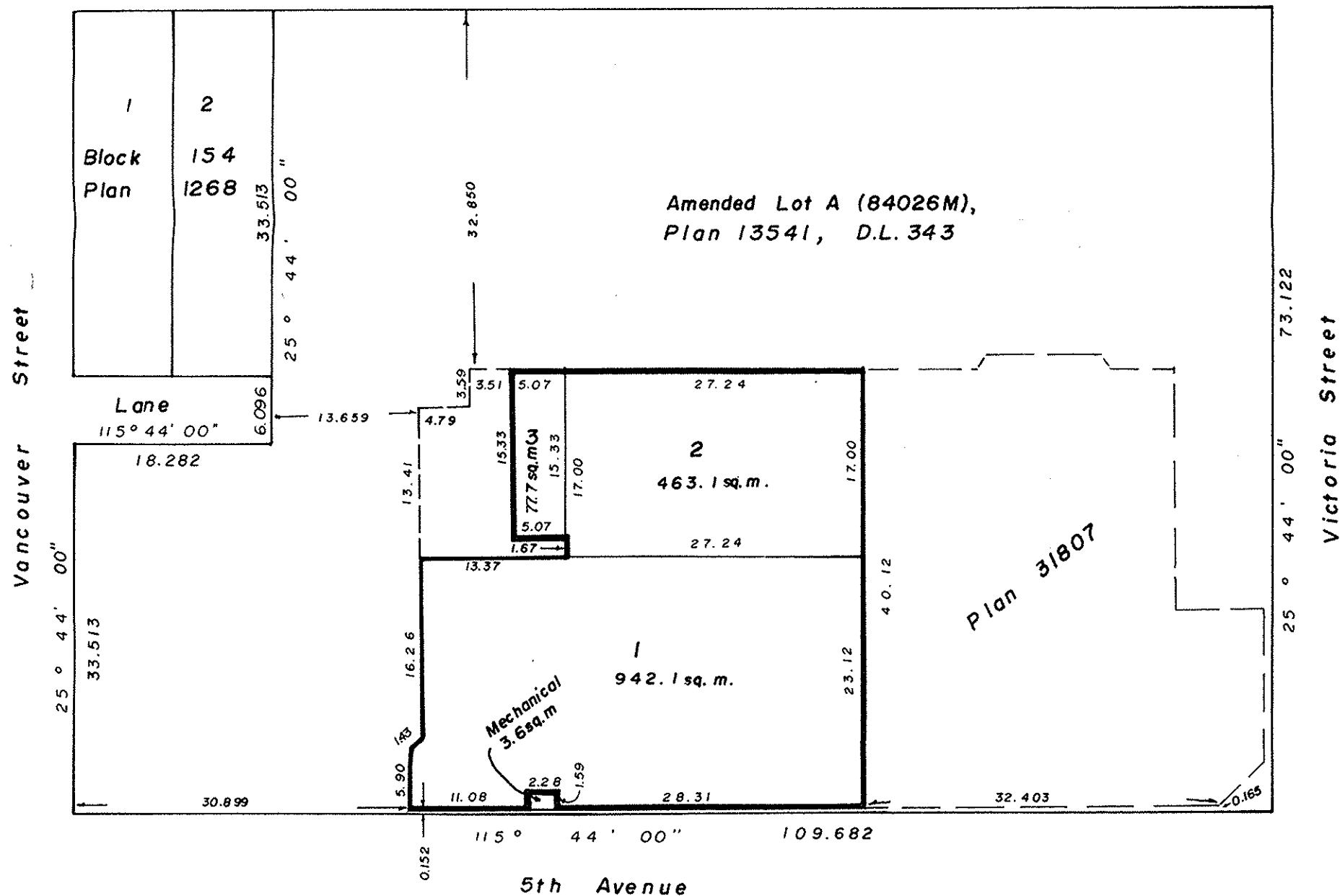
Bearings are astronomic, derived from Plan 13541.

PLAN NO. 31816
 Deposited in the Land Title Office at
 Prince George this 2 day of Oct
 1986.

W.D. Gandy / dg
 Registrar

4th Avenue

115° 44' 00" 91.400



CERTIFIED CORRECT
 this 15th day of September, 1986.

Gordon Kilbride
 G. Kilbride, B.C.L.S.

This plan lies within the Fraser Fort
 George Regional District.

W.D. Usher & Associates,
 B.C. Land Surveyors,
 Prince George - B.C.

Ref. No. 15238-1 QF18