

10814

31807

EXPLANATORY PLAN OF LEASE
 OF THE BASEMENT and PART OF MAIN FLOOR OF A BUILDING ON
 AMENDED LOT A (84026M), PLAN 13541
 DISTRICT LOT 343, CARIBOO DISTRICT.

PLAN NO. 31807

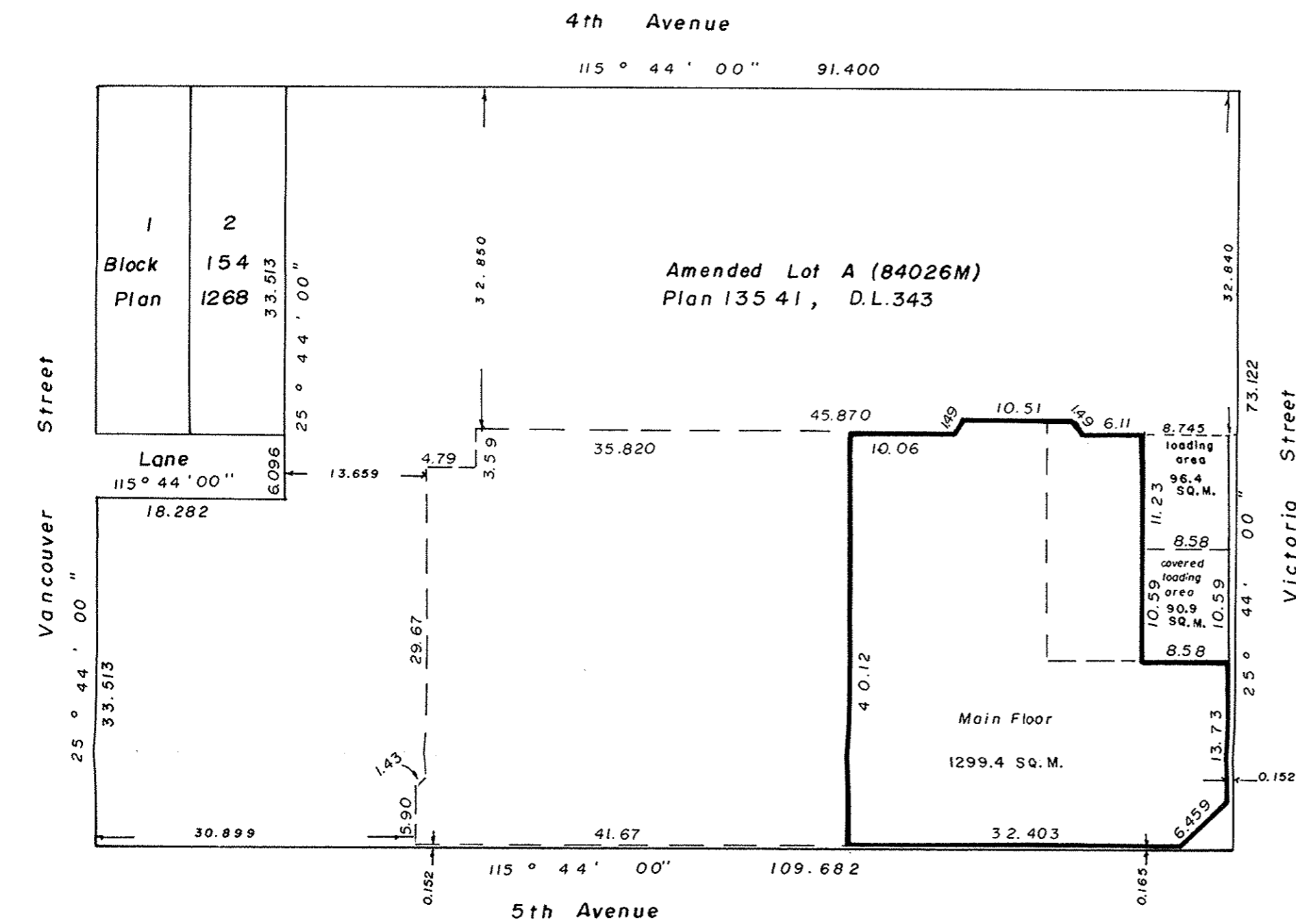
Deposited in the Land Title Office at
 Prince George this 26 day of Sept
 1986.

SCALE : 1 : 500 (DISTANCES ARE IN METRES)



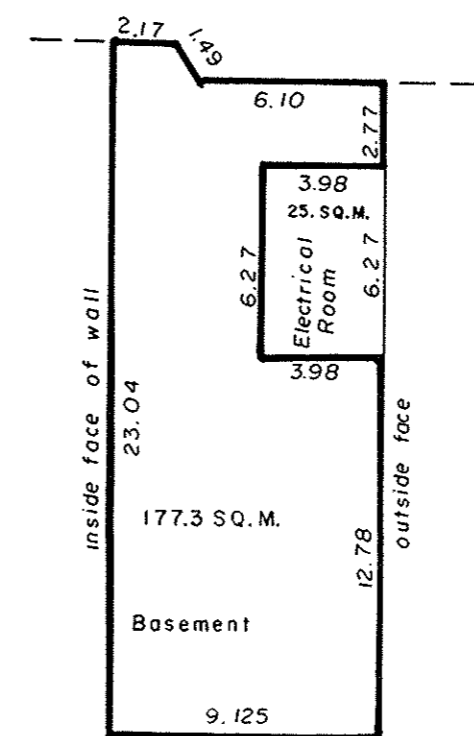
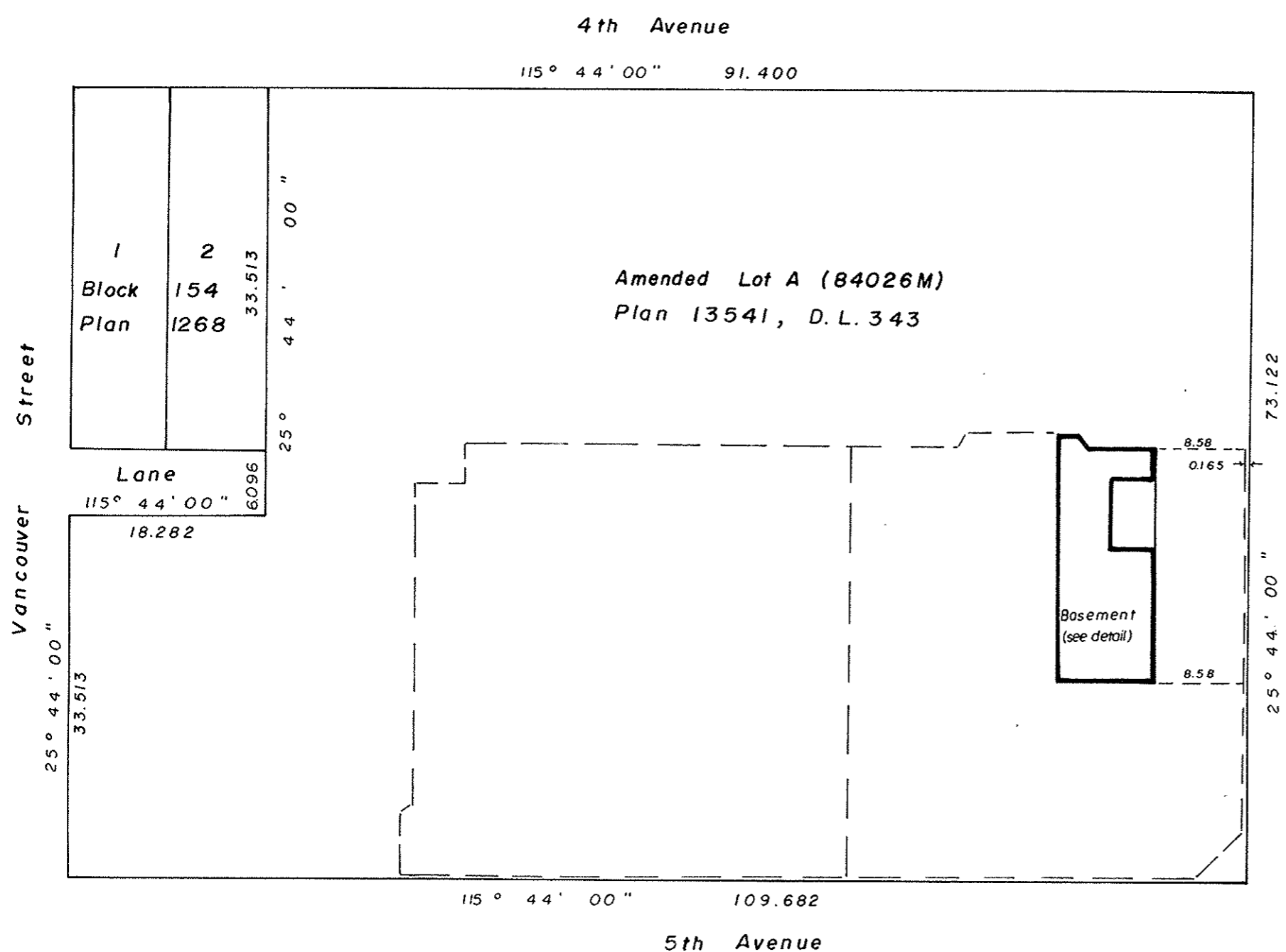
Bearings are astronomic, derived from Plan 13541.

W-66
 Registrar



CERTIFIED CORRECT
 this 28th day of July, 1986.

Gordon Kilbride
 G. Kilbride, B.C.L.S.



Detail
 Scale: 1:250

This plan lies within the Fraser Fort
 George Regional District.

W.D.Usher & Associates,
 B.C. Land Surveyors,
 Prince George, B.C.