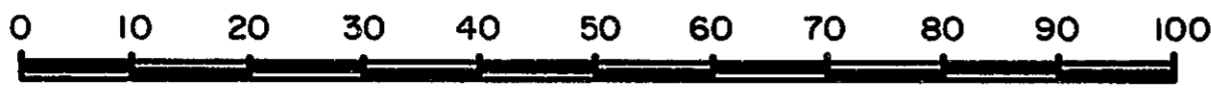


26-FF-226

EXPLANATORY PLAN OF WATER LINE EASEMENT OVER PART OF REMAINDER OF EAST 40 CHAINS OF DISTRICT LOT 2099, CARIBOO DISTRICT

SCALE = 1 : 1000



Distances are in metres

Bearings are astronomic, derived from Plan 17146.

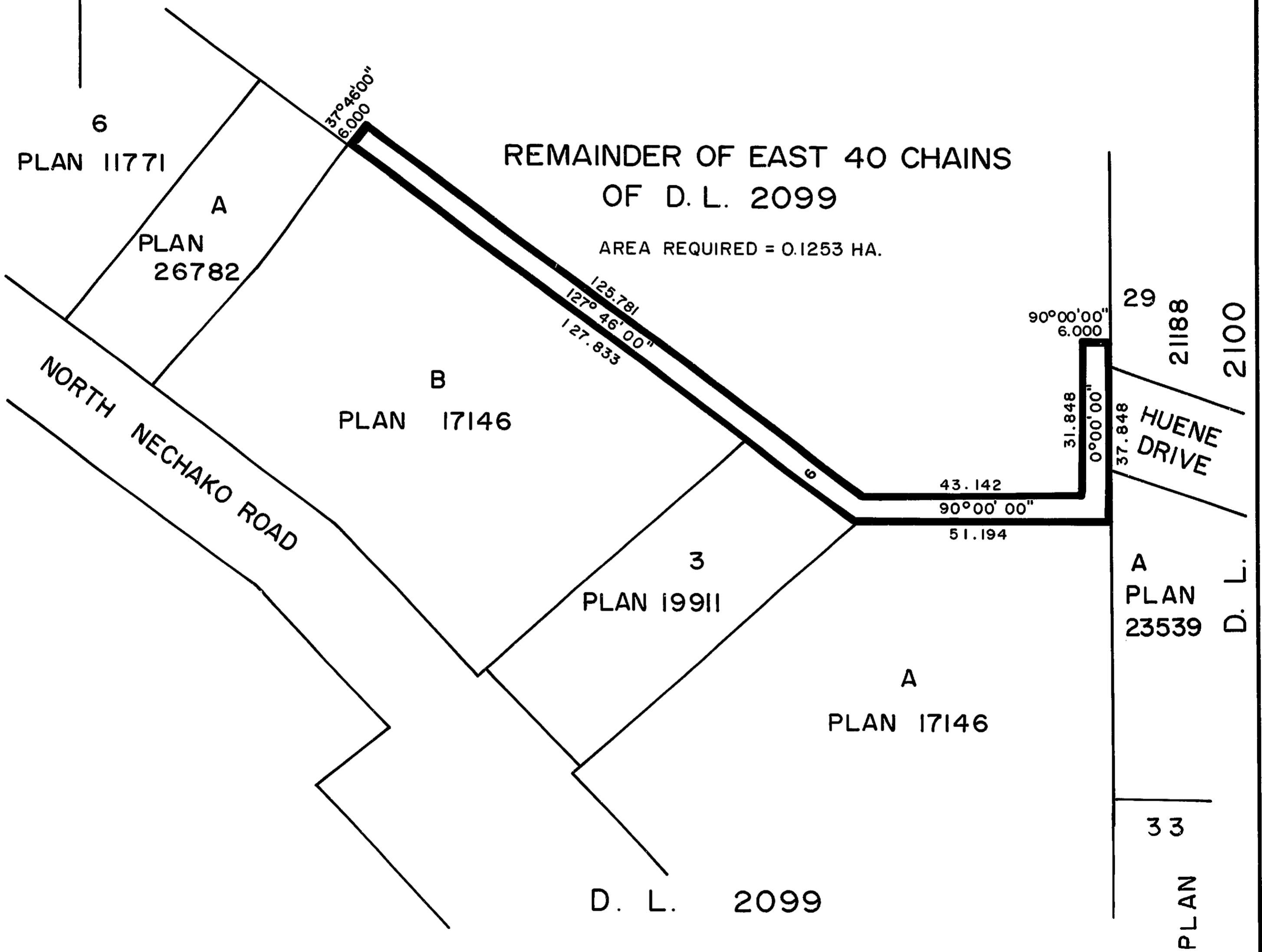
BOOK OF REFERENCE

Description	Area Required
Remainder of the East 40 Chains of District Lot 2099, Cariboo District.	0.1253 Ha.

PLAN No 31789

Deposited in the Land Title Office at Prince George, B.C. this 15th day of Sept., 1986.

W. G. Gandy / Sm
Registrar



CERTIFIED CORRECT
According to Land Title Office records this 5th day of August, 1986.

Gordon Kilbride
Gordon Kilbride, B.C.L.S.

This plan lies within the Fraser - Fort George Regional District.

W. D. USHER & ASSOCIATES
LAND SURVEYORS
PRINCE GEORGE - B.C.
15256