

REFERENCE PLAN OF WATER LINE EASEMENT IN
REMAINDER OF LOT B, DISTRICT LOT 2099,
CARIBOO DISTRICT, PLAN 17146

SCALE = 1:1000



PLAN N^o 31787
Deposited in the Land Title
Office at Prince George, B.C. this
15th day of Sept., 1986.

W. B. Gandy
Registrar

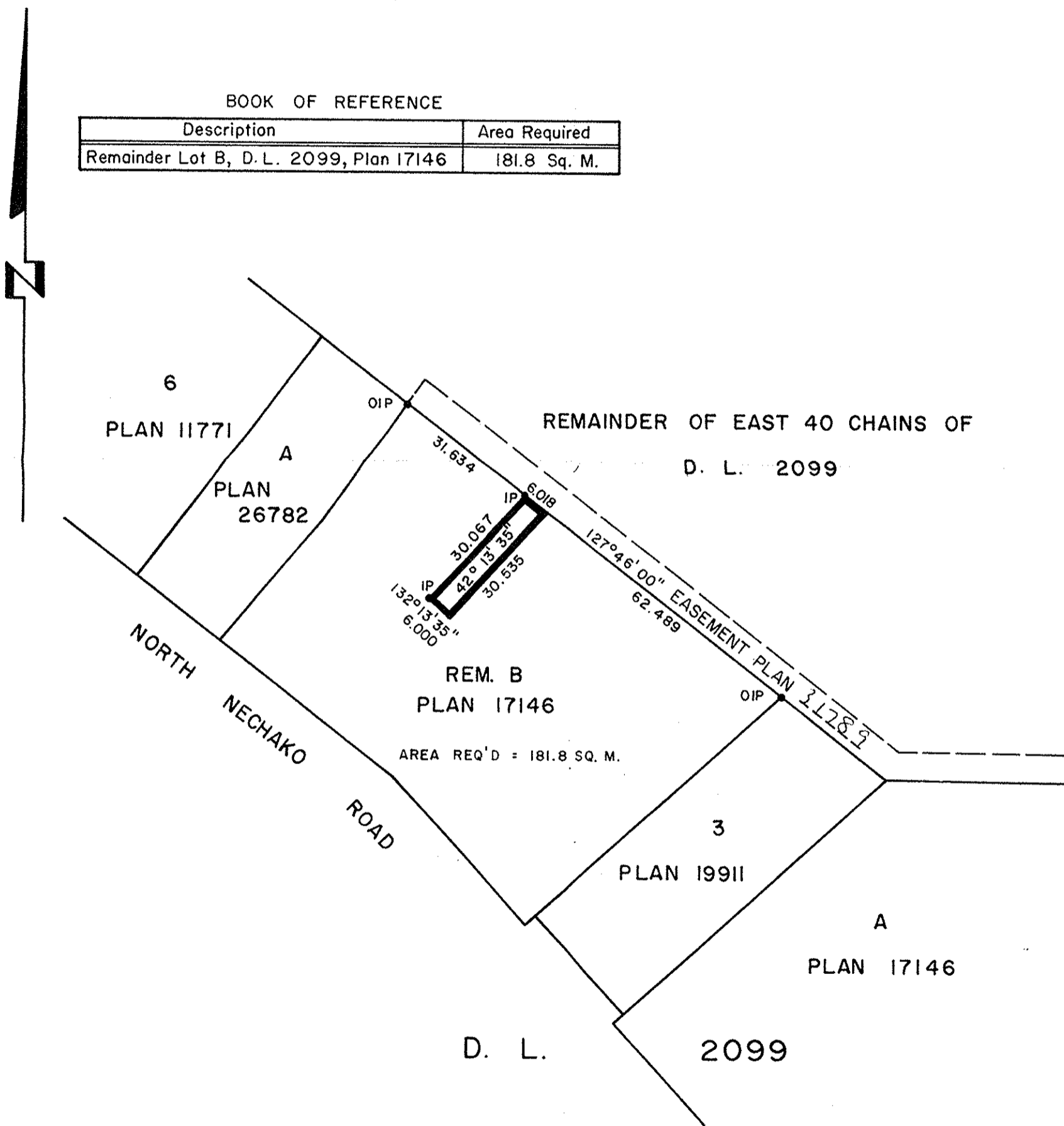
NOTE: Bearings are astronomic, derived from the
northeasterly boundary of Lot B, Plan 17146.

Distances are shown in metres.

LEGEND: ● OIP denotes an old iron pin found.
● IP denotes an iron pin set.

BOOK OF REFERENCE

Description	Area Required
Remainder Lot B, D. L. 2099, Plan 17146	181.8 Sq. M.



I, GORDON KILBRIDE, a British Columbia Land Surveyor, of Prince George, in British Columbia, certify that I was present at and did personally superintend the survey represented by this plan, and that the survey and plan are correct. The survey was completed on the 12th day of August, 1986.

Gordon Kilbride

This plan lies within the Fraser- Fort George Regional District.

W. D. USHER & ASSOCIATES
LAND SURVEYORS
PRINCE GEORGE — B.C.
QE 26 15256-2