

PLAN No 31750

Deposited in the Land Title Office at Prince George, B.C. this _____ day of _____, 1985.

Registrar

PLAN OF SUBDIVISION OF PART OF LOT 146, DISTRICT LOT 913, CARIBOO DISTRICT, PLAN 16511

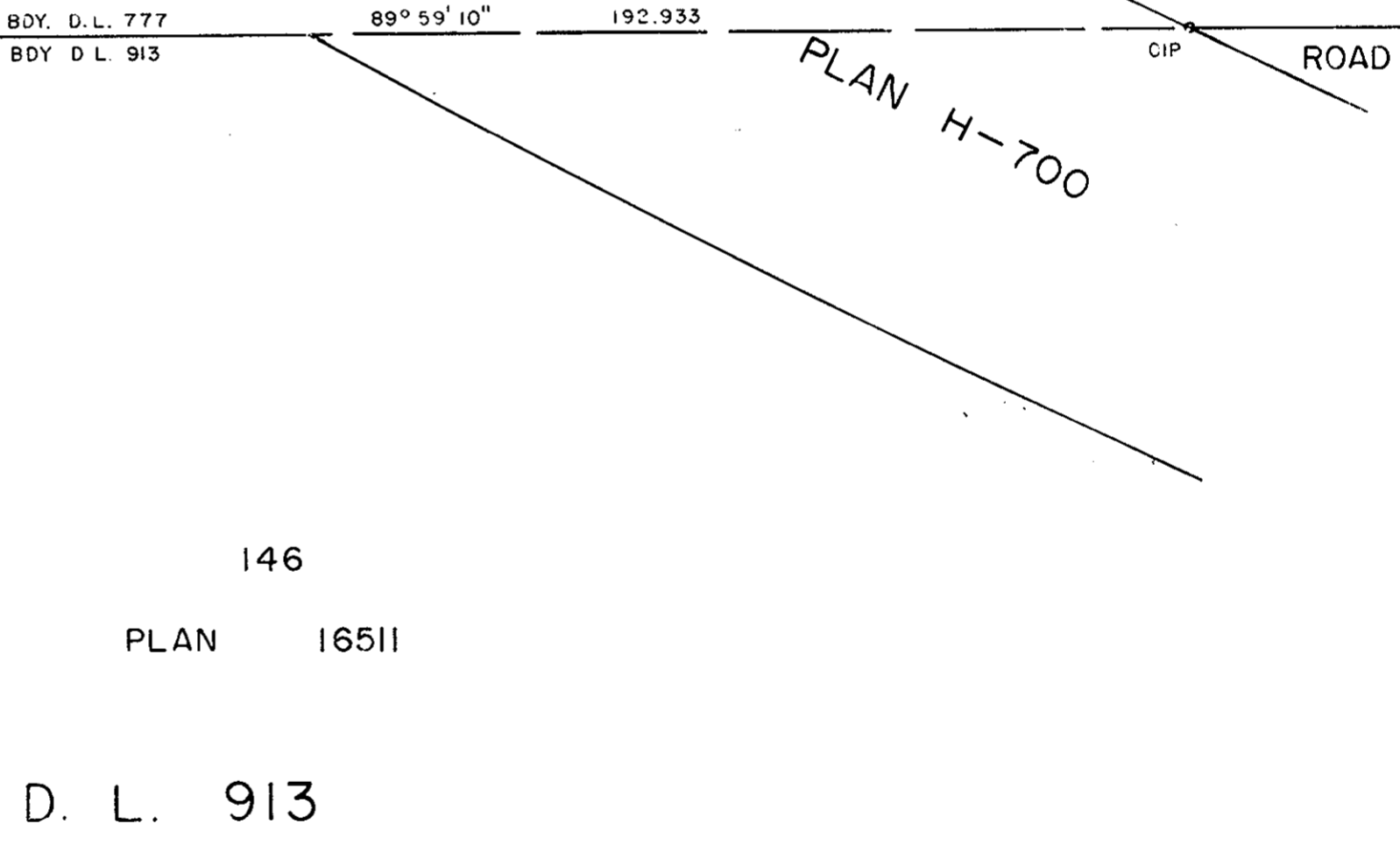
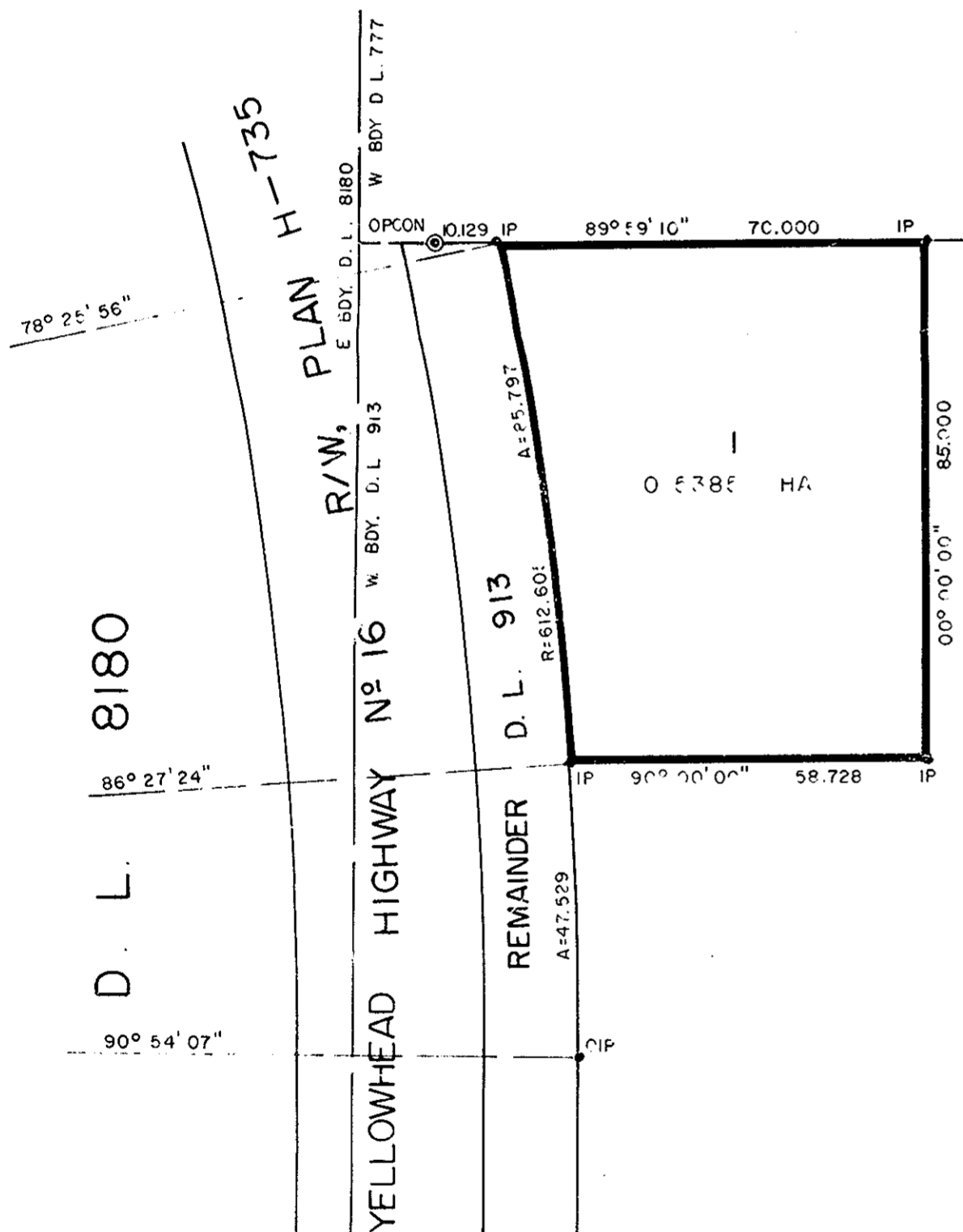
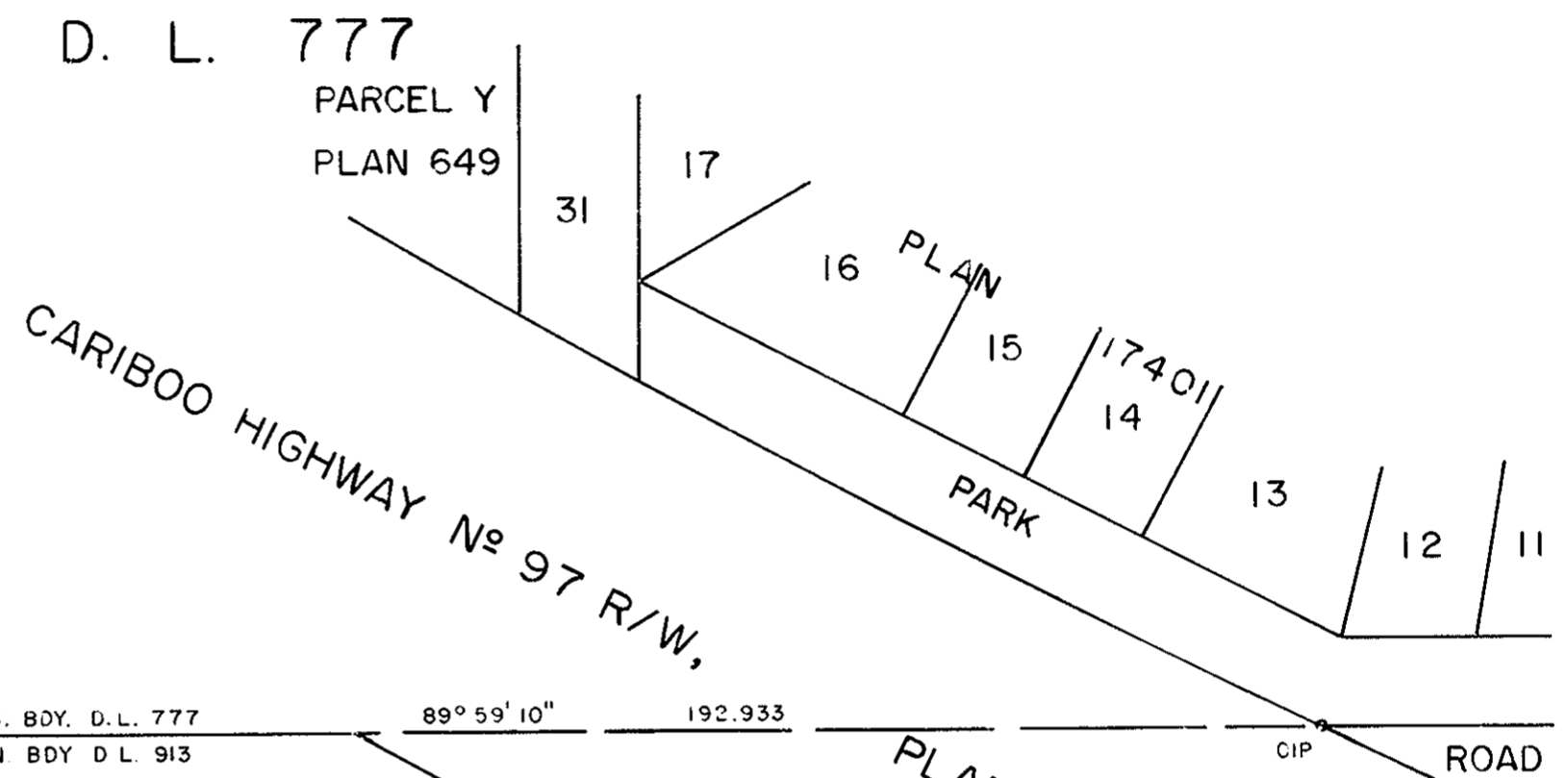
SCALE = 1:1000 B.C.G.S. 93 G.087



NOTE Bearings are astronomic, derived from the north boundary of D.L. 913 as shown on Plan 16511.

Distances are shown in metres

LEGEND
● OP/ON denotes an old concrete monument found.
● OIP denotes an old iron pin found.
● IP denotes an iron pin set.



This plan lies within the Fraser - Fort George Regional District.

Approved under the Land Title Act this _____ day of _____, 1985.

Approving Officer, City of Prince George

Approved under the Land Title Act this _____ day of _____, 1985.

Approving Officer, Ministry of Transportation and Highways

I, GORDON KILBRIDE, a British Columbia Land Surveyor, of Prince George, in British Columbia, certify that I was present at and personally supervised the survey represented by this plan, and that the survey and plan are correct. The survey was completed on the 10th day of December, 1985.

Gordon Kilbride, B.C.L.S.

W.D. USHER & ASSOCIATES
LAND SURVEYORS
PRINCE GEORGE - B.C.
QA 14944