

GU

PLAN No. 31725

Deposited in the Land Title Office at Prince George, B.C.
on this 18 day of Aug 1986

W.G.
REGISTRAR

REFERENCE PLAN OF EASEMENT OF PART OF REM. N.W. 1/4 DISTRICT LOT 4047, CARIBOO DISTRICT.

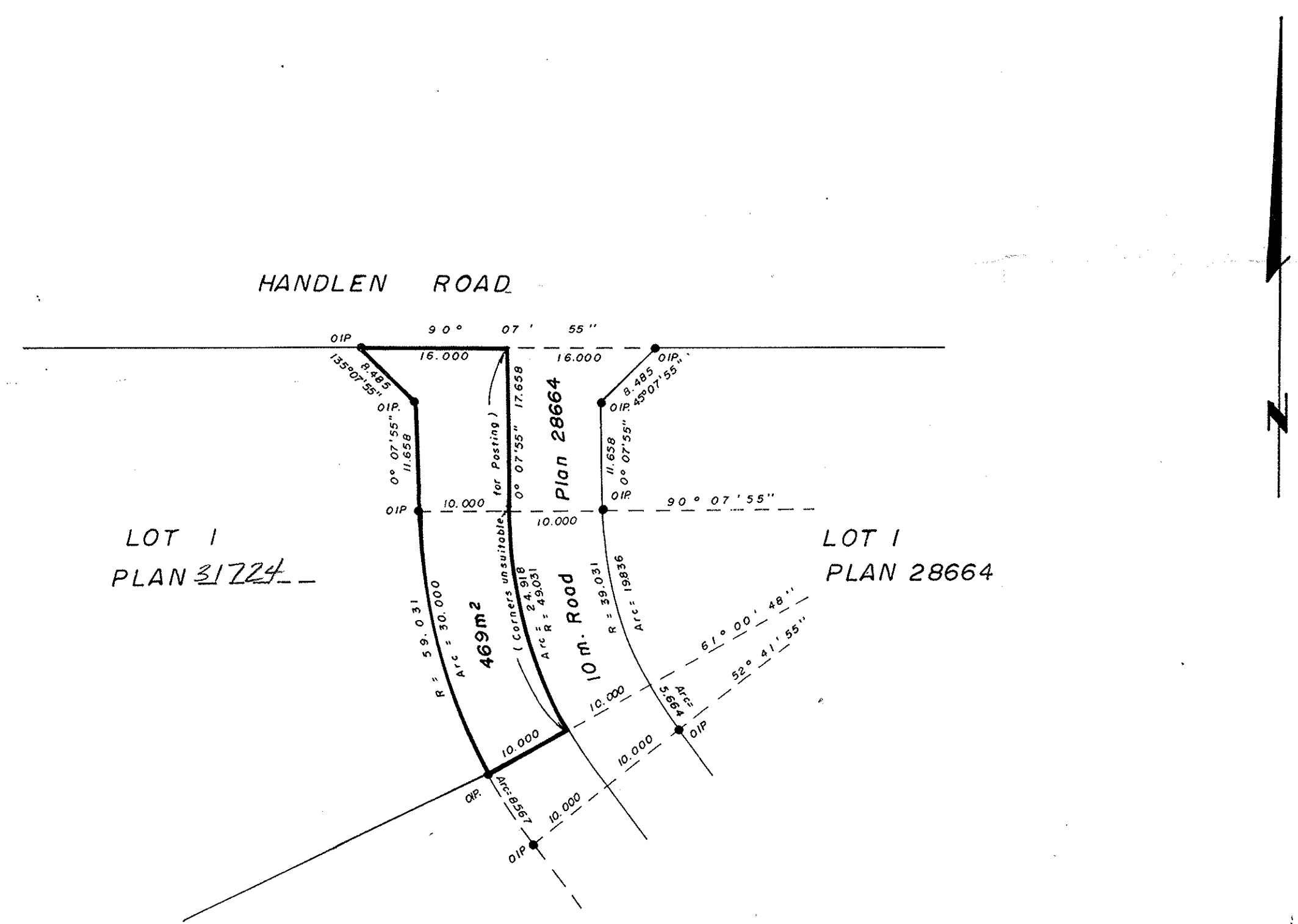
SCALE: 1:500 (Distances are in metres.)



PAPER PRINT ONLY

**RECORDS
SECTION**

DO NOT REMOVE



Bearings are astronomic and are derived
from Plan 28664.

- P Con.....Standard Concrete Post
- PP.....Standard Pipe Post
- CIP.....Capped Iron Post
- IP.....Iron Post
- LP.....Lead Plug
-Denotes Old
- WT.....Denotes Witness

I, D. Keown, a British Columbia Land Surveyor of the City of Prince George, in British Columbia, certify that I was present at and personally superintended the survey represented by this plan, and that the survey and plan are correct.
The survey was completed on the 14th day of July, 1986.

Dale Keown
D. Keown, B.C.L.S.

BOOK OF REFERENCE	
Description	Area
Rem. N.W. 1/4 D.L. 4047	469 m ²

REM. N.W. 1/4
D. L. 4047

This plan lies within the FRASER-FORT
GEORGE REGIONAL DISTRICT.

McWILLIAM--WHYTE--GOBLE and ASSOCIATES
BRITISH COLUMBIA LAND SURVEYORS
Kamloops - Prince George - Smithers - Salmon Arm - Clearwater
FILE 86056 D.L. 4047.