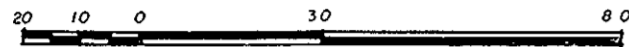


PLAN OF SUBDIVISION OF
PART OF REMAINDER OF N.W. 1/4
D.L. 4047, CARIBOO DISTRICT.

SCALE: 1:1250 (DISTANCES ARE IN METRES)



PLAN 31724

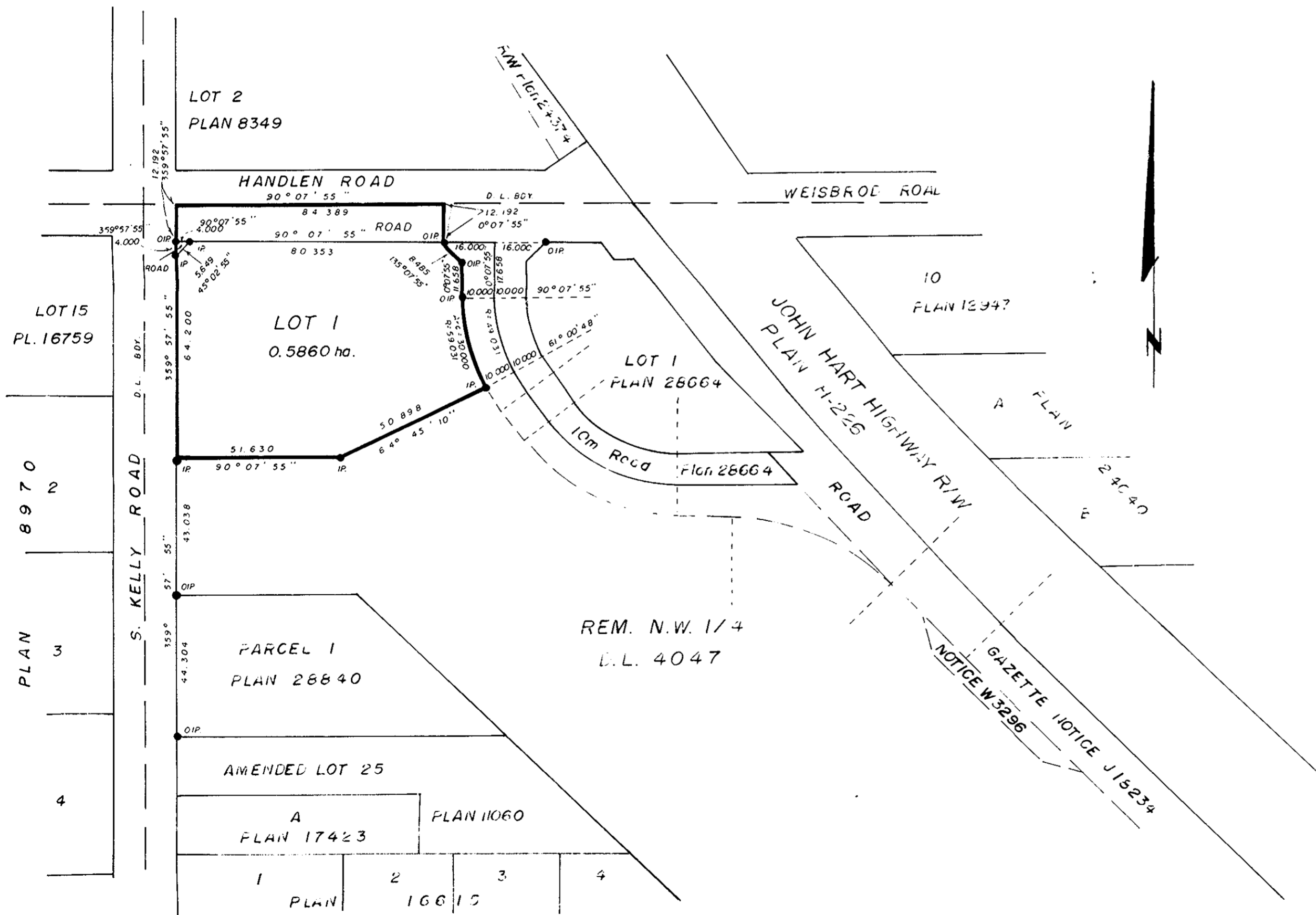
Deposited in the Land Title Office
at Prince George, B.C.
on the 18 day of Aug. 1986.

W. B.
Registrar

PAPER PRINT ONLY

RECORDS
SECTION

DO NOT REMOVE



Bearings are astronomic and are derived from
Plan 28664

- ⊙ R.con. Standard Concrete Post.
- ⊙ R.Rock Standard Rock Post.
- PP Standard Pipe Post.
- I.P. Standard Iron Post.
- P. Wooden Post.
- L.P. Lead Plug.
- Denoting "Old"
- WT. Denoting "Witness"
- CIP. Capped Iron Post.
- TH. Traverse Hub.

Owner: Hartwood Holdings Ltd.
Incorporation No. 61202

[Signature]

Authorized Signatories

Owner: Matte Investments Ltd.
Incorporation No. 60429

[Signature]

Authorized Signatories

I, Victor Bartell, a British Columbia
land surveyor, of Prince George,
in British Columbia, certify that I was present
at and personally superintended the survey
represented by this plan, and that the survey
and plan are correct. The survey was completed
on the 25th day of May 1986.

Victor Bartell, B.C.L.S.

Approved under the Land Title Act on
the ___ day of ___ 19__

Approving Officer
City of Prince George

This Plan lies within the Fraser-Fort George
Regional District

Approved as to dedication
of Road on SRW 02300?

City of Prince George

McWilliam-Whyte-Goble & Associates
B.C. Land Surveyors
Kamloops-Prince George-Salmon Arm-Smithers
FB/P 4047 File No. 86012