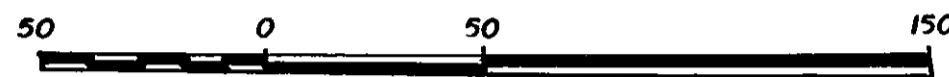


26-FF-226

EXPLANATORY PLAN
 TO ACCOMPANY RESTRICTIVE COVENANT AREA
 WITHIN THE NORTH WEST 1/4 OF DISTRICT LOT 1598,
 EXCEPT PLANS 14770, 16488, 16620, 29304 AND 31091,
 CARIBOO DISTRICT.

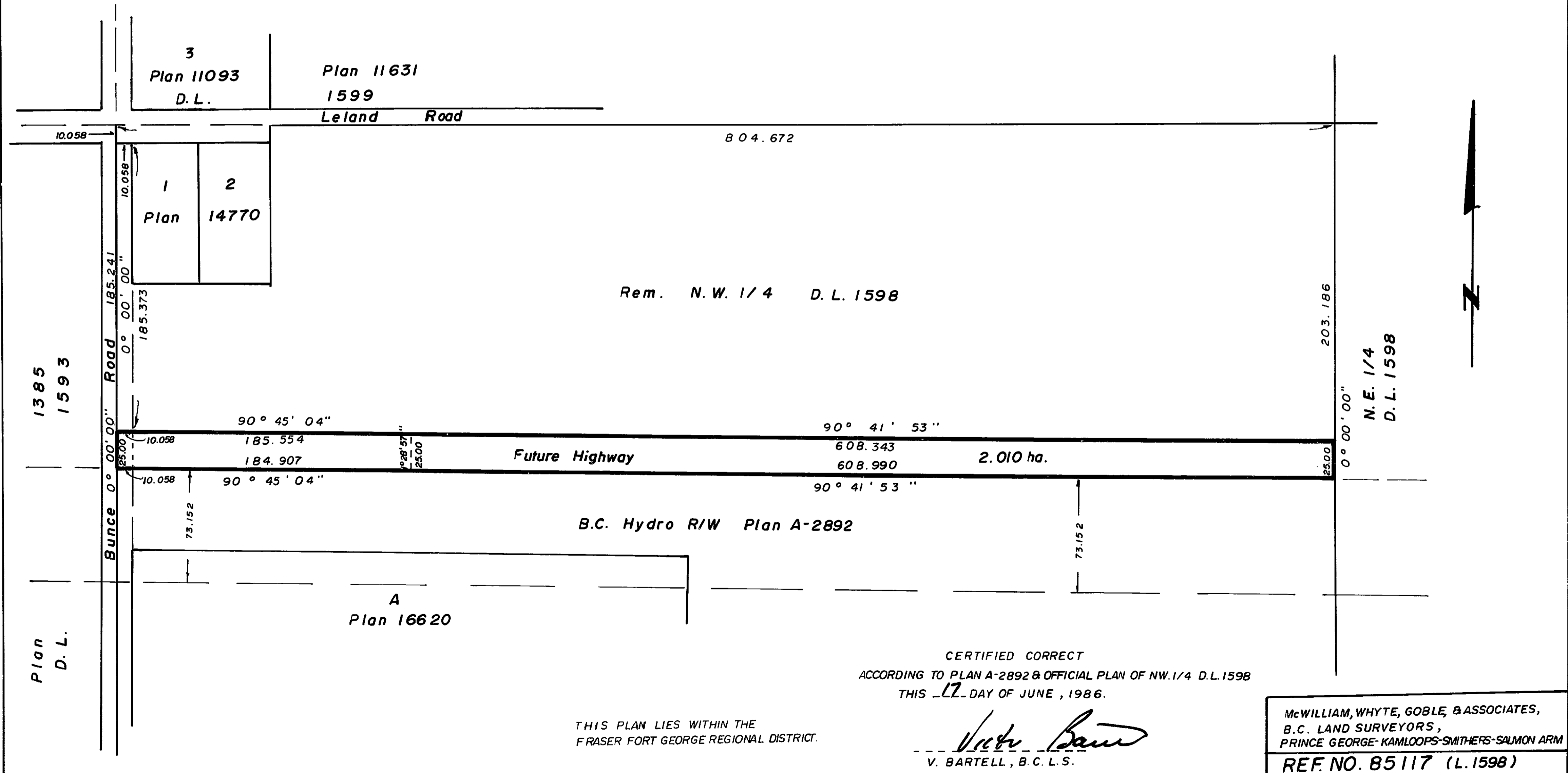
SCALE: 1:2500 (DISTANCES ARE IN METRES)



PLAN NO. 31655

DEPOSITED IN THE LAND TITLE OFFICE AT
PRINCE GEORGE THIS 17 DAY OF JULY, 1986.

W. D. Lundy
 REGISTRAR



CERTIFIED CORRECT
 ACCORDING TO PLAN A-2892 & OFFICIAL PLAN OF NW.1/4 D.L.1598
 THIS 17 DAY OF JUNE, 1986.

THIS PLAN LIES WITHIN THE
 FRASER FORT GEORGE REGIONAL DISTRICT.

V. Bartell
 V. BARTELL, B.C. L.S.

McWILLIAM, WHYTE, GOBLE, & ASSOCIATES,
 B.C. LAND SURVEYORS,
 PRINCE GEORGE-KAMLOOPS-SMITHERS-SALMON ARM
 REF. NO. 85117 (L.1598)