

PLAN OF SUBDIVISION OF
REMAINDER OF LOT 1 PLAN 21465 and
LOT A, PLAN 25487,

DISTRICT LOT 1599, CARIBOO DISTRICT.

SCALE: 1:1000 (Distances are in metres).



Bearings are astronomic derived from the east boundary
of Lot 1, Plan 21465 (0° 15' 30")

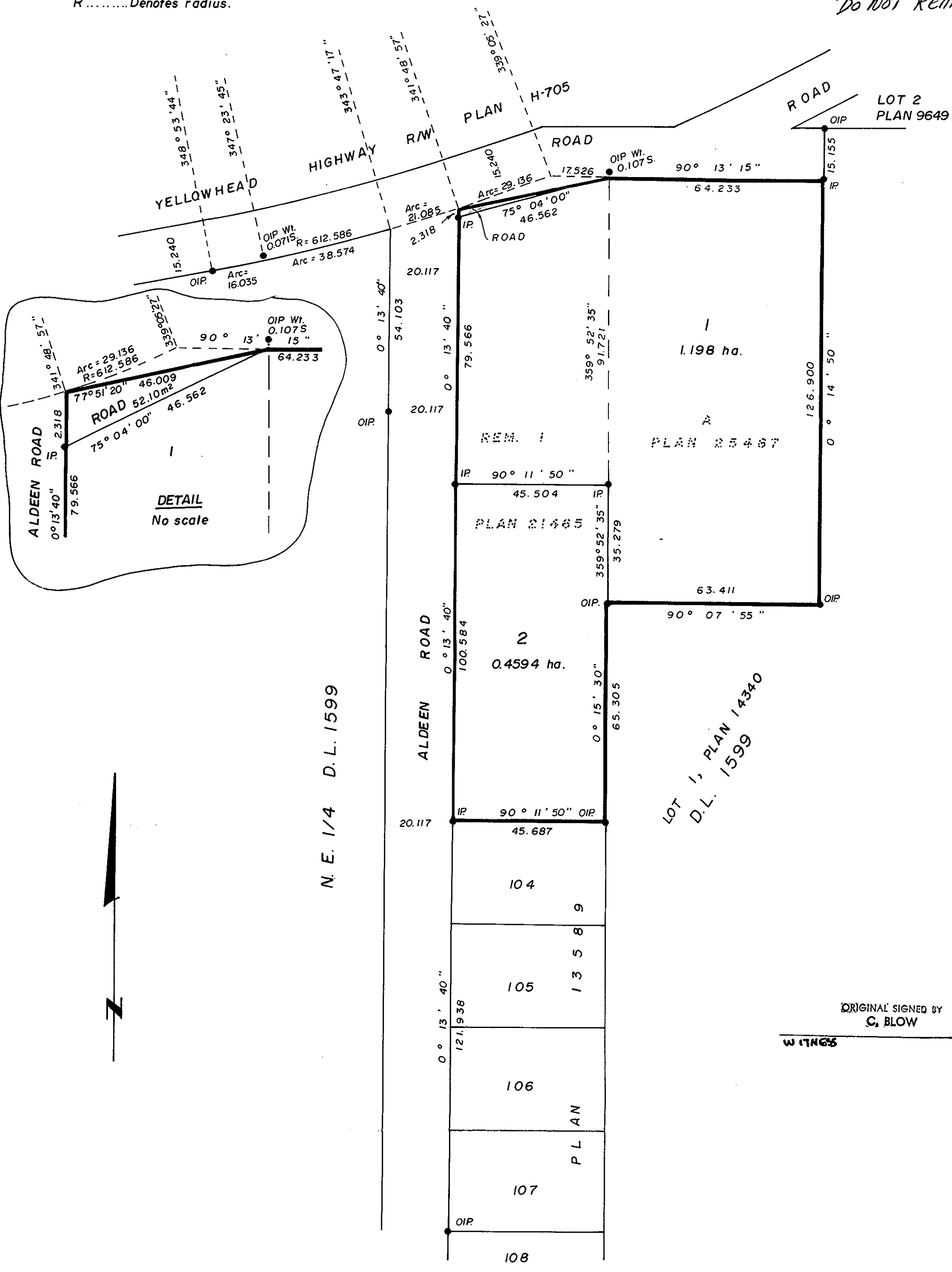
- OIP..... Iron Post found
- IP..... Standard Iron Post.
- Wt..... Denotes witness
- R..... Denotes radius.

PAPER PRINT ONLY

**RECORDS
SECTION**

DO NOT REMOVE

PLAN No 31597
 Deposited in the Land Title
 Office at Prince George, B.C. this
 26 day of June, 1986.
 W.Y.Y.
 Registrar



The Pentecostal Assemblies of Canada

[Signature]
 Authorized Signatory

[Signature]
 Authorized Signatory

The Royal Bank of Canada
by its Lawful Attorneys.

ORIGINAL SIGNED BY

 D. G. PETERSON
 Authorized Signatory
 ORIGINAL SIGNED BY

 A. WASYLENKO
 Authorized Signatory

Prince George and District Credit Union

[Signature]
 Authorized Signatories

[Signature]
 Authorized Signatories.

Approved under the Land Title Act
this 27 day of May 1986.

[Signature]
 Approving Officer
 City of Prince George

Approved under the Land Title Act
this ___ day of ___, 19__.

 Approving Officer,
 Ministry of Transportation and Highways

This plan lies within the Fraser-Fort George
Regional District.

I, Gordon Kilbride, a British Columbia Land
 Surveyor, of Prince George, in British Columbia,
 certify that I was present at and did personally
 superintend the survey represented by this plan,
 and that the survey and plan are correct. The
 survey was completed on the 11th day of February,
 1986.

[Signature]
 Gordon Kilbride, B.C.L.S.