

26-FF-226

REM. LOT 13, BLOCK 38, PLAN 752

90° 17' 05"
36.557

PLAN NO. 31346

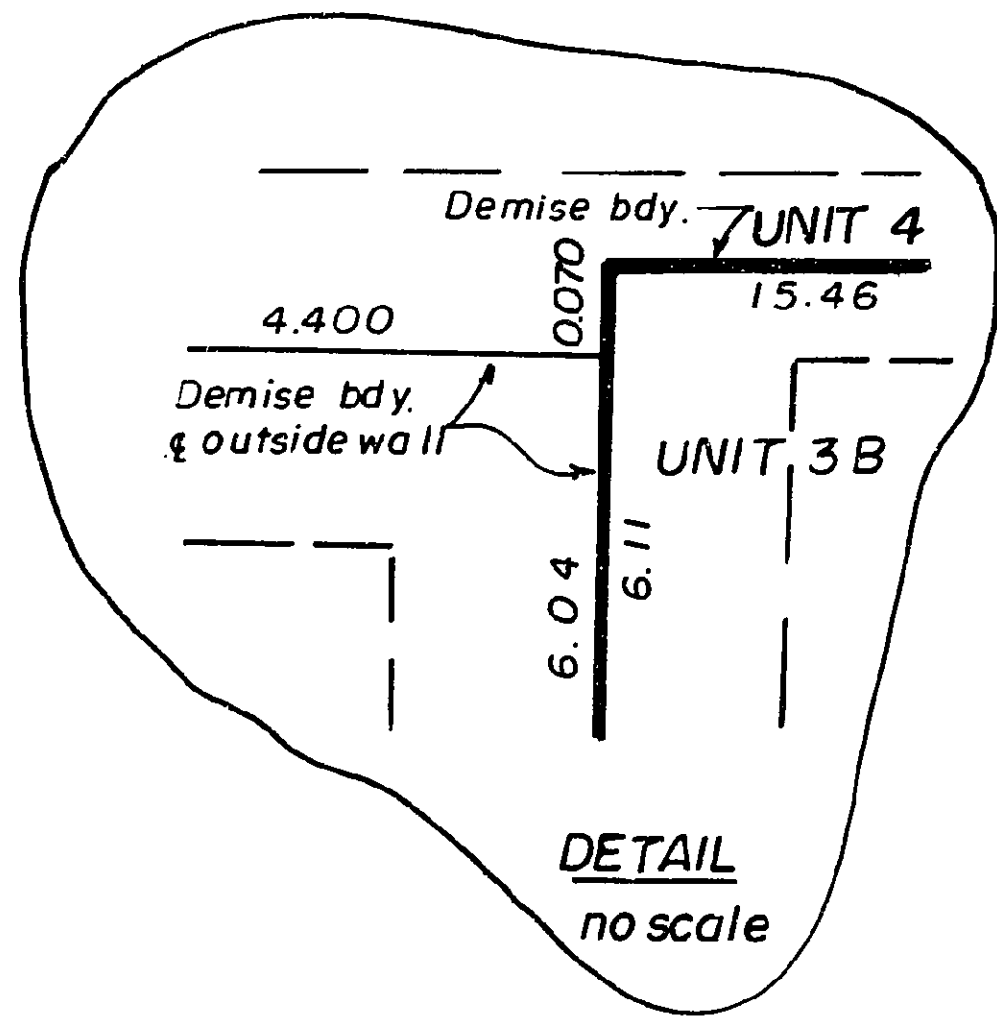
Deposited in the Land Title Office at Prince George
this 21 day of Feb. 1986.

"W. G. Gandy" prof.
Registrar



CENTRAL STREET

0° 17' 00"
71.946

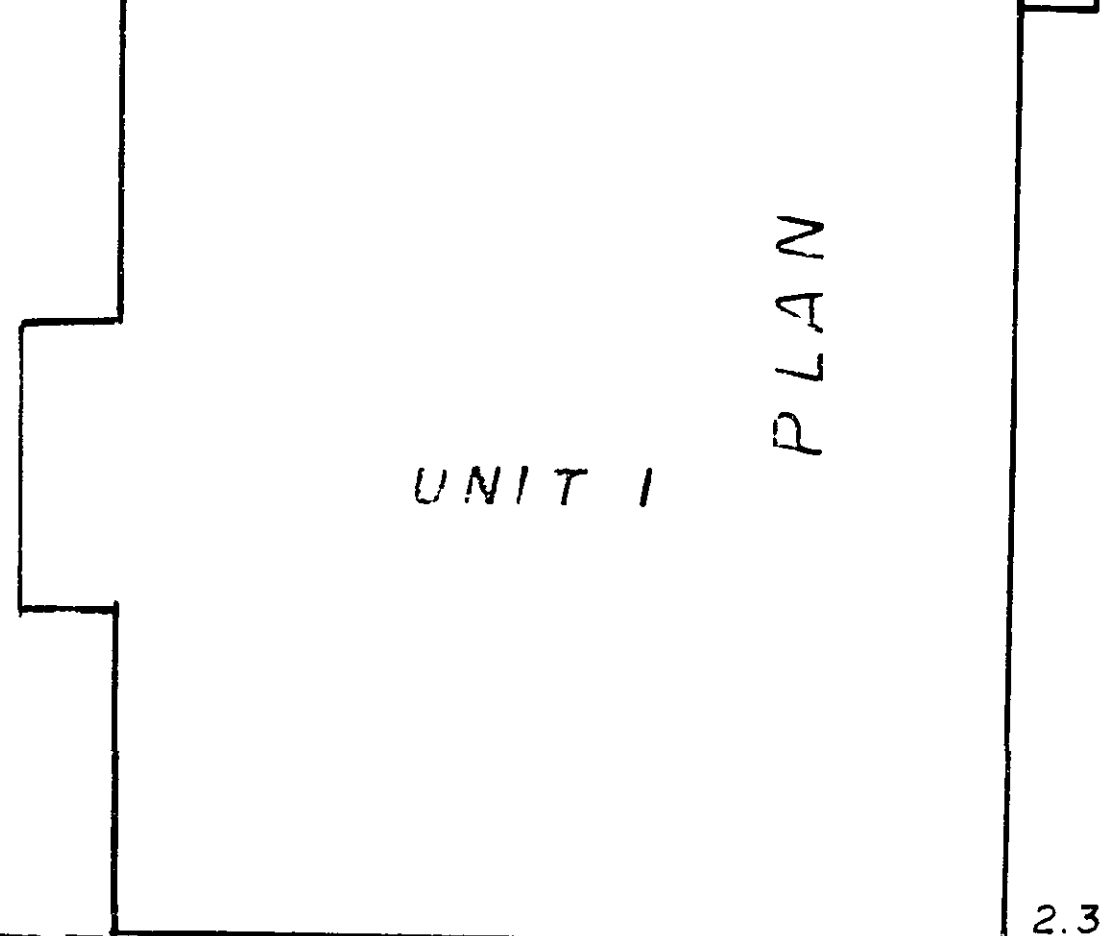
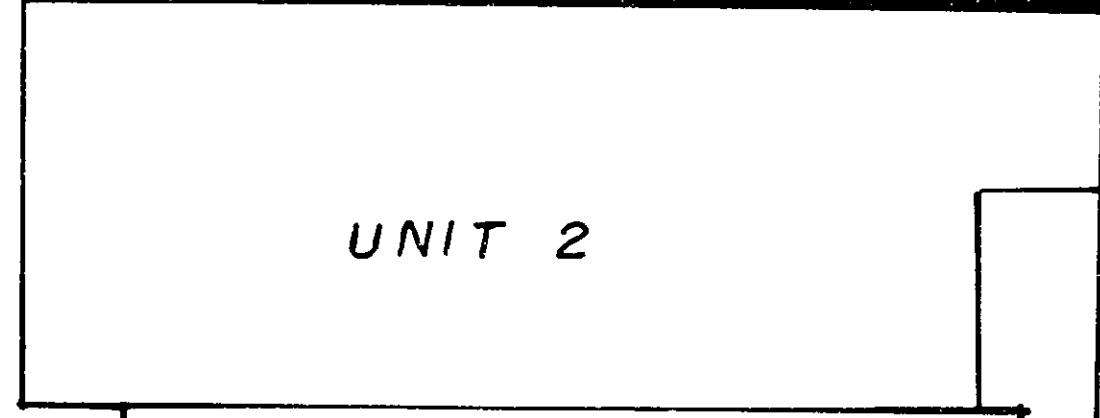
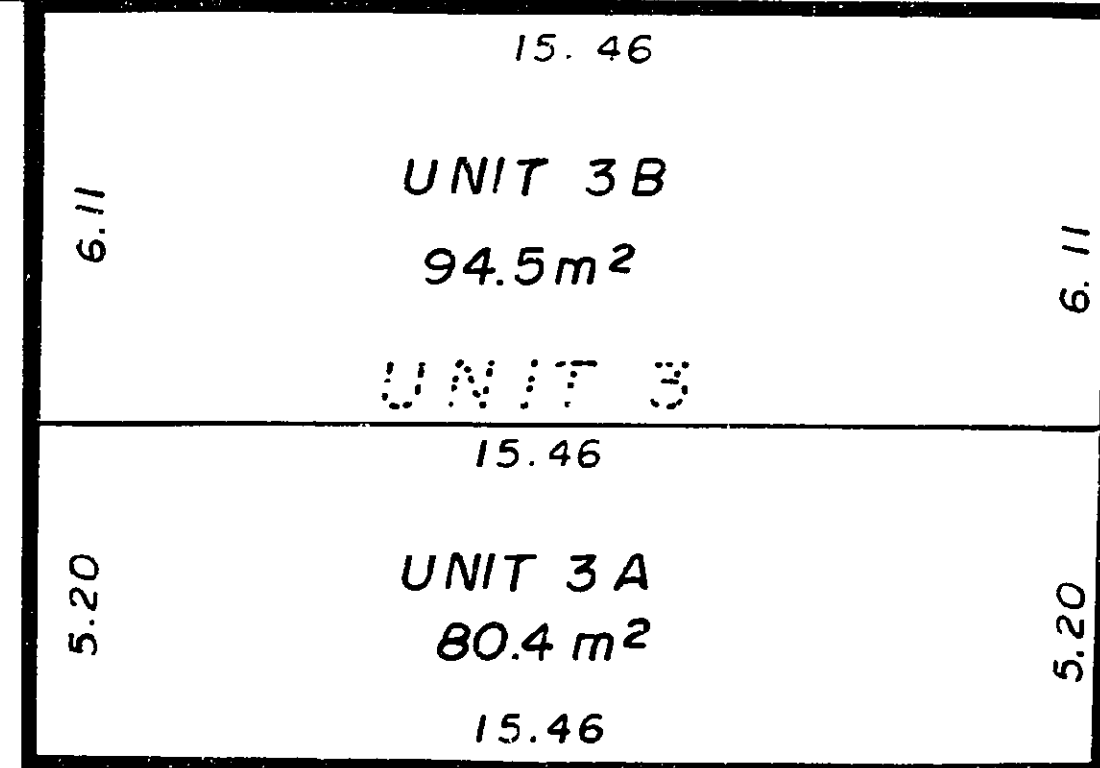
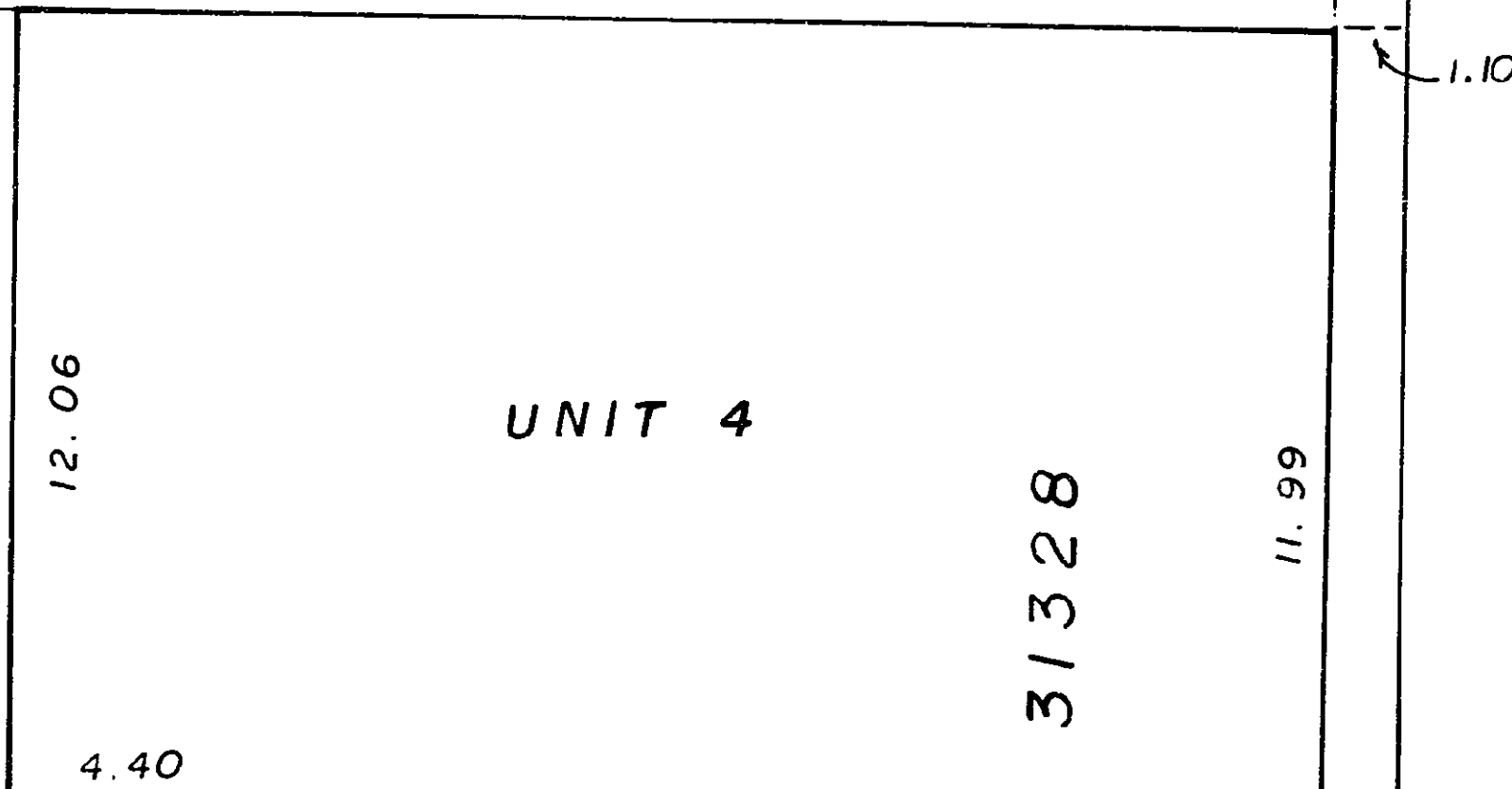


PARCEL 1
PLAN 30928

21.60

36.605
90° 14' 50"

PARCEL 1, PLAN 29143



0° 14' 40"
71.921

LANE

EXPLANATORY PLAN OF
LEASEHOLDS ON PART OF BUILDING
SHOWN AS UNIT 3 ON PLAN 31328,
SITUATE ON PARCEL 1, PLAN 30928,
DISTRICT LOT 937, CARIBOO DISTRICT.

SCALE: 1: 200 (DISTANCES ARE IN METRES)



CERTIFIED CORRECT
according to Land Title Office Records
and field measurements
this 13th day of February, 1986.

D. Keown
D. Keown, B.C.L.S.

This plan lies within the Fraser Fort
George Regional District.

McWilliam, Whyte, Goble & Associates,
B.C. Land Surveyors,
Prince George-Kamloops-Smithers-Salmon Arm.

REF. NO. 85098 - 1 DL 937