

PLAN OF SUBDIVISION OF PARTS OF  
 LOT 39 PLAN 22538 AND LOT 63, PLAN 24318,  
 DISTRICT LOT 482, CARIBOO DISTRICT.

SCALE: 1:1000 (Distances are in metres.)



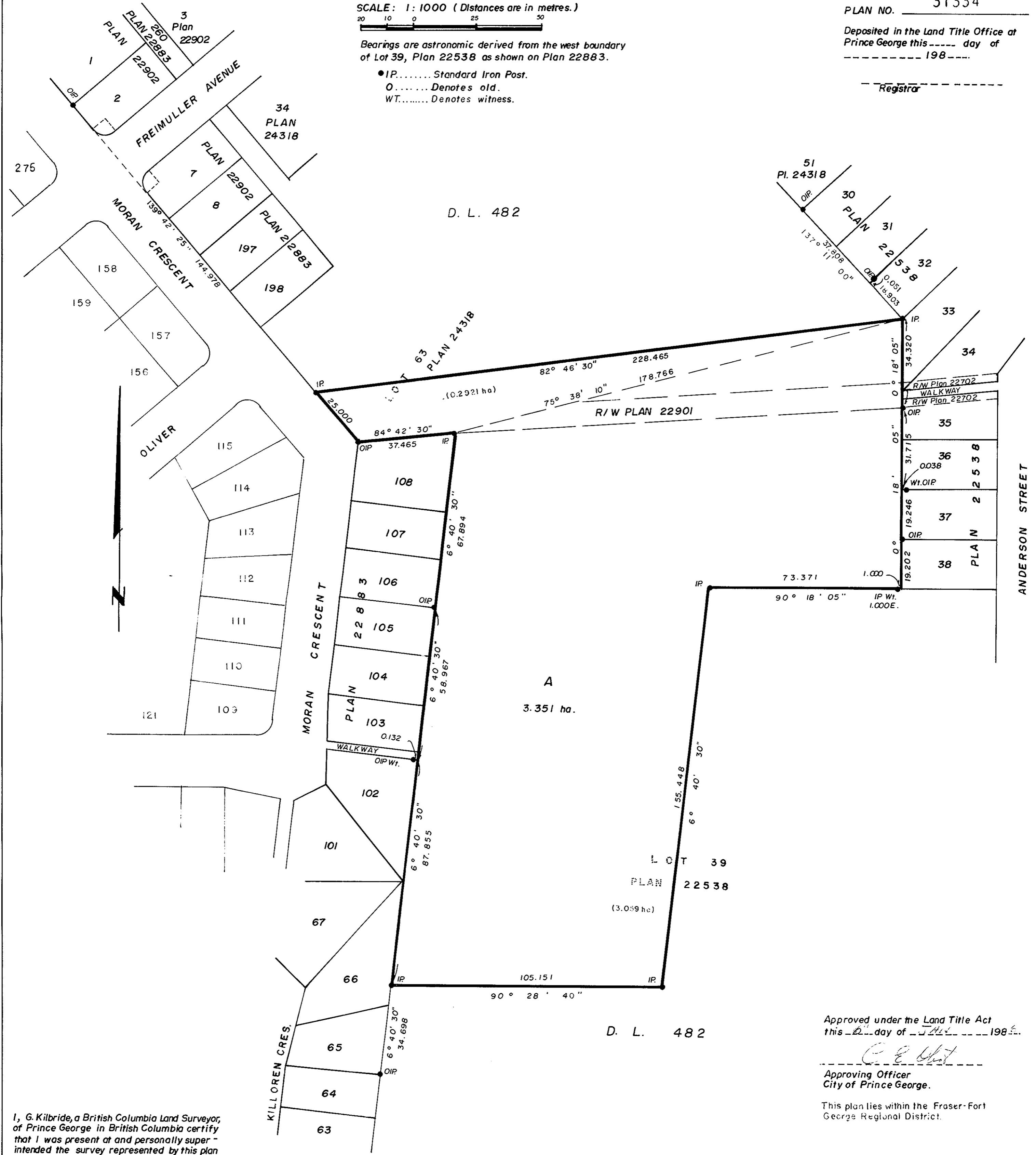
Bearings are astronomic derived from the west boundary of Lot 39, Plan 22538 as shown on Plan 22883.

- IP..... Standard Iron Post.
- O..... Denotes old.
- WT..... Denotes witness.

PLAN NO. 31334

Deposited in the Land Title Office at  
 Prince George this \_\_\_\_\_ day of  
 \_\_\_\_\_ 198\_\_\_\_.

Registrar



I, G. Kilbride, a British Columbia Land Surveyor, of Prince George in British Columbia certify that I was present at and personally supervised the survey represented by this plan and that the survey and plan are correct. The survey was completed on the 20 day of December, 1985.

*Gordon Kilbride*  
 G. Kilbride, B.C.L.S.

Owner: City of Prince George

Mayor *[Signature]*

Clerk *[Signature]*

Approved under the Land Title Act  
 this 21 day of Dec 1985.

*[Signature]*  
 Approving Officer  
 City of Prince George.

This plan lies within the Fraser-Fort  
 George Regional District.

W.D. Usher & Associates,  
 B.C. Land Surveyors,  
 Prince George - B.C.