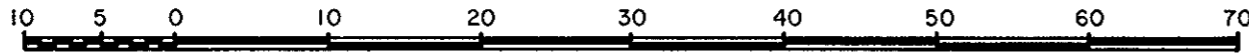


31329

PLAN OF SUBDIVISION OF PART OF
LOT A, DISTRICT LOTS 936 AND 8169
CARIBOO DISTRICT, PLAN 16996
SCALE = 1 : 500

PLAN No _____
Deposited in the Land Title
Office at Prince George, B.C. this
14 day of Feb., 1986.

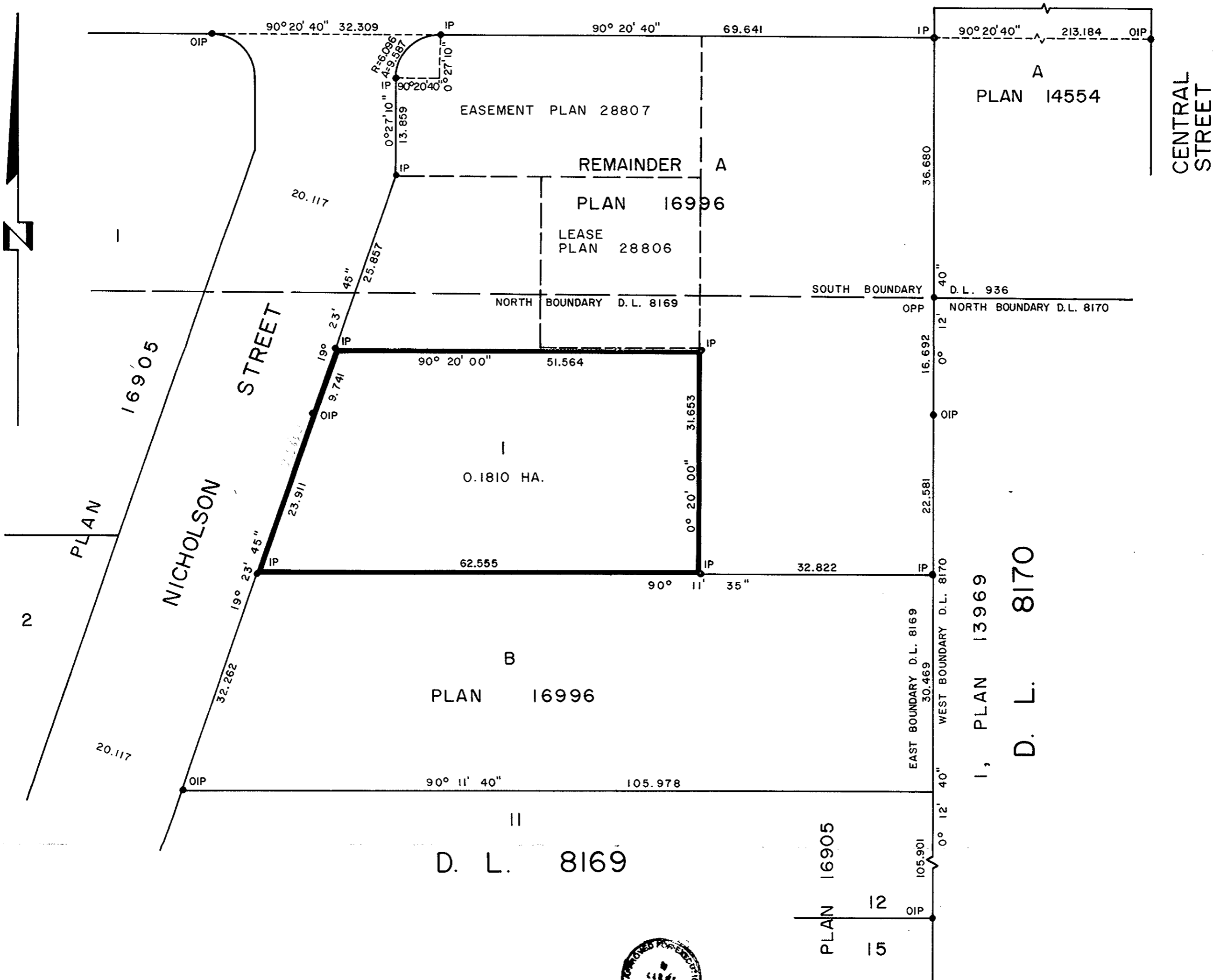


Registrar *W.G.*

NOTE: Bearings are astronomic, derived from the east
boundary of D.L. 8169 as shown on Plan 16905.
Distances are shown in metres.

LEGEND: ● OPP denotes an old pipe post found.
● OIP denotes an old iron pin found.
● IP denotes an iron pin set.

D. L. 936
22 ND AVENUE



I, GORDON KILBRIDE, a British Columbia Land
Surveyor, of Prince George, in British Columbia,
certify that I was present at and did personally
superintend the survey represented by this plan,
and that the survey and plan are correct. The
survey was completed on the 24th day of January,
1986.

Gordon Kilbride

S & S ENTERPRISES LTD.

[Signature]
Authorized signatory

[Signature]
Authorized signatory

CANADIAN IMPERIAL BANK OF
COMMERCE

By its Attorneys
[Signature]
Authorized signatory
ASSISTANT GENERAL MANAGER

[Signature]
Authorized signatory INSPECTOR

Approved under the Land Title Act
this 31st day of JANUARY, 1986.

[Signature]
Approving Officer, City of Prince George.

This plan lies within the Fraser-Fort George
Regional District.

Checked, Scaled and Drawn
in the presence of:
[Signature]
3607 Hastings St
Pr. Ge. B.C.
BANKER
AS TO BOTH SIGNATURES

W.D. USHER & ASSOCIATES
LAND SURVEYORS
PRINCE GEORGE - B.C.
QB 15024