

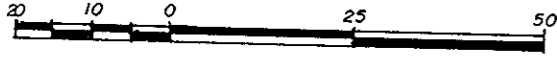
PLAN OF SUBDIVISION OF  
 LOTS 9 TO 14 INCLUSIVE, BLOCK 12, AND  
 LOTS 1 TO 6, INCLUSIVE, BLOCK 13, PLAN 701,  
 DISTRICT LOT 934, CARIBOO DISTRICT.

JK

31311

PLAN NO. \_\_\_\_\_  
 Deposited in the Land Title Office at  
 Prince George this 4 day of Feb 1986.

SCALE: 1: 1000

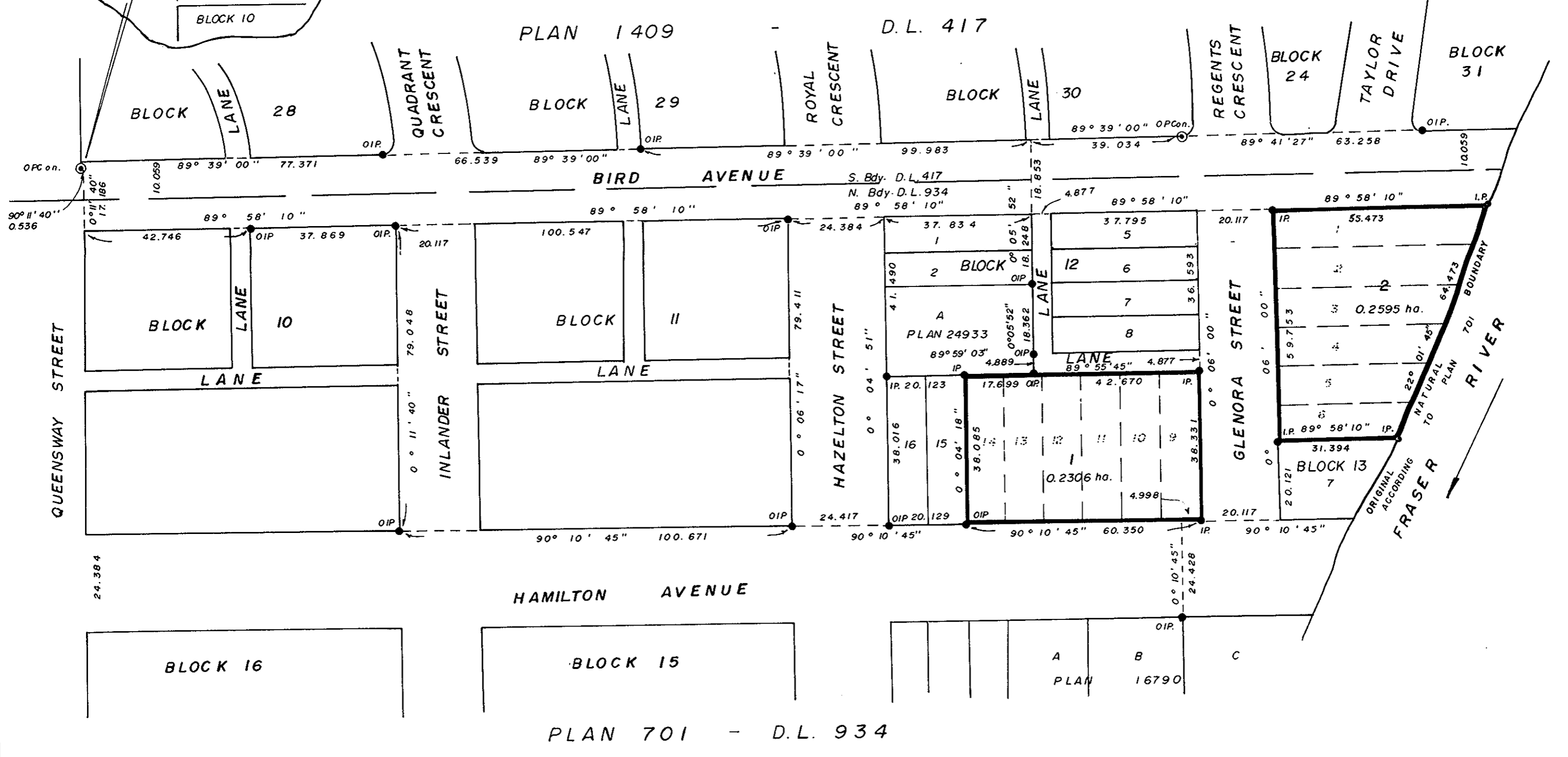
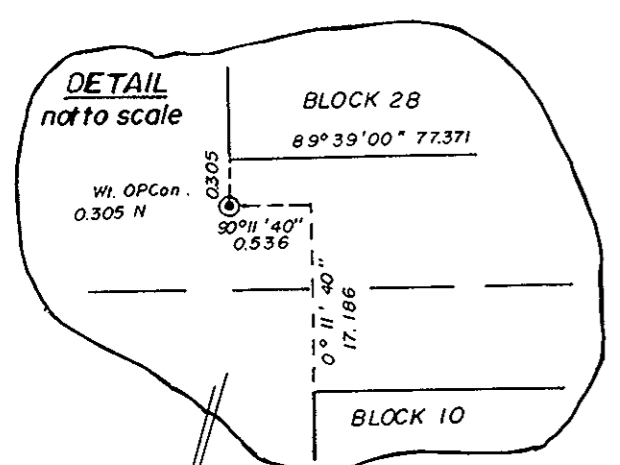


Bearings are astronomic derived from  
 the South bdy. of Blk. 28, Plan 1409,  
 D.L. 417.

- IP..... Standard Iron Post
- ⊙ PCon..... Standard Post in Concrete
- O..... Denotes "old"
- Wt..... Denotes "witness"

Distances are in metres.  
 This plan lies within the Fraser Fort George  
 Regional District.

Registrar <sup>W6</sup> \_\_\_\_\_



I, Gordon Kilbride, a British Columbia Land Surveyor,  
 of Prince George in British Columbia certify that  
 I was present at and personally superintended the  
 survey represented by this plan, and that the survey  
 and plan are correct. The survey was completed on  
 the 21st day of October, 1985.

*Gordon Kilbride*  
 Gordon Kilbride, B.C.L.S.

Owner:  
CITY OF PRINCE GEORGE  
*E.W. Murray*  
 Mayor  
*A.W. Buchanan*  
 City Clerk

Approved under the Land Title Act  
 this 27th day of JANUARY, 1986.  
*C.E. O'Neil*  
 Approving Officer, City of Prince George.

W. D. Usher & Associates,  
 B.C. Land Surveyors,  
 Prince George - B.C.

File No. 14627.  
 PI 61