

W-N-DN

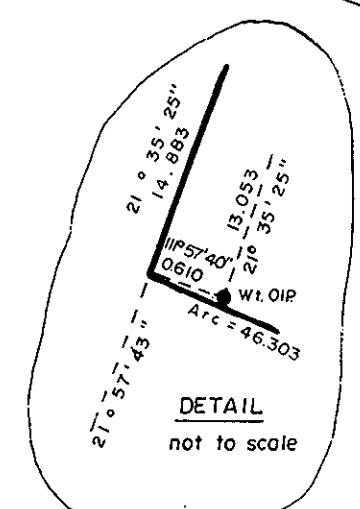
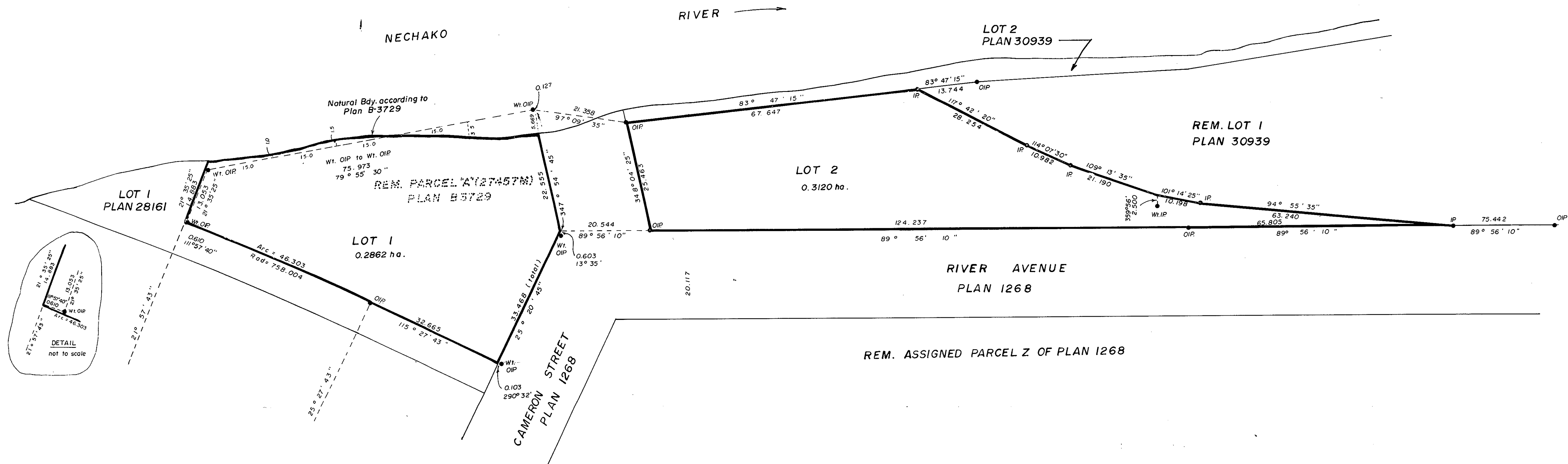
PLAN OF SUBDIVISION OF  
REM. PARCEL A ( 27457M ) SHOWN ON PLAN B3729, PLAN 1268,  
AND PART OF LOT 1 OF PLAN 30939,  
DISTRICT LOT 343, CARIBOO DISTRICT.

PLAN NO. 31286

DEPOSITED IN THE LAND TITLE OFFICE AT PRINCE GEORGE  
THIS 24th DAY OF JAN 1986

W.B.S.  
REGISTRAR

SCALE: 1: 500 ( Distances are in metres )



BEARINGS ARE ASTRONOMIC DERIVED FROM  
PLAN 30939.

- I.P. .... STANDARD IRON POST.
- ..... DENOTES OLD
- W.I. .... DENOTES WITNESS.

Reapproved December 24th 1985

APPROVED UNDER THE LAND TITLE ACT  
THIS 27th DAY OF JAN 1986

APPROVING OFFICER  
CITY OF PRINCE GEORGE

OWNER: N.R.T. RENTAL CORP  
Incorporation # 197311

*[Signature]*  
*[Signature]*  
Authorized Signatories

I V. BARTELL, A BRITISH COLUMBIA LAND SURVEYOR  
OF PRINCE GEORGE IN BRITISH COLUMBIA CERTIFY THAT  
I WAS PRESENT AT AND PERSONALLY SUPERINTENDED THE  
SURVEY REPRESENTED BY THIS PLAN AND THAT THE SURVEY  
AND PLAN ARE CORRECT. THE SURVEY WAS COMPLETED ON  
THE 17 DAY OF AUGUST, 1985.

*[Signature]*  
V. BARTELL, B.C.L.S.

THIS PLAN LIES WITHIN THE FRASER FORT GEORGE  
REGIONAL DISTRICT.

GUARDIAN TRUST COMPANY  
*[Signature]*  
Authorized Signatories

( M.W. 6890 )  
GUARDIAN TRUST COMPANY  
*[Signature]*  
Authorized Signatories

McWILLIAM, WHYTE, GOBLE, & ASSOCIATES,  
B.C. LAND SURVEYORS,  
PRINCE GEORGE - KAMLOOPS - SMITHERS - SALMON ARM.  
REF. NO. 85085