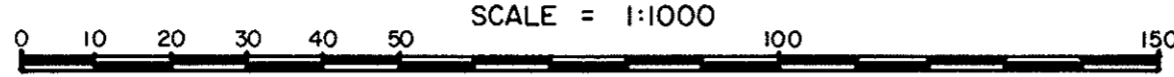


REFERENCE PLAN TO ACCOMPANY BYLAW NO. 4410
OF THE CITY OF PRINCE GEORGE CLOSING PART OF
THE ROAD ADJACENT TO
LOT B, PLAN 17284, DISTRICT LOT 2607
AND DEDICATING AS ROAD PART OF
LOT B, PLAN 17284, DISTRICT LOT 2607
CARIBOO DISTRICT - BRITISH COLUMBIA

PLAN No 3/1196
Deposited in the Land Title
Office at Prince George, B.C. this
____ day of _____, 19____

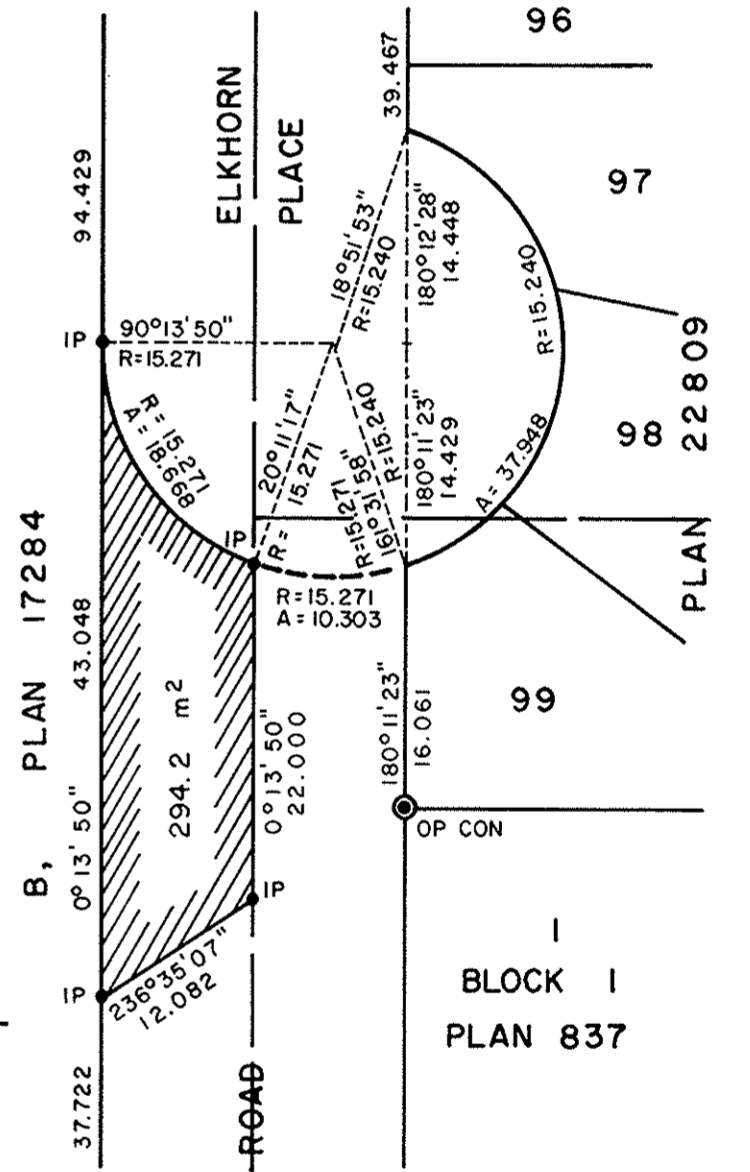
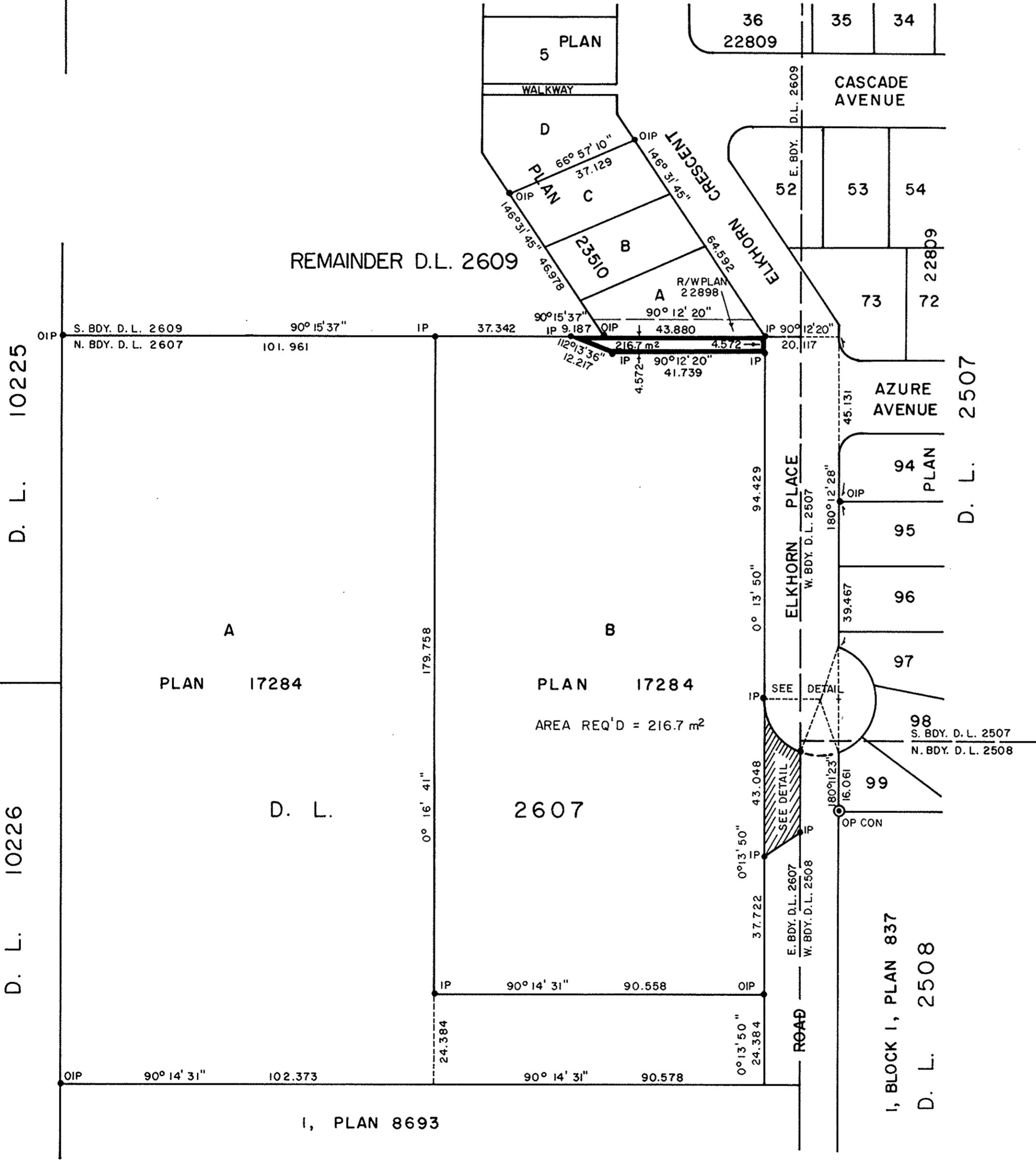
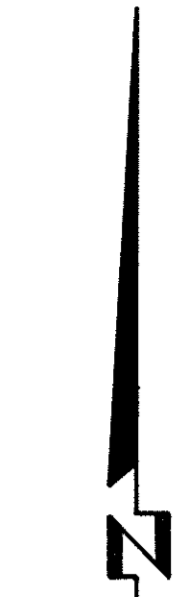


NOTE: Bearings are astronomic, derived from the southwesterly
boundaries of Lots A, B, & C, Plan 23510.

LEGEND:
● OP CON denotes an old concrete monument found.
● OIP denotes an old iron pin found.
● IP denote an iron pin found.

ROAD BEING CLOSED IS SHOWN HATCHED.
ROAD BEING DEDICATED IS SHOWN OUTLINED WITH A BOLD LINE.

Registrar _____



DETAIL
SCALE = 1:500

I, DONALD A. DUFFY, a British Columbia Land
Surveyor, of Prince George, in British Columbia,
certify that I was present at and did personally
superintend the survey represented by this plan,
and that the survey and plan are correct. The
survey was completed on the 31 day of October,
1984.

D.A. Duffy

Approved under the Land Title Act
this 15 day of JAN, 1985

C. E. Obit
Approving Officer, City of Prince George.
Reapproved 25th of April, 1985

C. E. Obit
This plan lies within the Fraser-Fort George
Regional District.
Reapproved 21st of Oct., 1985

C. E. Obit
W.D. USHER & ASSOCIATES
LAND SURVEYORS
PRINCE GEORGE - B.C.
PW 8 14481