

PLAN OF SUBDIVISION OF
PART OF PARCEL A (U 24043)
DISTRICT LOT 4047, CARIBOO DISTRICT, PLAN 27039

SCALE: 1:1000 (Distances are in metres)



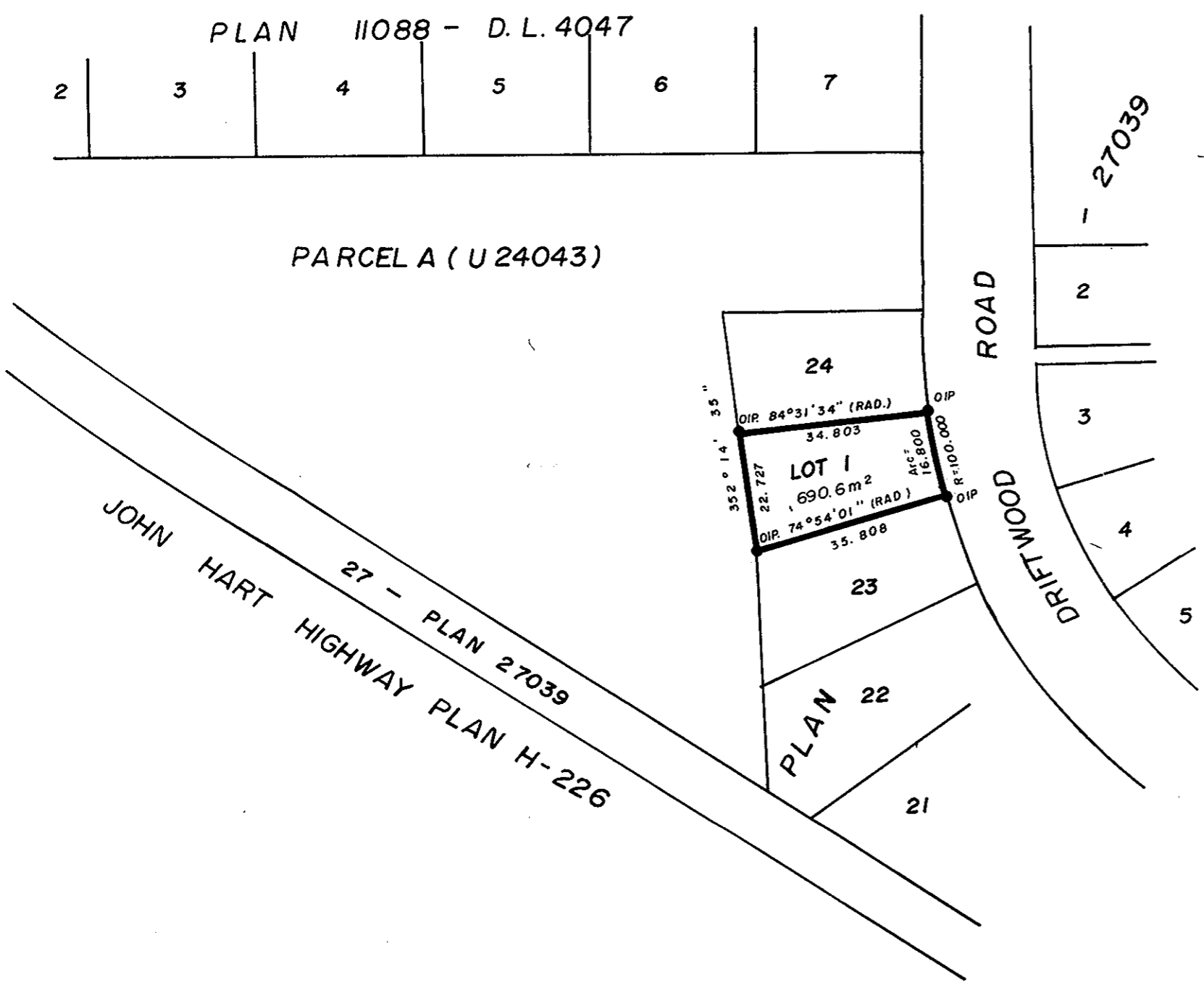
Bearings are astronomic derived from Plan 27039.

- IP..... Standard Iron Post.
- denotes "old"

31141

PLAN NO. _____
Deposited in the Land Title Office at
Prince George this 22nd day of
Nov. 1985.

---wb.---
Registrar



Approved under the Land Title Act
this 22nd day of October 1985.

C. E. Ait

Approving Officer
City of Prince George

Owner: Hartland Baptist Church

Myma Krevosti

Authorized Signatory
Blaine

Authorized Signatory

Mortgage:

Authorized Signatory

Authorized Signatory

I, G. Kilbride, a British Columbia Land Surveyor
of Prince George in British Columbia certify that
I was present at and personally superintended
the survey represented by this plan and that
the survey and plan are correct. The survey
was completed on the 29th day of July, 1985.

Gordon Kilbride

G. Kilbride B.C.L.S.

This plan lies within the Fraser Fort George
Regional District.

W.D. Usher & Associates,
B.C. Land Surveyors,
Prince George - BC.
File: 14157 PO 26