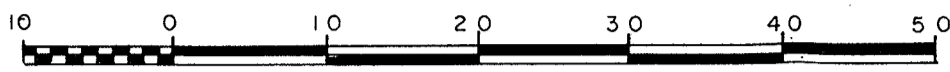


EXPLANATORY PLAN OF LEASE OF
PART OF THE GROUND FLOOR OF
THE BUILDING ON PART OF
LOT 1, PLAN 23328
DISTRICT LOT 8171
CARIBOO DISTRICT
SCALE = 1 : 500



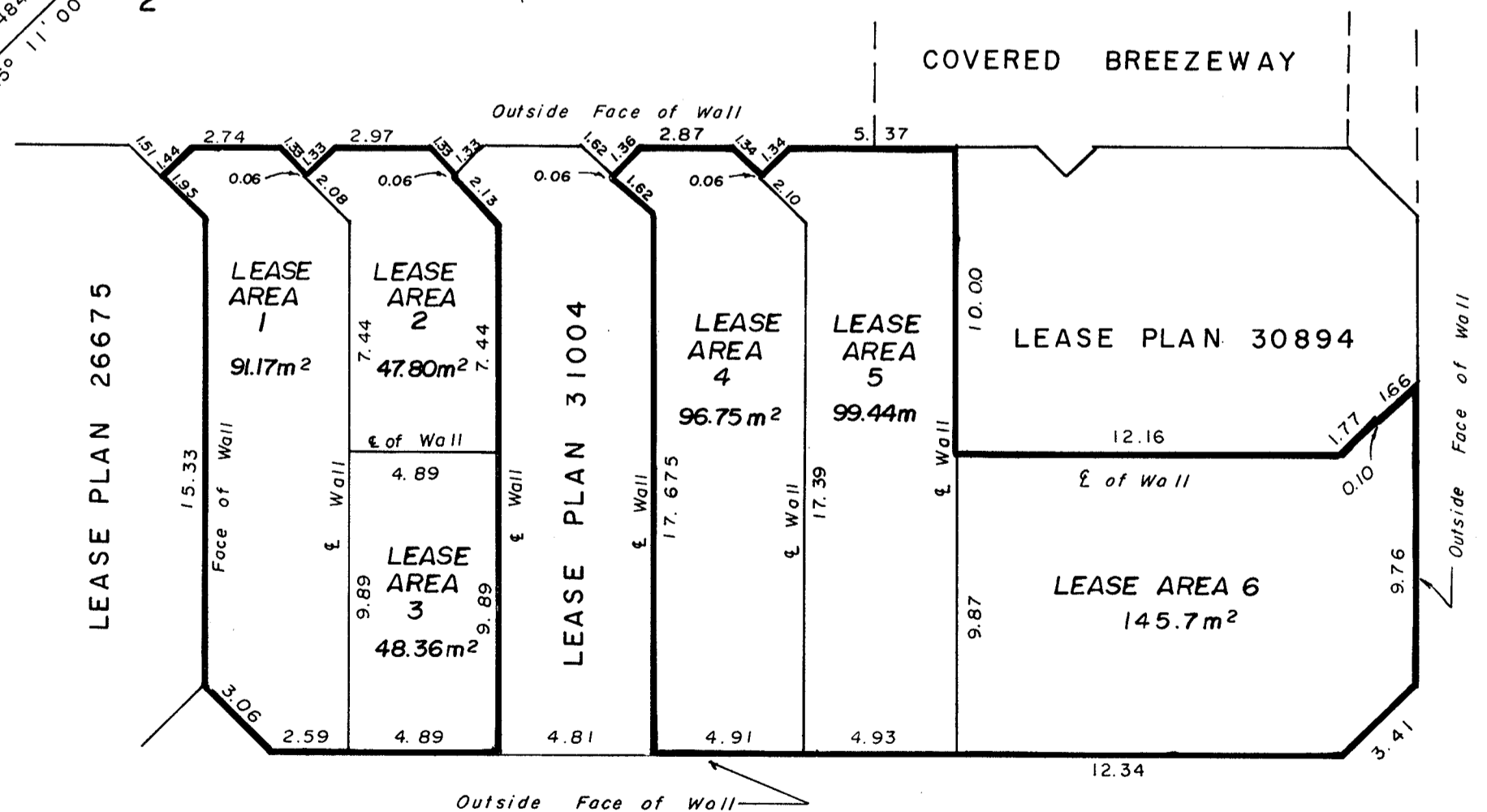
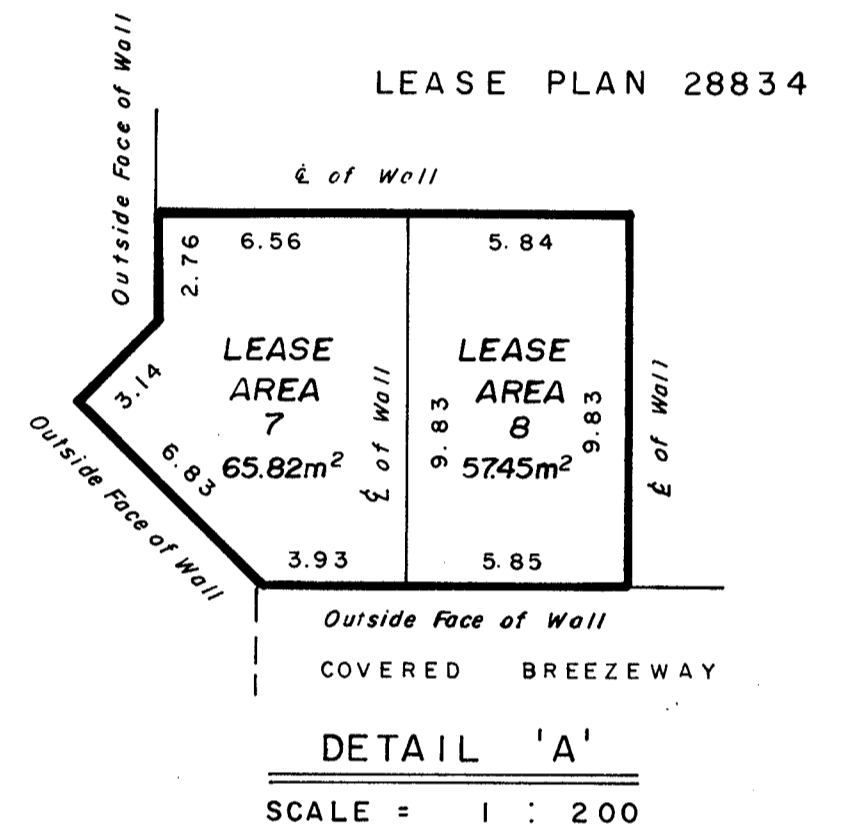
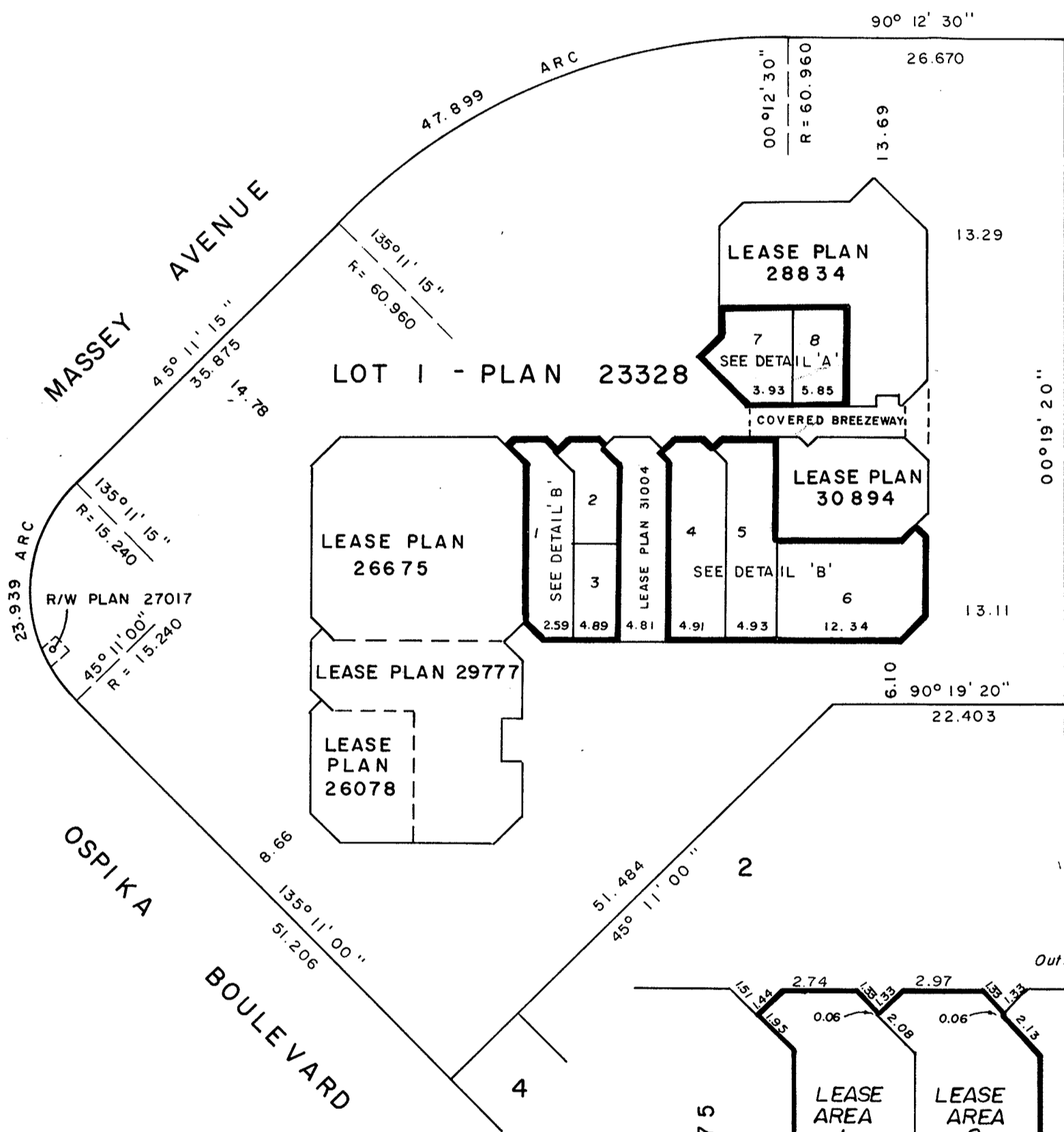
Bearings are astronomic, derived from Plan 23328.

PLAN Nº 31130

Deposited in the Land Title Office
at Prince George, B.C. this 20
day of Nov, 1985.

Registrar *W. B. Gandy*

D.L. 8171



CERTIFIED CORRECT
This 17 day October, 1985.

Gordon Kilbride
GORDON KILBRIDE, B.C.L.S.

This plan lies within the Fraser-Fort
George Regional District.

W.D. USHER & ASSOCIATES
LAND SURVEYORS
PRINCE GEORGE - B.C.