

REFERENCE  
 PLAN OF CONSOLIDATION OF  
 LOTS 17 TO 22 INCLUSIVE AND PARCEL A (D16481) OF LOTS 23 & 24  
 BLOCK 60, PLAN 752,  
 DISTRICT LOT 937, CARIBOO DISTRICT.

SCALE: 1:500 (Distances are in metres)



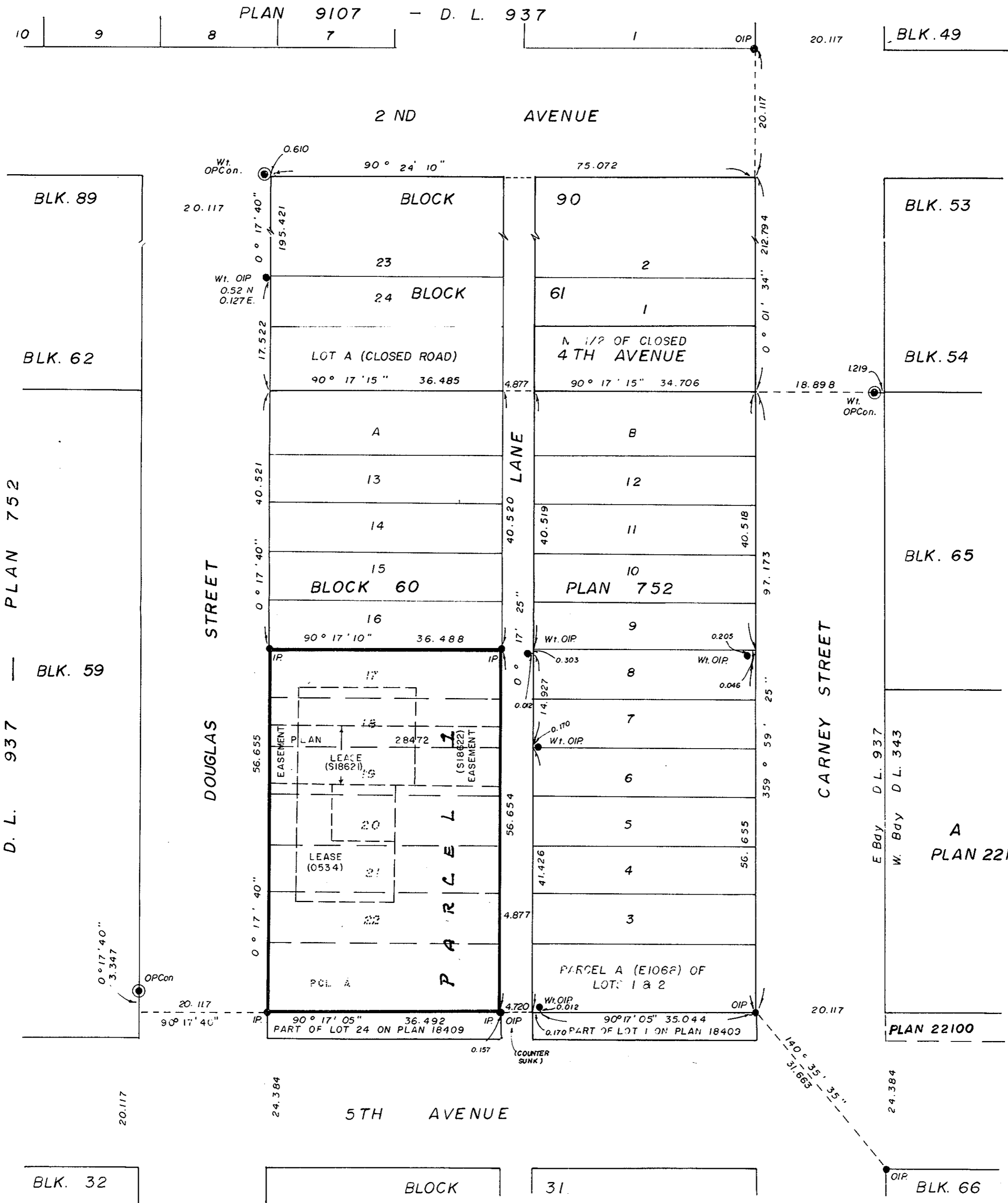
Bearings are astronomic derived from the East bdy. of Douglas Street  
 Plan 752 as shown on Plan 24385.

- IP..... standard iron post.
- IP Con..... standard post in concrete
- ..... denotes old.
- Wt..... denotes witness.

DOTTED 4M  
 31125

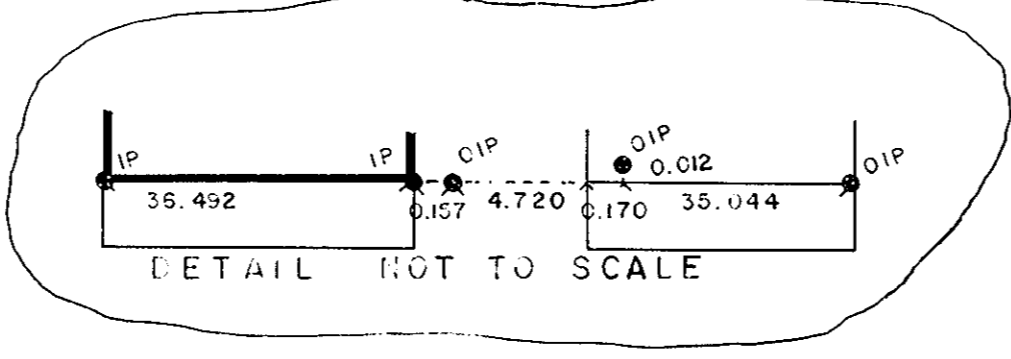
PLAN NO. \_\_\_\_\_  
 Deposited in the Land Title Office at  
 Prince George this 20 day of Nov.  
 1985.

W.G.  
 Registrar



I, Gordon Kilbride, a British Columbia Land Surveyor, of  
 Prince George in British Columbia certify that I was  
 present at and personally superintended the survey  
 represented by this plan, and that the survey and  
 plan are correct. The survey was completed on the  
 13 day of July 1985.

*Gordon Kilbride*  
 Gordon Kilbride, B.C.L.S.



357 HOLDINGS LTD.  
 PLAN 22100  
 Authorized signatory  
 Authorized signatory  
 Mortgagee  
 Witness  
 Name  
 Address  
 Occupation

W.D Usher & Associates  
 B.C. Land Surveyors,  
 Prince George — B.C.

This plan lies within the Fraser Fort George  
 Regional District.

File: 14809 PU 30