

HN

EXPLANATORY PLAN OF CONSOLIDATION OF  
REMAINDER OF LOT 8 PLAN 1338, AND PARCEL A,  
PLAN H-881,  
DISTRICT LOT 2440, CARIBOO DISTRICT.

SCALE: 1:1000 (DISTANCES ARE IN METRES)

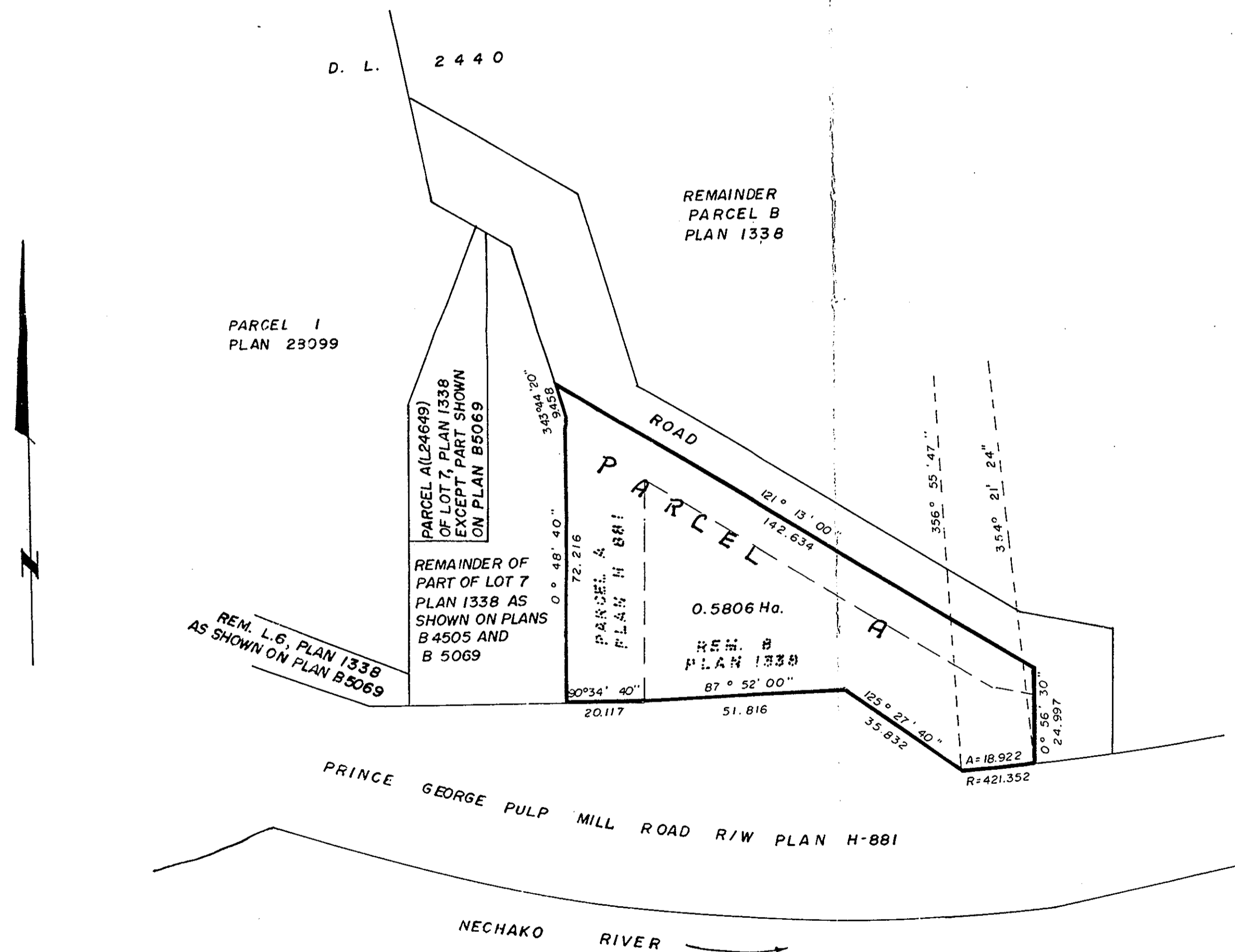


BEARINGS ARE ASTRONOMIC DERIVED FROM PLAN H-881.

PLAN NO. 31025

Deposited in the Land Title Office of  
Prince George this 18 day of Sept.  
1985.

W.G.  
Registrar.



CERTIFIED CORRECT  
this \_\_\_ day of September, 1985.

G. Kilbride, B.C.L.S.

This plan lies within the Fraser Fort George Regional District

W.D. Usher & Associates,  
B.C. Land Surveyors,  
Prince George - B.C.

File: 14903