

REFERENCE PLAN OF CONSOLIDATION  
OF LOTS 1 TO 6 AND LOTS 19 TO 24, BLOCK 202,  
PLAN 1268, AND CLOSED LANE, PLAN 30903,  
DISTRICT LOT 343,  
CARIBOO DISTRICT — BRITISH COLUMBIA.

SCALE: 1:1000 Distances are in metres.



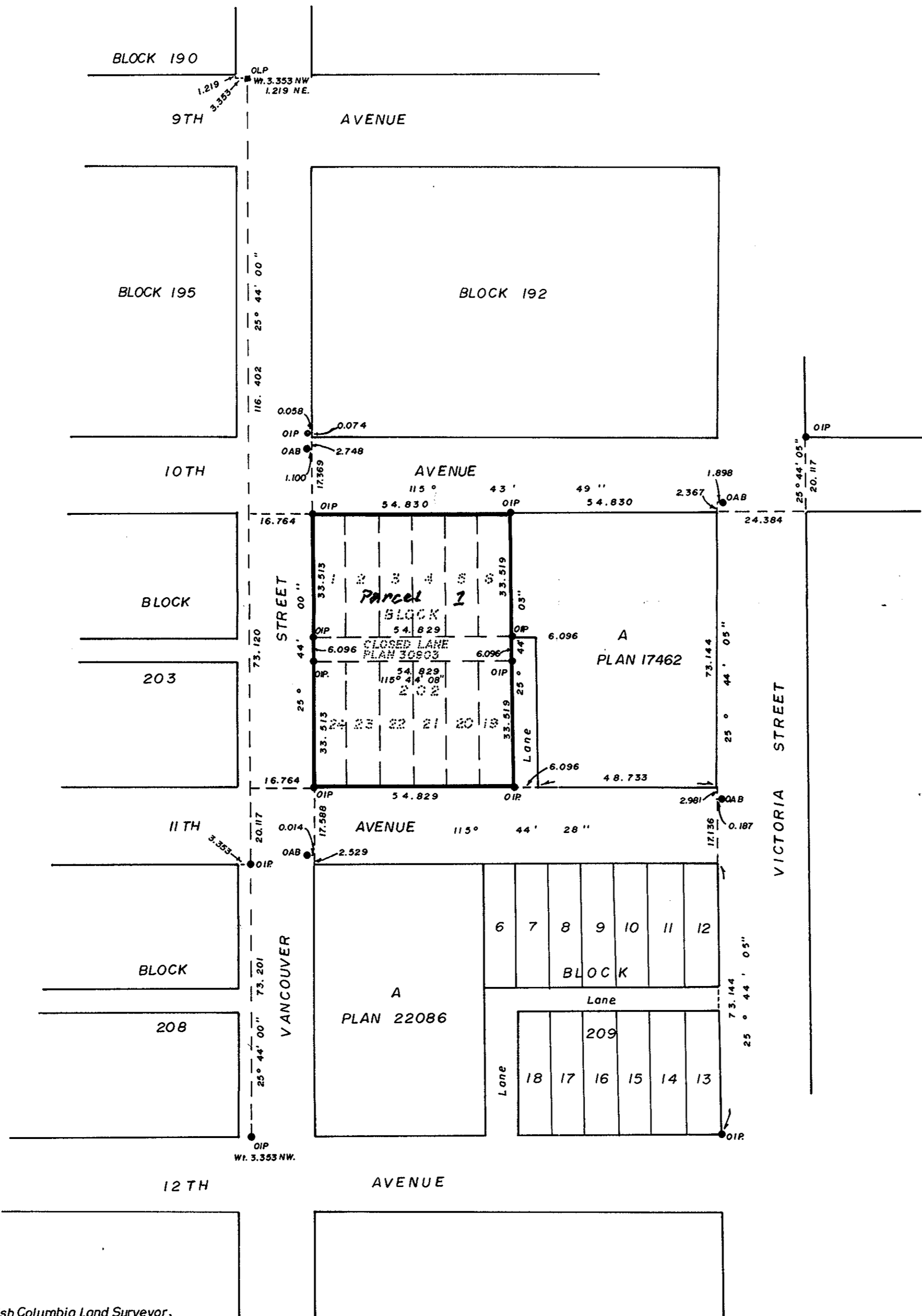
NOTE: Bearings are astronomic derived from the westerly boundary of Vancouver Street as show on Plan 22086.

- LEGEND:
- IP.....denotes an iron pin set.
  - OIP..... denotes an old iron pin found.
  - AB.....denotes an old aluminum bolt found.
  - OLP.....denotes an old lead plug found.

PLAN No 30982

Deposited in the Land Title Office  
at Prince George, B.C. this 23<sup>rd</sup>  
day of August 1985.

W. G. GANDY  
Registrar



I, GORDON KILBRIDE, a British Columbia Land Surveyor,  
of Prince George in British Columbia certify that  
I was present at and personally superintended the  
survey represented by this plan and that the survey  
and plan are correct. The survey was completed on  
the 4th day of April, 1985.

*Gordon Kilbride*  
Gordon Kilbride, B.C.L.S.

*[Signature]*  
Owner

AUTHORIZED SIGNATORIES

Approved under the Land Title Act  
this 15<sup>th</sup> day of AUG 1985

*[Signature]*  
Approving Officer - City of  
Prince George

This plan lies within the Fraser Fort George  
Regional District.

W. D. USHER & ASSOCIATES,  
LAND SURVEYORS  
PRINCE GEORGE — B.C.