

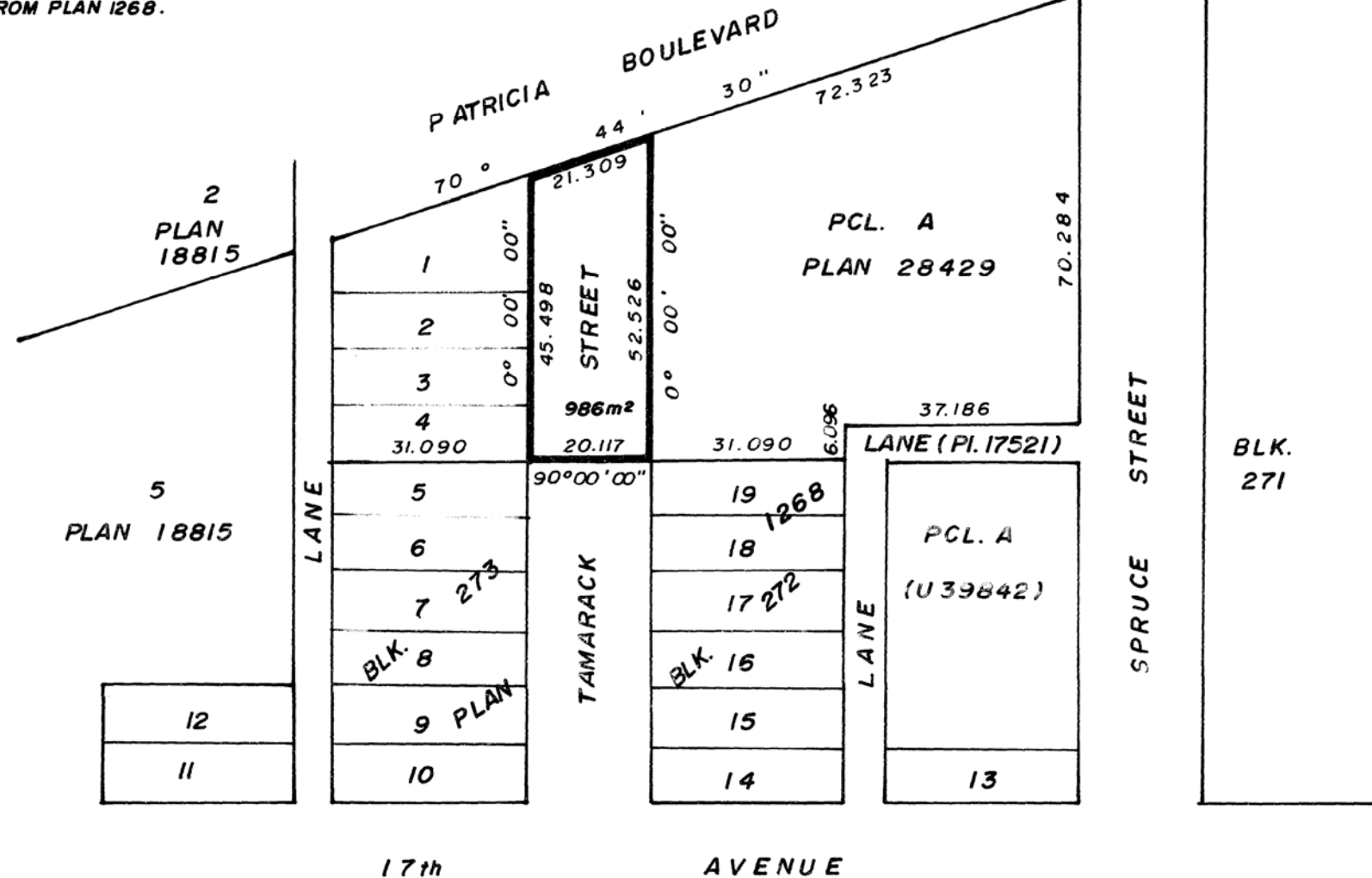
26-FF-226

**EXPLANATORY PLAN TO ACCOMPANY BY LAW 4599,
CITY OF PRINCE GEORGE
CLOSING PART OF TAMARACK STREET
ADJOINING LOTS 1, 2, 3 & 4, BLOCK 273, PLAN 1268,
AND PARCEL A PLAN 28429,
BOTH OF D.L. 343, CARIBOO DISTRICT.**

SCALE : 1 : 1000 (DISTANCES ARE IN METRES.)



BEARINGS ARE ASTRONOMIC DERIVED FROM PLAN 1268.



PLAN NO. 30942
DEPOSITED IN THE LAND TITLE OFFICE AT PRINCE GEORGE
THIS 21 DAY OF JULY 1985.

W. Kandy per *PK*
REGISTRAR

CERTIFIED CORRECT
this 20 day of February, 1985.

V. Bartell
V. Bartell, B.C.L.S.

This plan lies within the Fraser Fort George Regional District.

McWilliam, Whyte, Goble & Associates,
B.C. Land Surveyors,
Prince George - Kamloops - Smithers - Salmon Arm.
REF. NO. 85012